

GC Analysis for V7242101 DL-Glyceraldehyde

Experiment time: 2025-03-10, 17:26:00
Spectral data file: D:\GC\DL-Glyceraldehyde\20250310-5. org

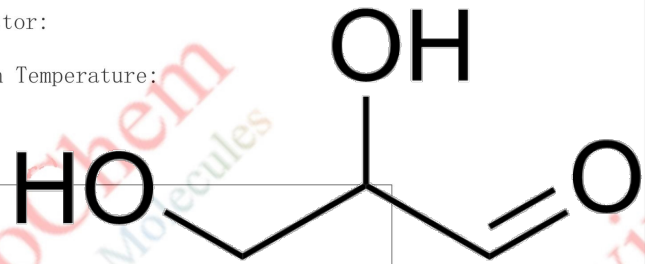
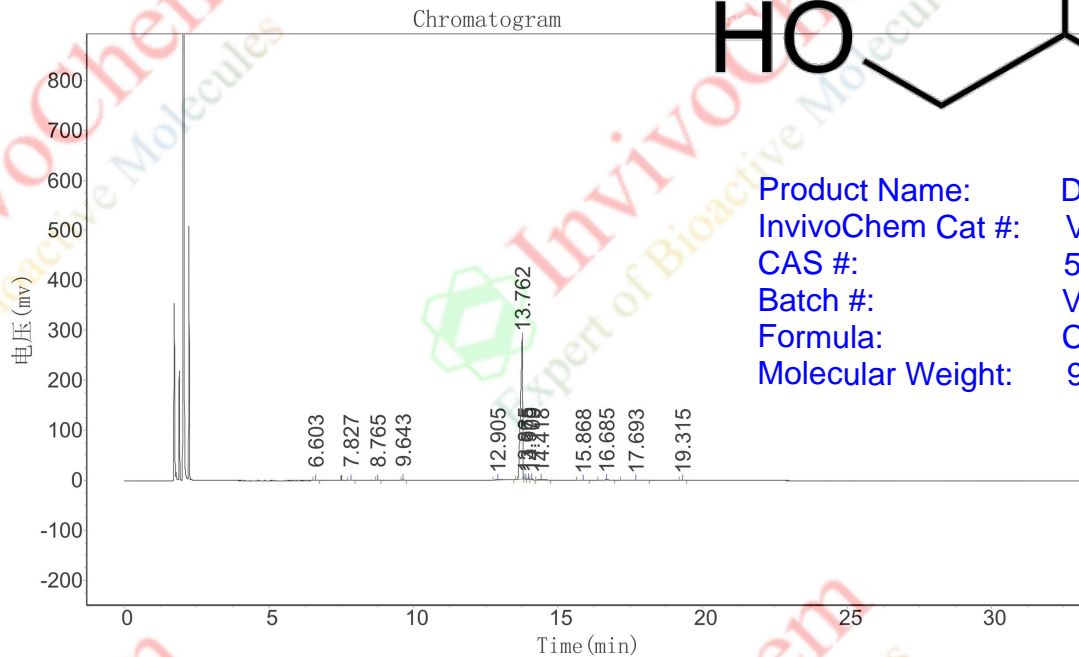
Experimenter:
Reporting time: 2025-03-10, 19:52:54
Integration method: Area Normalization Method

Type of instrument used: Gas Chromatography (GC)

Detector:

Injector:

Column Temperature:



Product Name: DL-Glyceraldehyde
InvivoChem Cat #: V72421
CAS #: 56-82-6
Batch #: V7242101
Formula: C3H6O3
Molecular Weight: 90.08

Analysis results table

Peak Number	Peak Name	Retention Time	Peak Height	Peak Area	Content
1		6.603	880.676	1275.700	0.0828
2		7.827	300.250	705.500	0.0458
3		8.765	648.430	2158.550	0.1401
4		9.643	1453.070	3824.900	0.2483
5		12.905	1536.766	29598.898	1.9213
6		13.762	282682.000	1443485.625	93.6964
7		13.865	1089.113	2956.801	0.1919
8		13.975	1691.683	4083.400	0.2651
9		14.100	1698.328	7020.801	0.4557
10		14.418	937.075	14564.149	0.9454
11		15.868	495.911	5924.900	0.3846
12		16.685	1064.968	9914.300	0.6435
13		17.693	420.883	10011.850	0.6499
14		19.315	776.784	5073.300	0.3293
Total			295675.937	1540598.672	100.0000