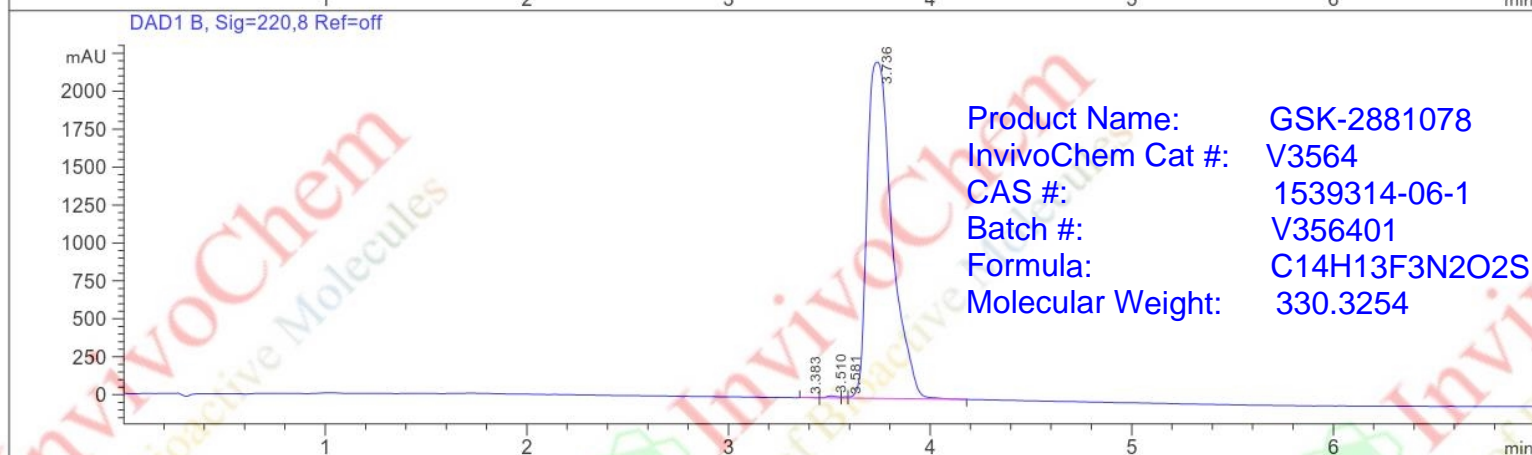
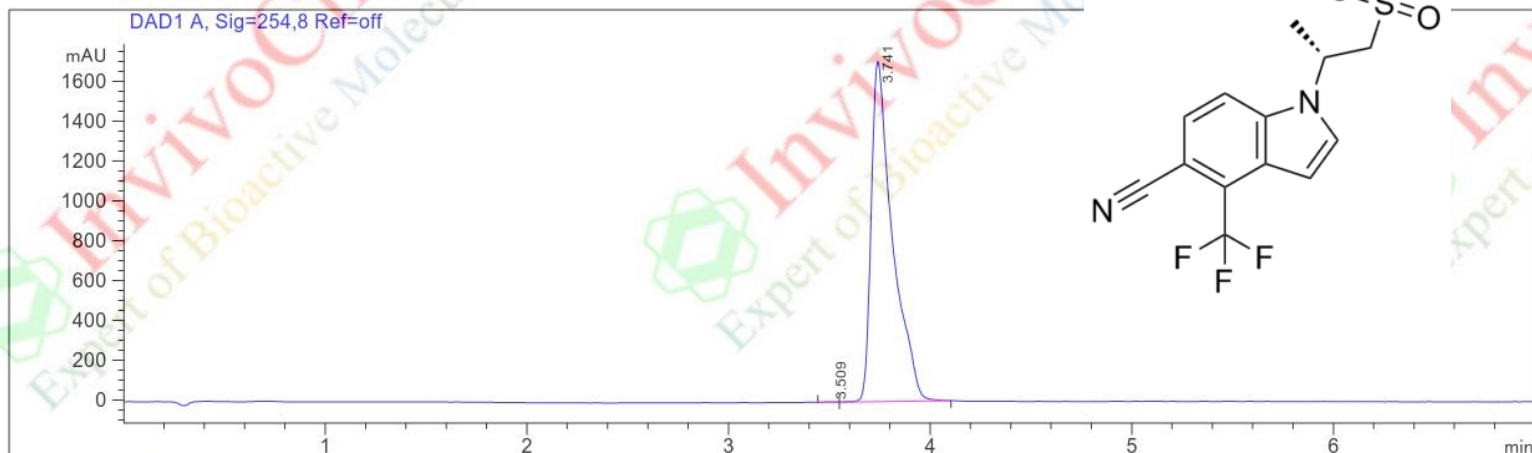


HPLC Analysis for V356401 GSK-2881078

LC/MS Report

File D:\CHEM32\DATA\202309\20230919-KEHU-1 2023-09-19 13-57-16\LW42-20230916-HPLC-20230919-HPLC.D
Injection Date : 19-Sep-22, 15:04:41 Tgt Mass (EZ) :
Sample Name : Location : P1-B-07
Acq. Operator : Inj : 1
Spec. Reported : MS Integration Inj Volume : 0.5 ul
Acq. Method : D:\CHEM32\DATA\202309\20230919-KEHU-1 2023-09-19 13-57-16\401-GP50-KEHU.M
Analysis Method : C:\Chem32\1\METHODS\401-GP50-KEHU.M
Sample Info :
Method Info : Instrument : Agilent 1200-6110 MS
Mobile Phase : A=0.1%TFA in water, B=Acetonitrile
Gradient : 5-95% B in 4 min, 95%B in isocratic for 3min
Flow Rate : 0.6 mL/min
Column : XDB-C18 2.1*50mm, 3.5um
Column temperature : 35°C



Integration Results for DAD1 A, Sig=254,8 Ref=off

RetTim	Width	Area	Height	Area%
3.51	0.05	7.98	2.37	0.06
3.74	0.10	12520.69	1708.10	99.94

Integration Results for DAD1 B, Sig=220,8 Ref=off

RetTim	Width	Area	Height	Area%
3.38	0.05	6.61	2.09	0.03
3.51	0.06	49.92	13.54	0.26
3.58	0.03	15.36	7.67	0.08
3.74	0.13	19074.79	2215.25	99.62