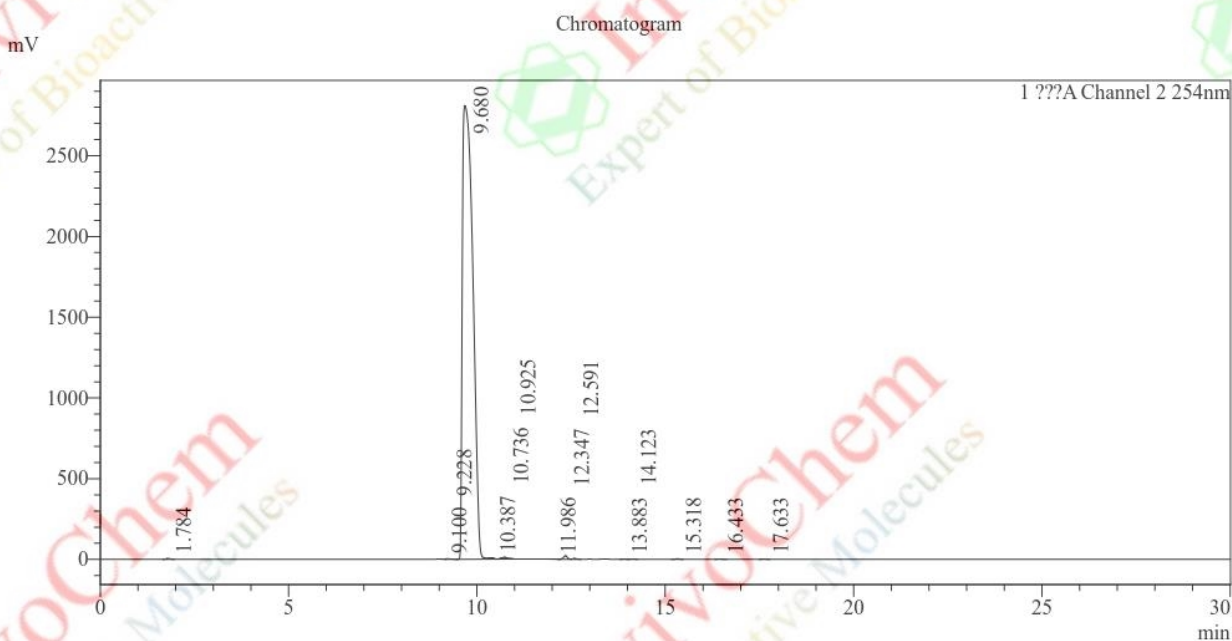
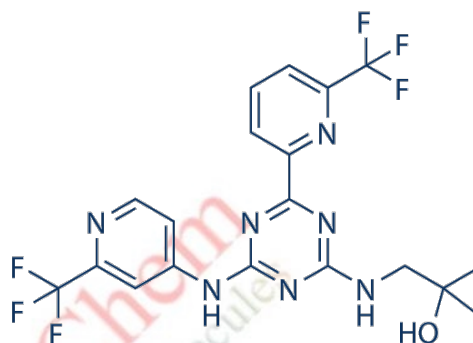


HPLC Analysis for V285101 Enasidenib (AG-221)

Acquired by : cix
Sample Name : 9
Sample ID : 9
Tray# : 1
Vial# : 94
Injection Volume : 20
Data File : 9.lcd
Method File : LJ-1.lem
Batch File : 24.09.24.lcb
Report Format File : DEFAULT.lsr
Date Acquired : 2024/9/24 16:34:57
Date Processed : 2024/9/24 17:04:58

Sample Information



Peak Table

Peak#	Ret. Time	Area	Height	Conc.	Area%
1	1.784	46963	6064	0.000	0.085
2	9.100	14446	1544	0.000	0.026
3	9.228	19822	2579	0.000	0.036
4	9.680	54879106	2808244	0.000	99.071
5	10.387	28525	5302	0.000	0.051
6	10.736	108489	10812	0.000	0.196
7	10.925	24247	3350	0.000	0.044
8	11.986	20524	1835	0.000	0.037
9	12.347	149612	21631	0.000	0.270
10	12.591	31632	4824	0.000	0.057
11	13.883	5885	743	0.000	0.011
12	14.123	10936	1696	0.000	0.020
13	15.318	22082	3241	0.000	0.040
14	16.433	15604	2423	0.000	0.028
15	17.633	15670	2533	0.000	0.028
Total		55393543	2876820		100.000

Product Name: Enasidenib (AG-221)
InvivoChem Cat #: V2851
CAS #: 1446502-11-9
Batch #: V285101
Formula: C₁₉H₁₇F₆N₇O
Molecular Weight: 473.38