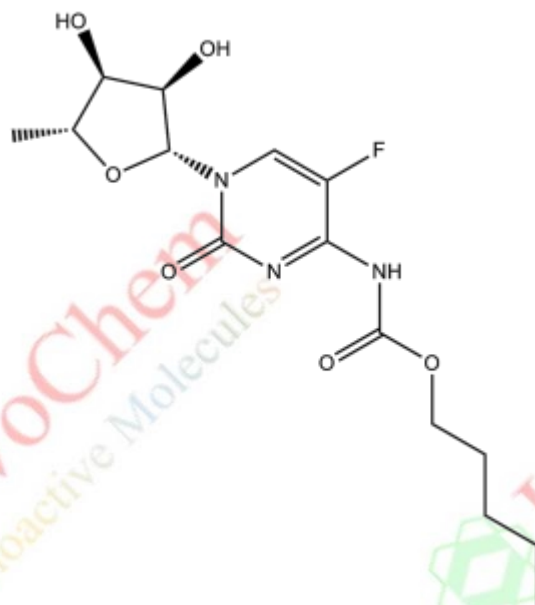


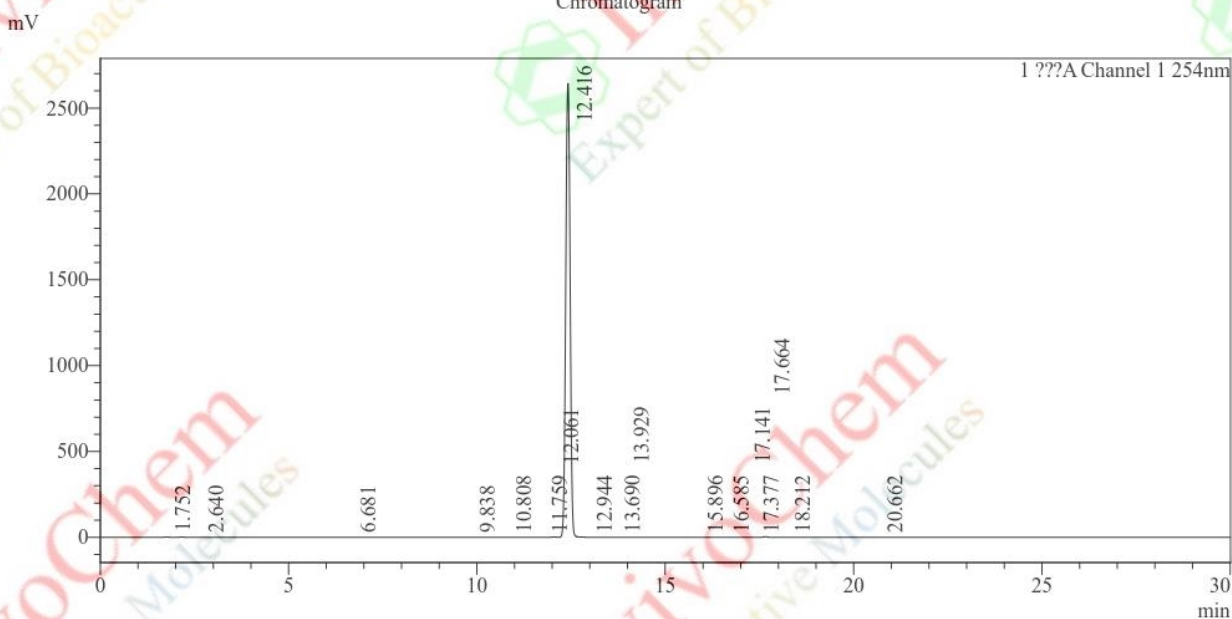
# HPLC Analysis for V145401 Capecitabine (Xeloda)



## Sample Information

Acquired by : cix  
 Sample Name : 154  
 Sample ID : 154  
 Tray# : 1  
 Vial# : 79  
 Injection Volume : 20  
 Data File : 154361-50-9.lcd  
 Method File : LJ-1.lcm  
 Batch File : 24.10.30.lcb  
 Report Format File : DEFAULT.lsr  
 Date Acquired : 2024/11/29 12:37:46  
 Date Processed : 2024/11/29 16:35:12

## Chromatogram



## Peak Table

Peak#	Ret. Time	Area	Height	Conc.	Area%
1	1.752	19877	2195	0.000	0.092
2	2.640	12647	546	0.000	0.058
3	6.681	5352	353	0.000	0.025
4	9.838	1855	177	0.000	0.009
5	10.808	3335	263	0.000	0.015
6	11.759	1545	161	0.000	0.007
7	12.061	10785	1392	0.000	0.050
8	12.416	21540316	2641265	0.000	99.460
9	12.944	1074	195	0.000	0.005
10	13.690	6840	748	0.000	0.032
11	13.929	4209	537	0.000	0.019
12	15.896	2040	262	0.000	0.009
13	16.585	2456	244	0.000	0.011
14	17.141	1440	178	0.000	0.007
15	17.377	2091	228	0.000	0.010
16	17.664	29125	3945	0.000	0.134
17	18.212	1422	94	0.000	0.007
18	20.662	10790	491	0.000	0.050
Total		21657200	2653273		100.000

Product Name: Capecitabine (Xeloda)  
 InvivoChem Cat #: V1454  
 CAS #: 154361-50-9  
 Batch #: V145401  
 Formula: C<sub>15</sub>H<sub>22</sub>FN<sub>3</sub>O<sub>6</sub>  
 Molecular Weight: 359.35