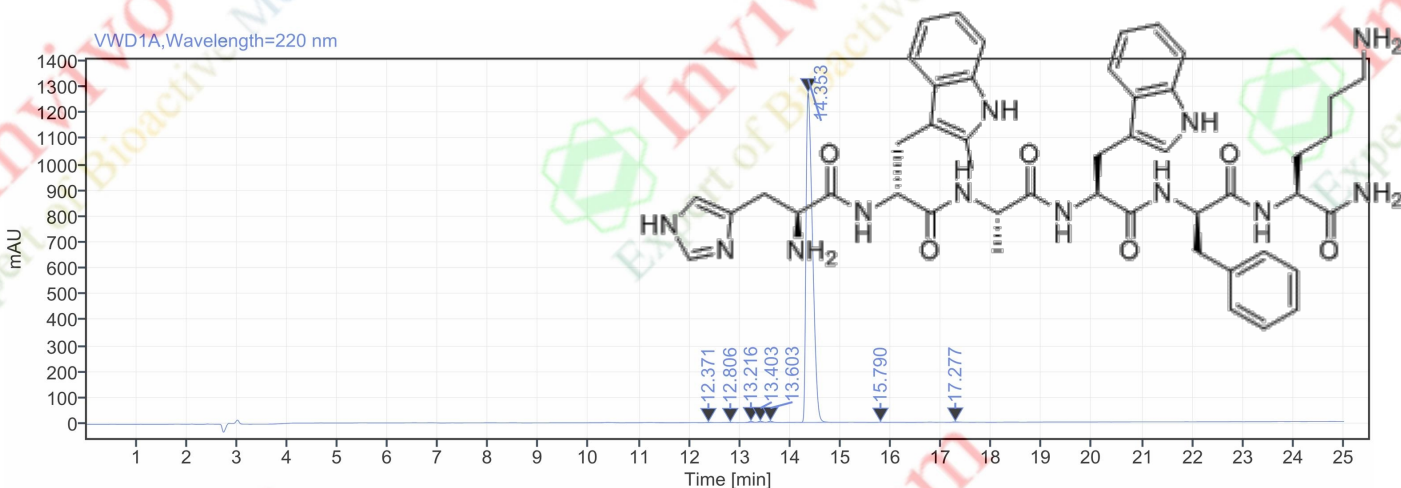


Single Injection Report



Data file: 2024-12-11 11-27-30+08-00-04.dx
Sequence Name: 20241211-1 **Project Name:** A
Sample name: DZT-020 1.15MG/ML **Operator:** System
Instrument: Agilent1260 **Injection date:** 2024-12-11 11:28:14+08:00
Inj. volume: 3.000 **Location:** P1-A1
Acq. method: 20-45.amx **Type:** Sample
Processing method: GC_LC_DefaultMethod.pmx **Sample amount:** 0.00
Manually modified: Manual Integration



Signal: VWD1A, Wavelength=220 nm

RT [min]	Type	Width [min]	Area	Height	Area%	Name
12.371	MM m	0.24	6.05	0.84	0.05	
12.806	MM m	0.18	3.00	0.58	0.03	
13.216	MM m	0.20	21.35	3.90	0.18	
13.403	MM m	0.20	22.23	4.08	0.19	
13.603	MM m	0.18	21.89	4.06	0.19	
14.353	MM m	0.61	11499.71	1272.44	99.20	
15.790	MM m	0.20	5.13	0.86	0.04	
17.277	MM m	0.31	12.55	1.71	0.11	
Sum			11591.92			

Product Name: Examorelin
InvivoChem Cat #: V6627
CAS #: 140703-51-1
Batch #: V662701
Formula: C47H58N12O6
Molecular Weight: 887.04