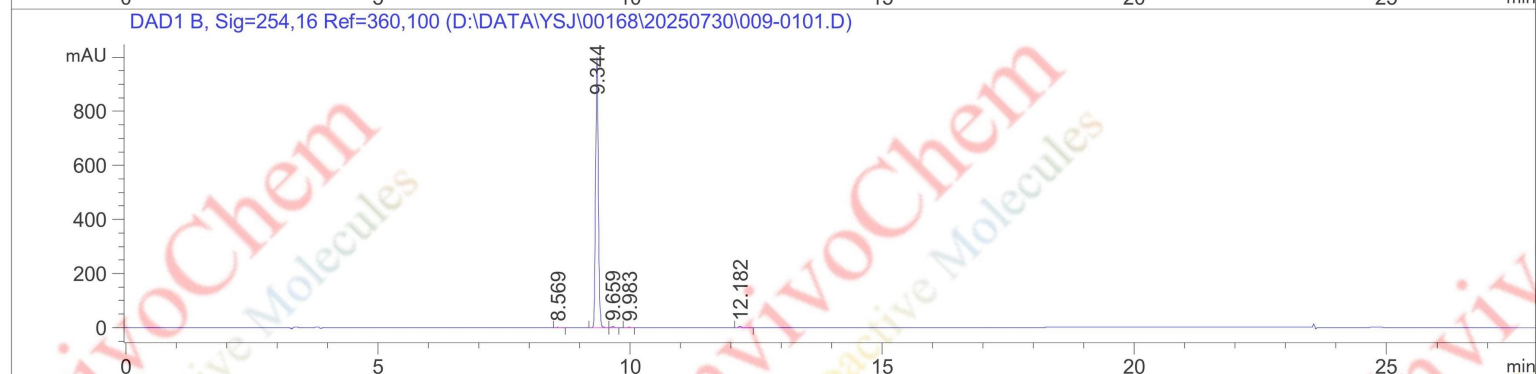
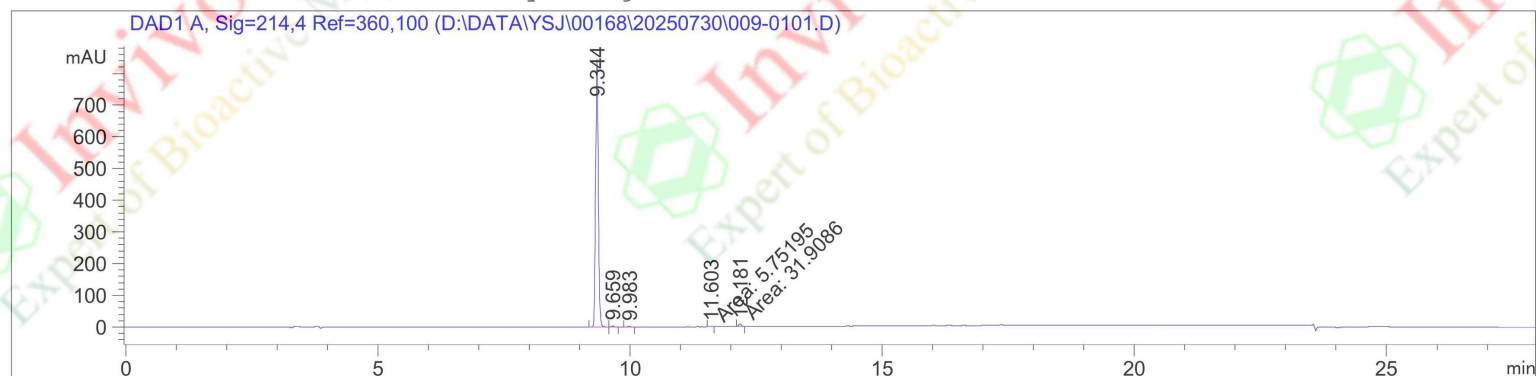


# HPLC Analysis for V155901 R547 (Ro 4584820)

Data File D:\DATA\YSJ\00168\20250730\009-0101.D

Sample Name: YSJ-00168-TM-5

=====  
Acq. Operator : Seq. Line : 1  
Acq. Instrument : Instrument 1 Location : Vial 9  
Injection Date : 7/30/2025 5:10:07 PM Inj : 1  
Inj Volume : 1.0 µl  
Different Inj Volume from Sequence ! Actual Inj Volume : 2.0 µl  
Acq. Method : D:\1\1\DATA\0730 2025-07-30 17-09-10\10-95-20MIN-TEST.M  
Last changed : 6/16/2025 10:00:05 AM  
Analysis Method : D:\1\1\DATA\20250721\0721 2025-07-21 08-54-58\001-0102.D\DA.M (5-95-20MIN-TEST.M)  
Last changed : 7/30/2025 4:33:14 PM  
(modified after loading)  
Additional Info : Peak(s) manually integrated



## Area Percent Report

Sorted By : Signal  
Multiplier: : 1.0000  
Dilution: : 1.0000  
Use Multiplier & Dilution Factor with ISTDs

Signal 1: DAD1 A, Sig=214,4 Ref=360,100

Peak #	RetTime [min]	Type	Width [min]	Area [mAU*s]	Height [mAU]	Area %
1	9.344	BV	0.0603	3218.35669	848.43683	98.0960
2	9.659	VB	0.0655	15.04932	3.54669	0.4587

Instrument 1 7/31/2025 9:13:22 AM

Page 1 of 2

Sample Name: YSJ-00168-TM-5

Peak #	RetTime [min]	Type	Width [min]	Area [mAU*s]	Height [mAU]	Area %
3	9.983	BB	0.0592	9.75857	2.51655	0.2974
4	11.603	MM	0.0648	5.75195	1.47902	0.1753
5	12.181	MM	0.0635	31.90857	8.37808	0.9726

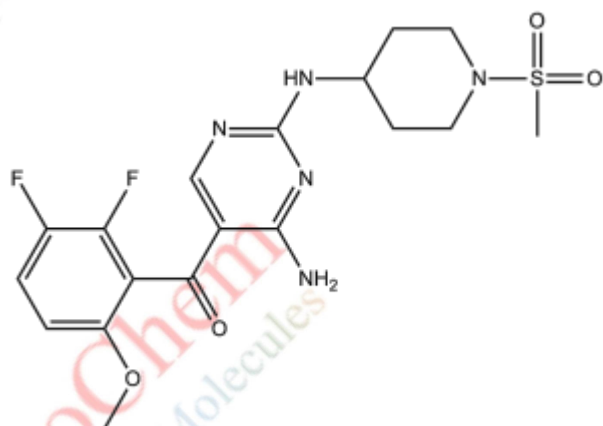
Totals : 3280.82510 864.35717

Signal 2: DAD1 B, Sig=254,16 Ref=360,100

Peak #	RetTime [min]	Type	Width [min]	Area [mAU*s]	Height [mAU]	Area %
1	8.569	BB	0.0551	7.22179	2.05009	0.1867
2	9.344	BV	0.0603	3810.62476	1004.01190	98.5284
3	9.659	VB	0.0643	17.58644	4.24969	0.4547
4	9.983	BB	0.0591	9.57354	2.47689	0.2475
5	12.182	BB	0.0638	22.53366	5.28422	0.5826

Totals : 3867.54018 1018.07280

\*\*\* End of Report \*\*\*



Product Name: R547 (Ro 4584820)  
InvivoChem Cat #: V1559  
CAS #: 741713-40-6  
Batch #: V155901  
Formula: C18H21F2N5O4S  
Molecular Weight: 441.45