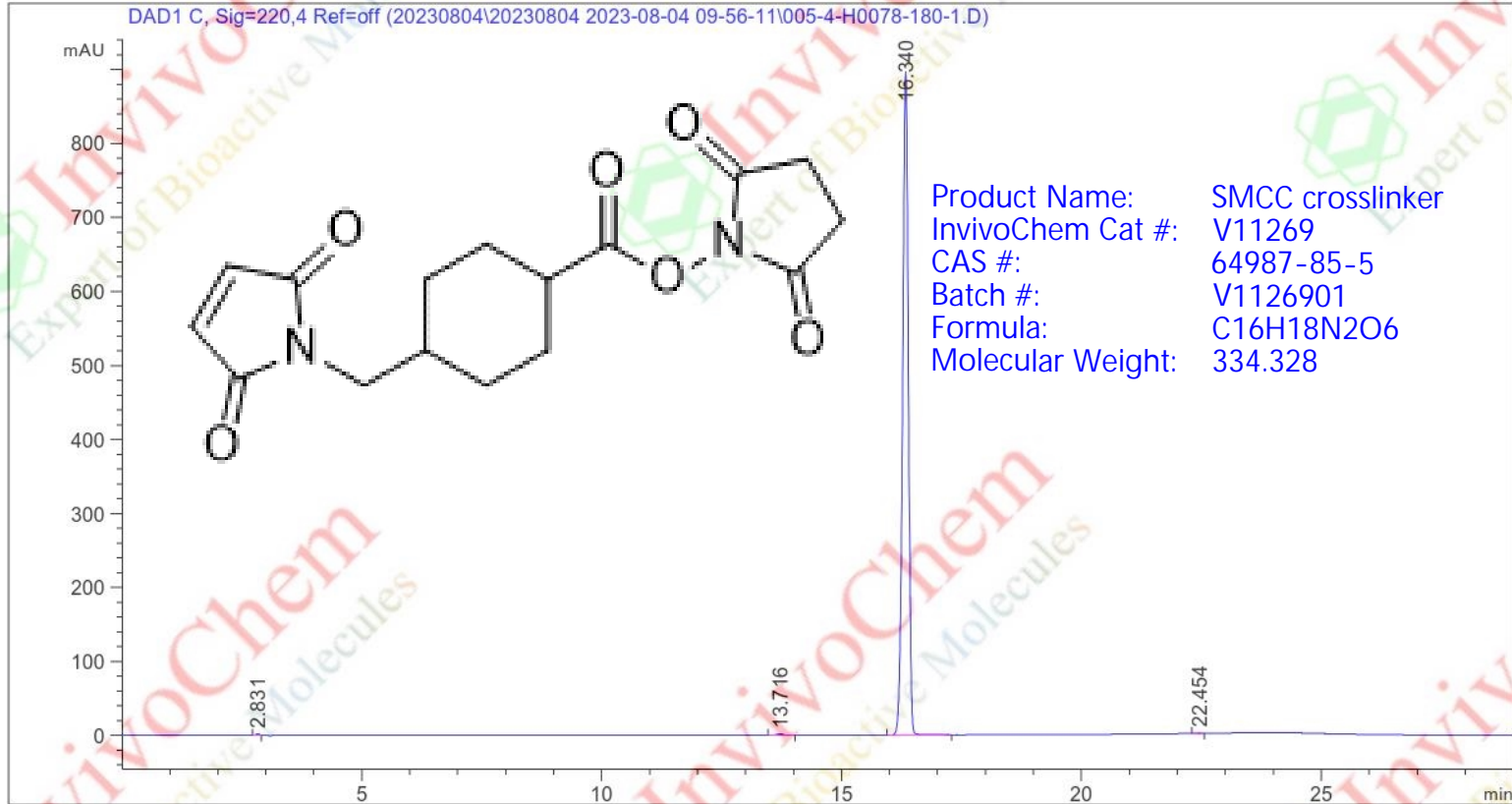


HPLC Analysis for V1126901 SMCC crosslinker

Conductor : System Column# : 5
 Instruments : HPLC Position : 4
 Sample date : 2023/8/4 11:59:39 Sample volume : 5.000 µl

Sample Method : D:\Users\Public\Documents\ChemStation\1\Data\20230804\20230804_2023-08-04_09-56-11\LC-25(SMCC)

.M
 1st Edit time : 2023/7/24 12:57:59 : system
 Analysis method : D:\Users\Public\Documents\ChemStation\1\Data\20230804\20230804_2023-08-04_09-56-11\LC-25(SMCC)
 .M (sequence method)
 2nd Edit time : 2023/8/4 11:28:28 : system



Area% Report

Sequencing : Signal
 Product factor : 1.0000
 Dilution factor : 1.0000
 Using product and dilution factors for internal standards

Signal 1: DAD1 C, Sig=220,4 Ref=off

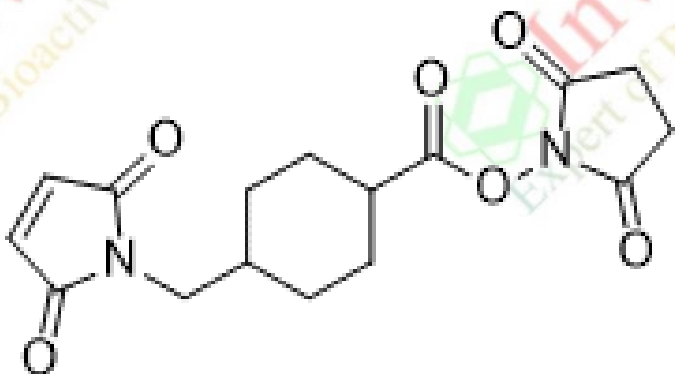
Peak #	R Time [min]	Style	P Width [min]	P Area [mAU*s]	P Height [mAU]	P Area %
1	2.831	BB	0.0707	9.19061	2.03325	0.1228
2	13.716	BB	0.1345	16.27617	1.85307	0.2174
3	16.340	BB	0.1290	7458.43848	897.41833	99.6157

Sample name: H0078-180-1

HPLC Analysis for V1126901 SMCC crosslinker

Peak #	RTime [min]	Style	P Width [min]	P Area [mAU*s]	P Height [mAU]	P Area %
4	22.454	BB	0.0962	3.30397	5.33901e-1	0.0441

Total: 7487.20922 901.83855



Product Name: SMCC crosslinker
InvivoChem Cat #: V11269
CAS #: 64987-85-5
Batch #: V1126901
Formula: C₁₆H₁₈N₂O₆
Molecular Weight: 334.328