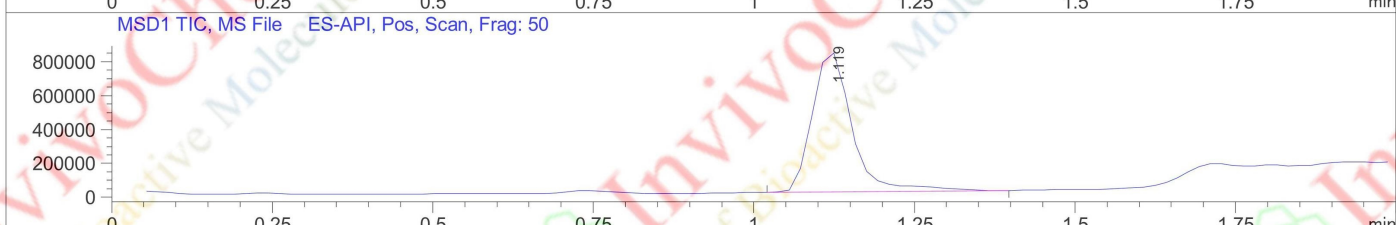
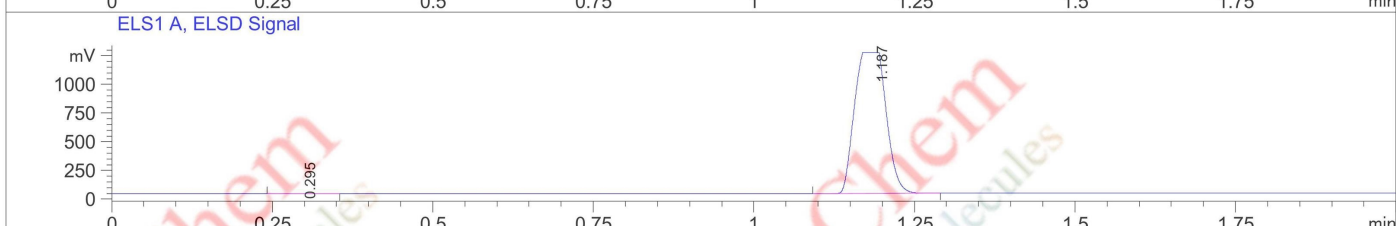
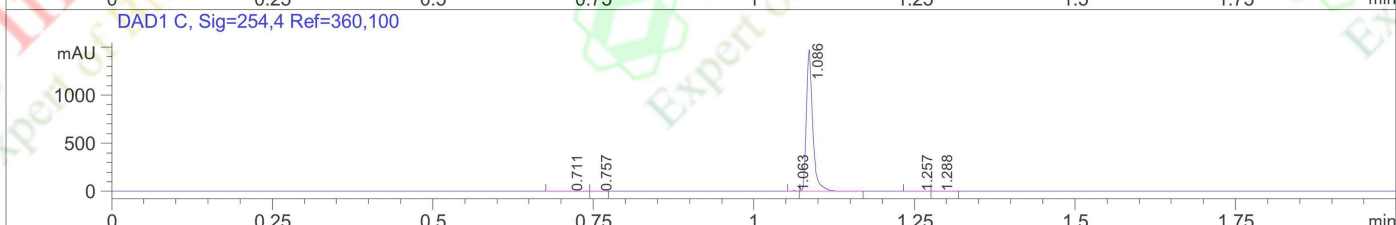
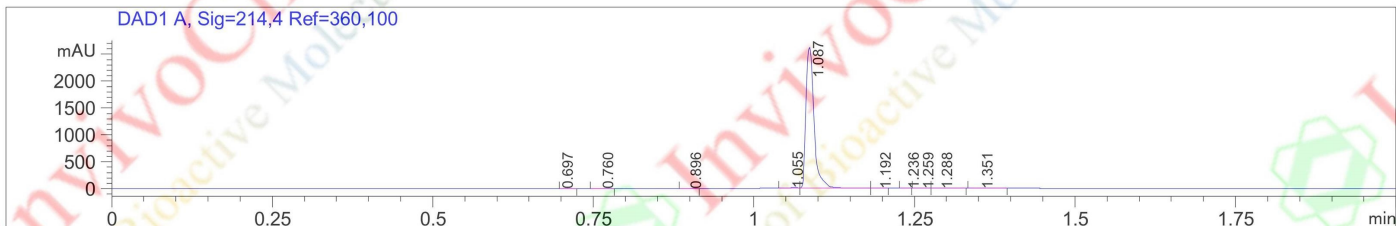


HPLC Analysis for V7322701 MMP13-IN-2

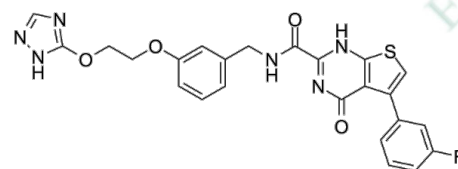
LC/MS Report

File E:\ChemStation\1\DATA\2025\SW-07\2025-07-10\CPK2025-0710-213309-UPLC-MS-10-069118.D
Injection Date : 10-Jul-25, 16:05:05 **Tgt Mass (EZX)** :
Sample Name : CPK2025-0710-213309 **Location** : P2-A-06
Acq. Operator : LiZhuping **Inj** : 1
Spec. Reported : MS Integration **Inj Volume** : 0.8 ul
Acq. Method : E:\ChemStation\1\Methods\1-POS-UPLC2.0MIN(0.8)(150-1000).M
Analysis Method : E:\CHEMSTATION\1\METHODS\1-POS-UPLC2.0MIN(0.8)(0-2000).M
CAS NO. : 935759-55-0
Method Info : **Mobile Phase**: A: water(0.01%TFA) B:ACN(0.01%TFA)
Gradient: 5% to 95%B within 1.3 min
Flow Rate :0.8ml/min
Column :Agilent Poroshell EC-C18-120, 2.1*50mm,1.9um
Oven Temperature : 45C



Integration Results for DAD1 A, Sig=214,4 Ref=360,100

RetTim	Width	Area	Height	Area%
0.70	0.01	1.74	0.16	0.08
0.76	0.01	1.57	2.04	0.07
0.90	0.01	0.41	0.56	0.02
1.06	0.01	12.03	16.58	0.52
1.09	0.01	2303.03	2690.13	99.13
1.19	0.01	0.61	0.99	0.03
1.24	0.01	0.32	0.54	0.01
1.26	0.02	1.00	1.06	0.04
1.29	0.01	1.19	1.59	0.05
1.35	0.02	1.22	0.83	0.05



Integration Results for DAD1 C, Sig=254,4 Ref=360,100

RetTim	Width	Area	Height	Area%
0.71	0.01	1.76	1.79	0.17
0.76	0.01	0.13	0.19	0.01
1.06	0.01	1.91	3.22	0.19
1.09	0.01	1008.33	1462.13	99.55

Product Name: MMP13-IN-2
InvivoChem Cat #: V73227
CAS #: 935759-55-0
Batch #: V7322701
Formula: C₂₄H₁₉FN₆O₄S
Molecular Weight: 506.51

1.26	0.02	0.37	0.37	0.04
1.29	0.01	0.37	0.55	0.04

Integration Results for ELS1 A, ELSD Signal

RetTim	Width	Area	Height	Area%
0.30	0.08	2.14	0.42	0.05
1.19	0.05	4181.88	1230.33	99.95

Integration Results for MSD1 TIC, MS File

RetTim	Width	Area	Height	Area%
1.12	0.07	3563345.25	834542.69	100.00