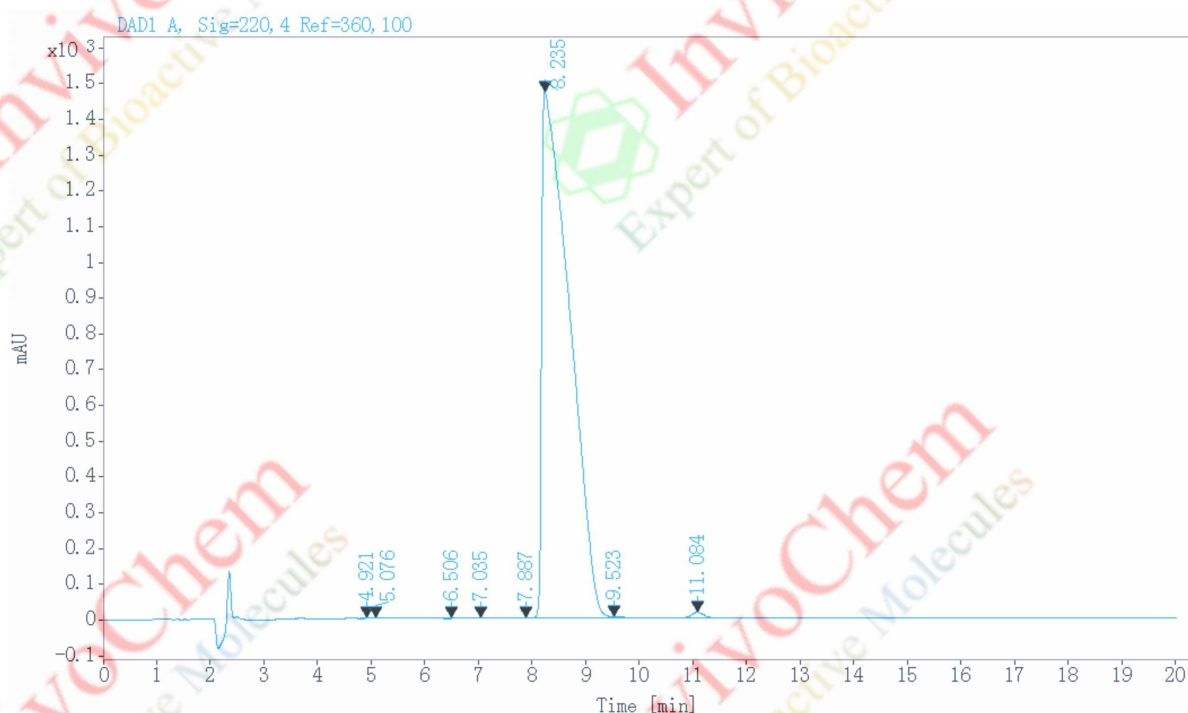


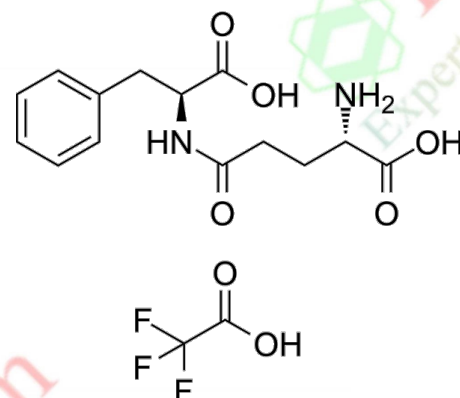
# HPLC Analysis for V7244101 $\gamma$ -Glu-Phe TFA

Data file: C:\CHEM32\1\DATA\260305\20260305 2026-03-05 10-21-58\602630  
26030502Final.D  
Sample name: 602630 26030502Final  
Description: Mobile Phase: Buffer A: 0.1% TFA in H<sub>2</sub>O  
Buffer B: 0.1% TFA in ACN  
Gradient: 12-22%B in 20min, Flow rate: 1.0ml/min  
Column: APUSIL EF-C18M, 4.6\*150mm, 5um 120A (QC-004)  
Instrument: Agilent HPLC 1100  
Instrument: 1100 Location: 63  
Injection date: 2026/3/5 11:20:40 Injection: 1 of 1  
Last changed: 2026/3/5 12:10:07 Injection volume: 10.000  
Acq. operator: 系统



Signal: DAD1 A, Sig=220, 4 Ref=360, 100

RT [min]	Type	Width [min]	Area	Height	Area%	Name
4.921	BV	0.0986	14.9452	2.2769	0.0283	
5.076	VB	0.0972	10.9676	1.7970	0.0208	
6.506	BB	0.1227	14.6487	1.8442	0.0277	
7.035	BB	0.1323	13.9543	1.4003	0.0264	
7.887	MF	0.1569	10.4712	1.1123	0.0198	
8.235	MF	0.5936	52427.6094	1472.0133	99.2454	
9.523	FM	0.4043	82.1903	3.3885	0.1556	
11.084	BB	0.2383	251.4581	15.5793	0.4760	
	Sum		52826.2447			



Product Name:  $\gamma$ -Glu-Phe TFA  
InvivoChem Cat #: V72441  
CAS #: 2828432-42-2  
Batch #: V7244101  
Formula: C<sub>16</sub>H<sub>19</sub>F<sub>3</sub>N<sub>2</sub>O<sub>7</sub>  
Molecular Weight: 408.33