

Sample Name: Y2203-0.5

=====

Acq. Operator : SYSTEM
 Sample Operator : SYSTEM
 Acq. Instrument : 1260 Location : P1-F-01
 Injection Date : 7/7/2023 17:02:06

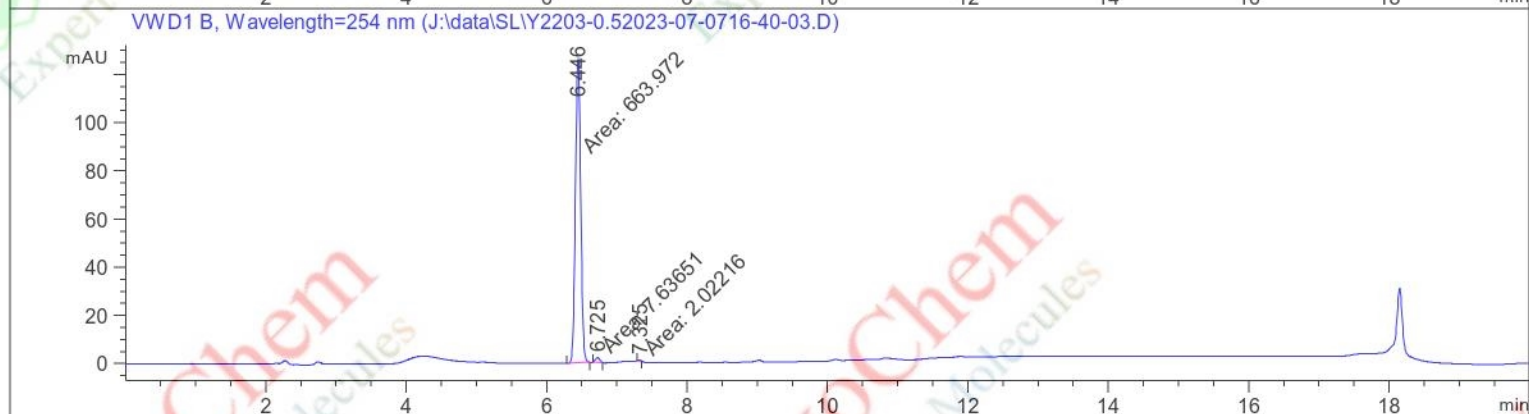
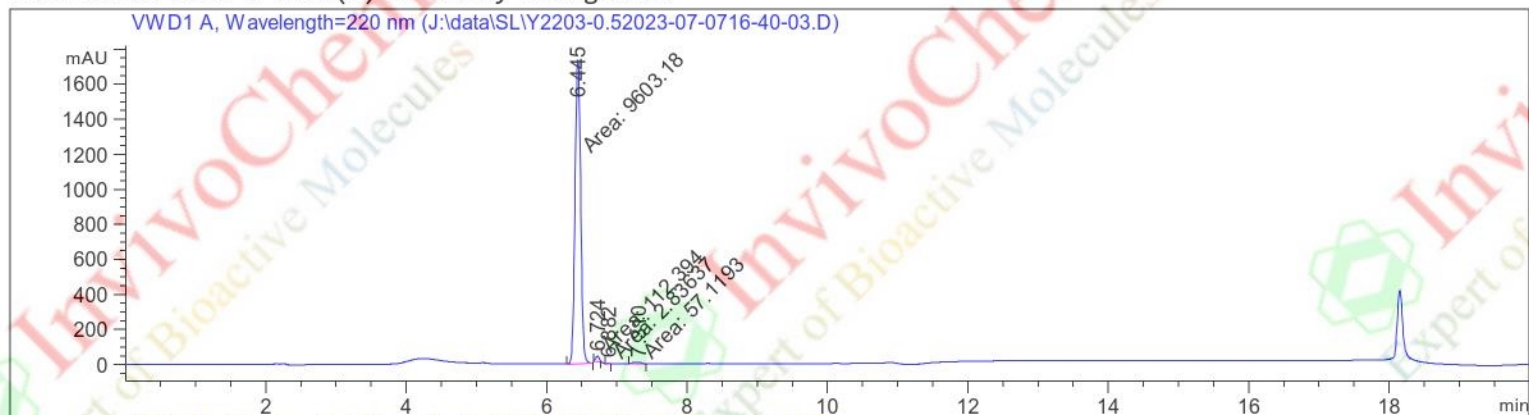
Inj Volume : 1.000 µl

Different Inj Volume from Sample Entry! Actual Inj Volume : 5.000 µl

Method : C:\Chem32\1\Methods\Analytical-220-254nm.M

Last changed : 3/3/2023 10:15:48 by SYSTEM

Additional Info : Peak(s) manually integrated



=====

Area Percent Report

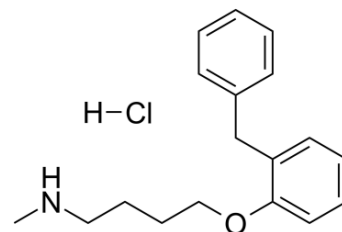
=====

Sorted By : Signal
 Multiplier : 1.0000
 Dilution : 1.0000
 Sample Amount : 1.00000 [ng/ul] (not used in calc.)
 Use Multiplier & Dilution Factor with ISTDs

Signal 1: VWD1 A, Wavelength=220 nm

| Peak # | RetTime [min] | Type | Width [min] | Area [mAU*s] | Height [mAU] | Area % |
|--------|---------------|------|-------------|--------------|--------------|---------|
| 1 | 6.445 | MM | 0.0920 | 9603.17676 | 1739.32166 | 98.2369 |
| 2 | 6.724 | MM | 0.0627 | 112.39366 | 29.85339 | 1.1497 |
| 3 | 6.882 | MM | 0.0570 | 2.83637 | 8.28884e-1 | 0.0290 |
| 4 | 7.310 | MM | 0.1402 | 57.11929 | 6.79192 | 0.5843 |

Totals : 9775.52607 1776.79584



Product Name: Bifemelane HCl
 InvivoChem Cat #: V5896
 CAS #: 62232-46-6
 Batch #: V589602
 Formula: C18H24ClNO
 Molecular Weight: 305.846

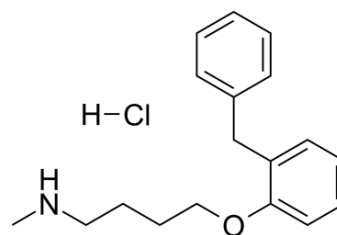
Sample Name: Y2203-0.5

Signal 2: VWD1 B, Wavelength=254 nm

| Peak # | RetTime [min] | Type | Width [min] | Area [mAU*s] | Height [mAU] | Area % |
|--------|---------------|------|-------------|--------------|--------------|---------|
| 1 | 6.446 | MM | 0.0879 | 663.97223 | 125.86295 | 98.5662 |
| 2 | 6.725 | MM | 0.0697 | 7.63651 | 1.82594 | 1.1336 |
| 3 | 7.325 | MM | 0.0528 | 2.02216 | 6.37941e-1 | 0.3002 |

Totals : 673.63090 128.32682

*** End of Report ***



Product Name: Bifemelane HCl
InvivoChem Cat #: V5896
CAS #: 62232-46-6
Batch #: V589602
Formula: C18H24ClNO
Molecular Weight: 305.846