

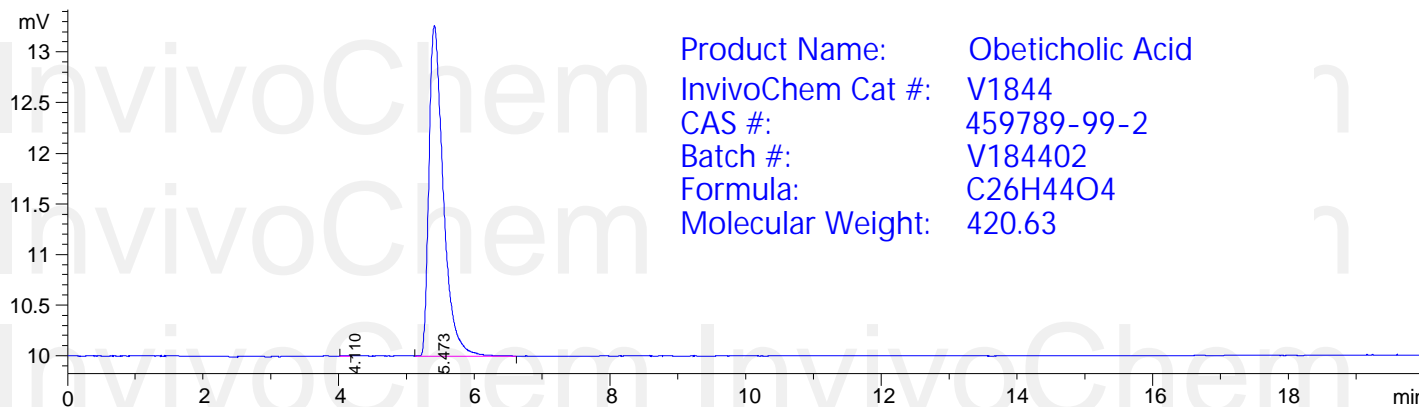
# HPLC Analysis for Obeticholic-Acid



Injection Date : 25-May-18, 10:46:53  
Sample Name : 115129  
Acq. Operator : 1  
Spec. Reported : Integration  
Method Info :  
Column: Agilent C18, 100mm\*4.6mm, 3.0um  
Temperature: 40. Flow rate: 1.5mL/min  
Mobile phase: Water: ACN 70: 30

Tgt Mass(EZX) :  
Location : P1-C-03  
Inj : 0  
Inj Volume : 5 ul

ELS1 A, Voltage



Integration Results for ELS1 A, Voltage

RetTim	Width	Area	Height	Area%
4.11	0.04	0.03	0.01	0.12
5.47	0.21	24.14	3.26	99.88