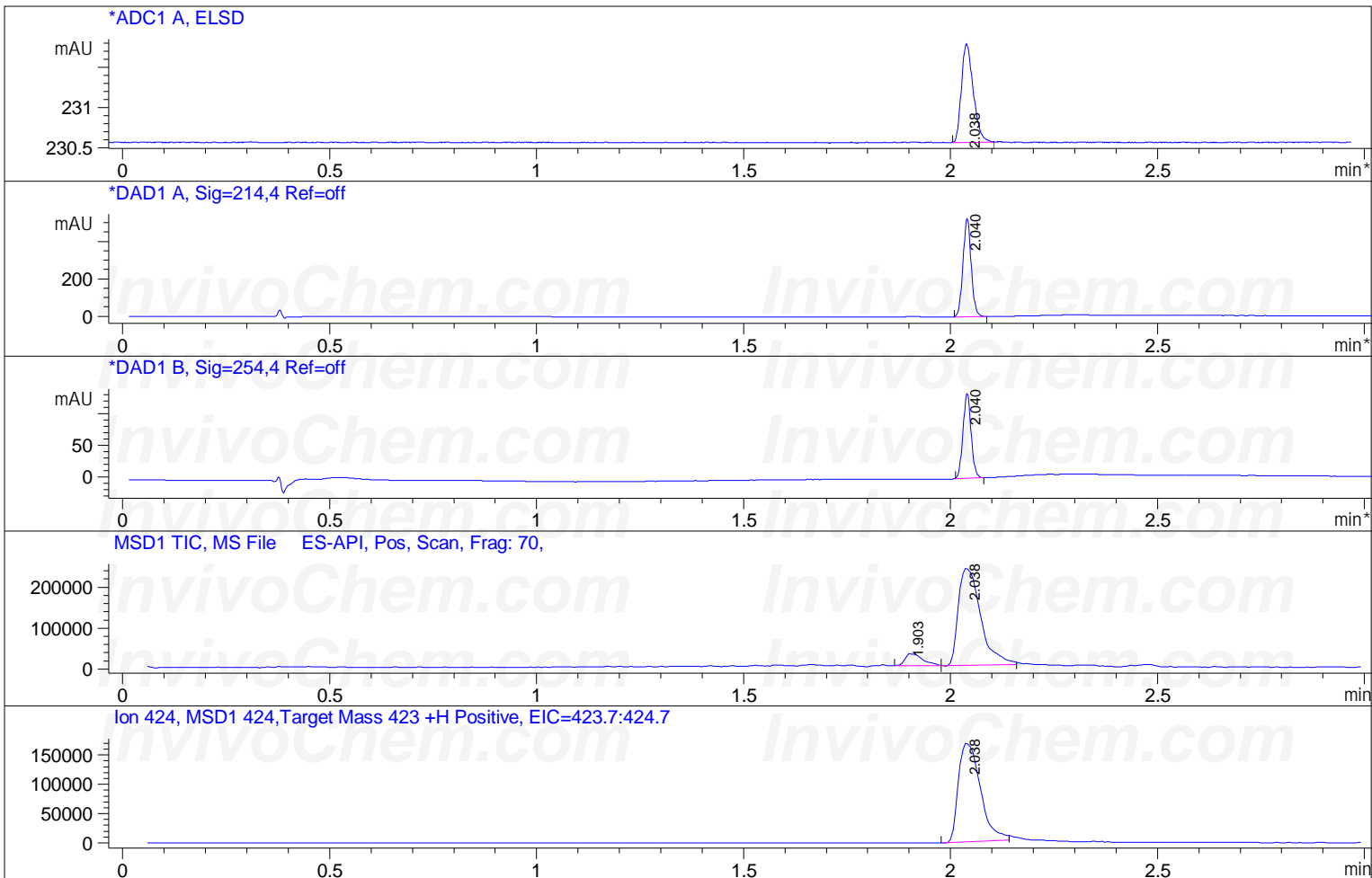


**Injection Date** : 22 Mar 20  
**Sample Name** : SC-26196  
**Acq. Operator** : YDY  
**Spec. Reported** : MS Integration  
**Acq. Method** : E\1-POS-3MIN.M  
**Analysis Method** : E\1-POS-3MIN.M  
**Sample Info** : Easy-Access Method: '1-POS-3MIN.M' 423.00  
**Method Info** : Mobile Phase: A:Water(10mM NH4HCO3) B:ACN  
 Gradient: 5% increase to 95%B within 1.4min, 95%B for 1.6min.  
 Flow Rate: 1.8ml/min  
 Column: XBridge C18,4.6\*50mm,3.5um  
 Column Temperature: 45 C  
 Detection:UV(214,4nm) and MS(ESI,Neg mode,110 to 1000 amu)



**Integration Results for ADC1 A, ELSD**

RetTim	Width	Area	Height	Area%
2.04	0.03	2.42	1.22	100.00

**Integration Results for DAD1 A, Sig=214,4 Ref=off**

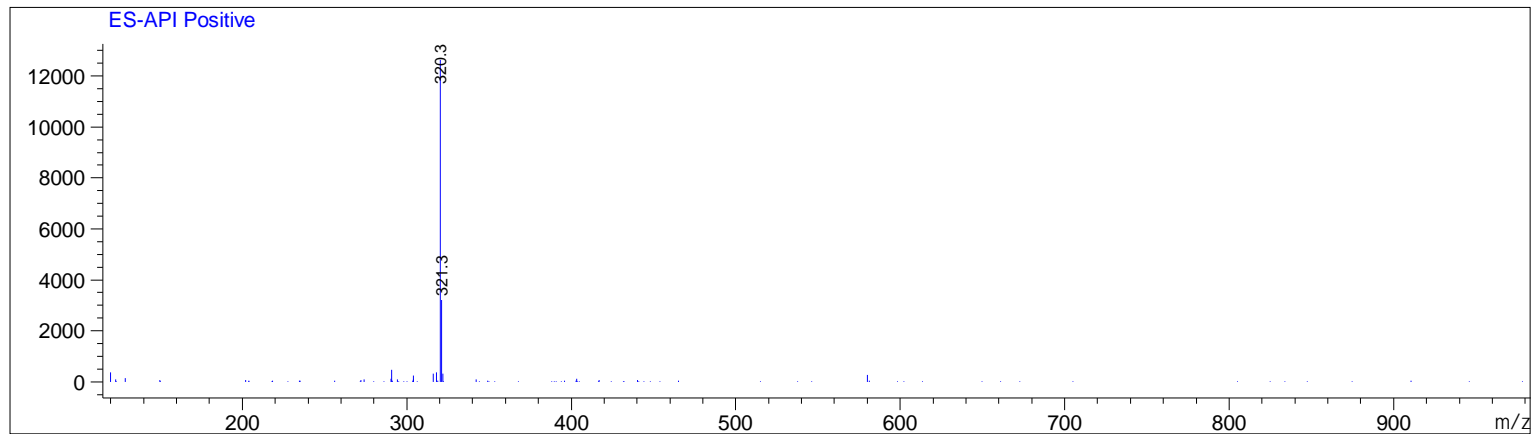
RetTim	Width	Area	Height	Area%
2.04	0.02	721.70	524.27	100.00

**Integration Results for DAD1 B, Sig=254,4 Ref=off**

RetTim	Width	Area	Height	Area%
2.04	0.02	182.85	133.78	100.00

Ret. Time: 1.90

&lt;&lt;&lt;&lt; POSITIVE SPECTRA &gt;&gt;&gt;&gt;



Ret. Time: 2.04

