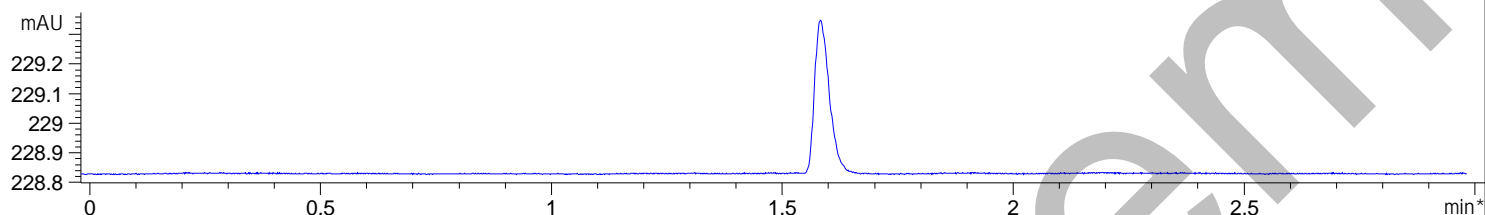


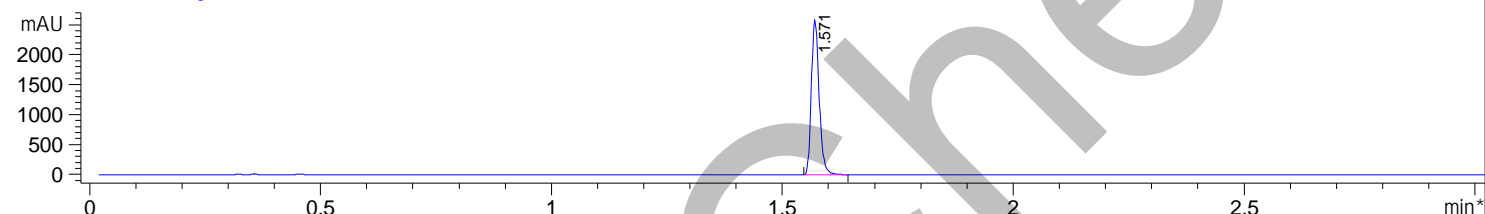


File D:\DATA\T195\MONITOR\I  
 Injection Date : 23 Aug 21 8:00 pm +0800 Tgt Mass(EZX) :  
 Sample Name : H3 Location : P1-C-02  
 Acq. Operator : T195-MONITOR Inj : 1  
 Spec. Reported : MS Integration Inj Volume : 2 ul  
 Acq. Method : D:\METHODS\1-POS-3MIN.M  
 Analysis Method : D:\METHODS\1-POS-3MIN.M  
 Sample Info : Easy-Access Method: '1-POS-3MIN.M'  
 Method Info : Mobile Phase: A:Water(10mM NH<sub>4</sub>HCO<sub>3</sub>) B:ACN  
 Gradient: 5% increase to 95%B within 1.4min, 95%B for 1.6min.  
 Flow Rate: 1.8ml/min  
 Column: XBridge C18,4.6\*50mm,3.5um  
 Column Temperature: 45 C  
 Detection:UV(214,4nm) and MS(ESI,Neg mode,110 to 1000 amu)

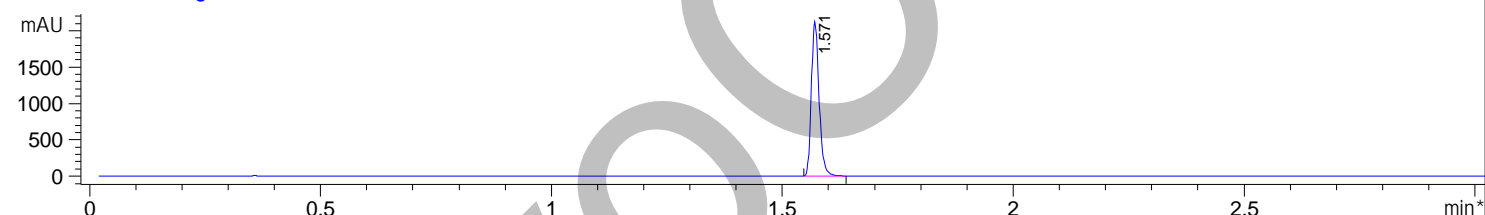
## \*ADC1 A, ELSD



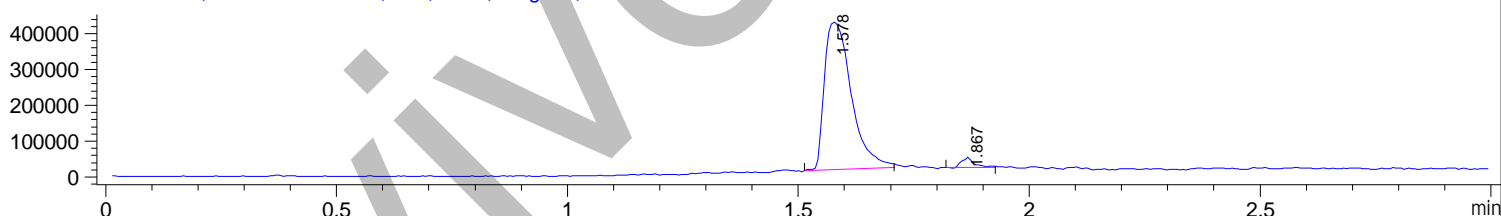
## \*DAD1 A, Sig=214,4 Ref=off



## \*DAD1 B, Sig=254,4 Ref=off



## MSD1 TIC, MS File ES-API, Pos, Scan, Frag: 70,



## Integration Results for ADC1 A, ELSD

| RetTim | Width | Area    | Height  | Area%  |
|--------|-------|---------|---------|--------|
| 1.57   | 0.02  | 3066.01 | 2582.44 | 100.00 |

## Integration Results for DAD1 A, Sig=214,4 Ref=off

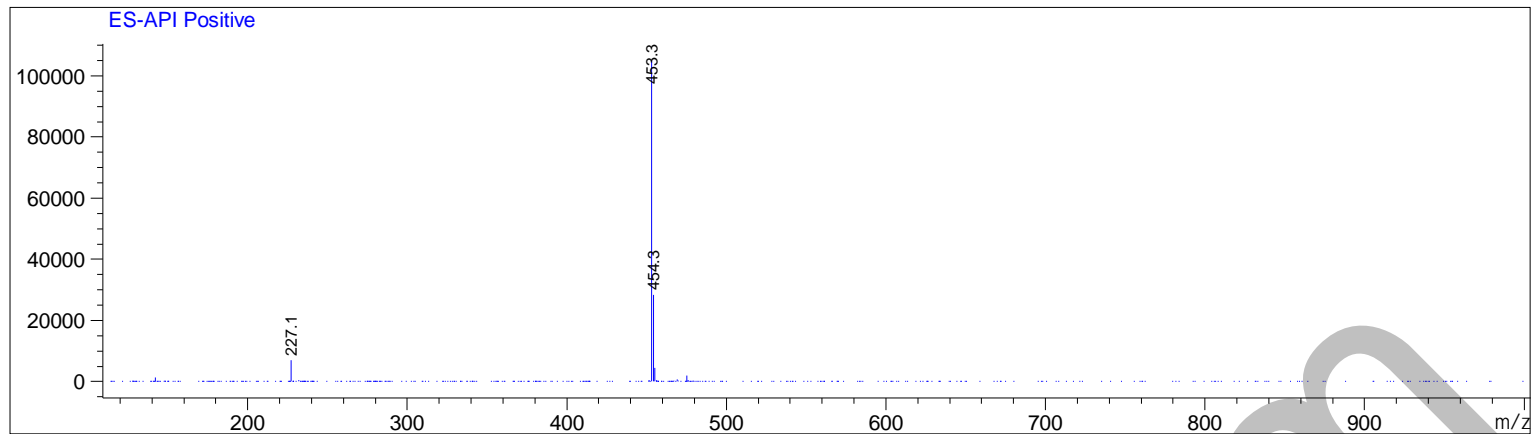
| RetTim | Width | Area    | Height  | Area%  |
|--------|-------|---------|---------|--------|
| 1.57   | 0.02  | 3066.01 | 2582.44 | 100.00 |

## Integration Results for DAD1 B, Sig=254,4 Ref=off

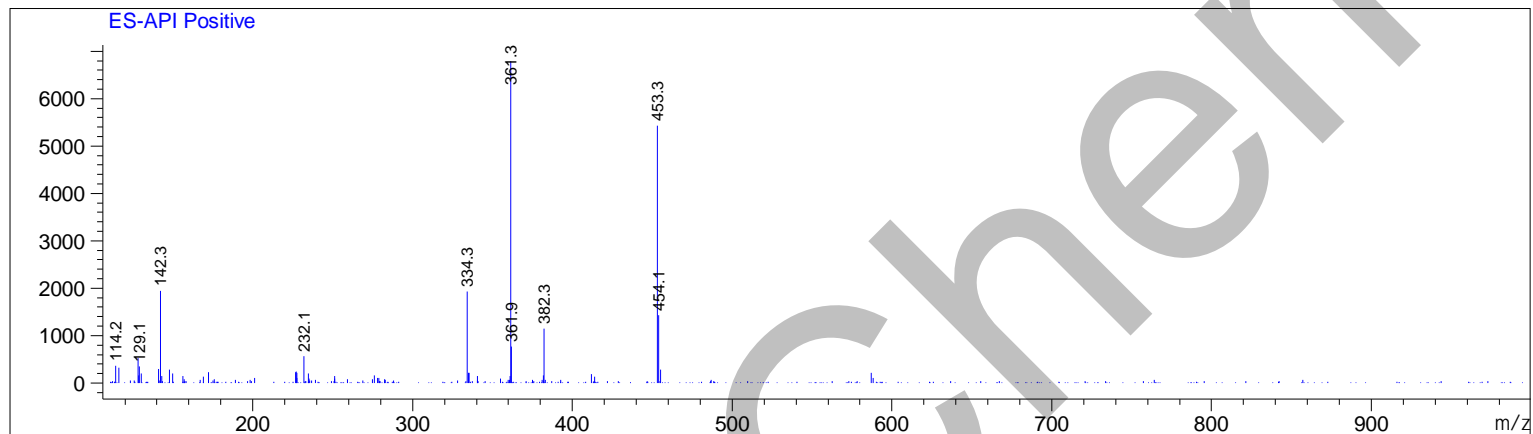
| RetTim | Width | Area    | Height  | Area%  |
|--------|-------|---------|---------|--------|
| 1.57   | 0.02  | 2490.45 | 2124.32 | 100.00 |

Product Name: GSK3326595  
 InvivoChem Cat #: V3142  
 CAS #: 1616392-22-3  
 Batch #: V314201  
 Formula: C<sub>24</sub>H<sub>32</sub>N<sub>6</sub>O<sub>3</sub>  
 Molecular Weight: 452.55

Ret. Time: 1.58 <<<< POSITIVE SPECTRA >>>>



Ret. Time: 1.87



InvivoChem