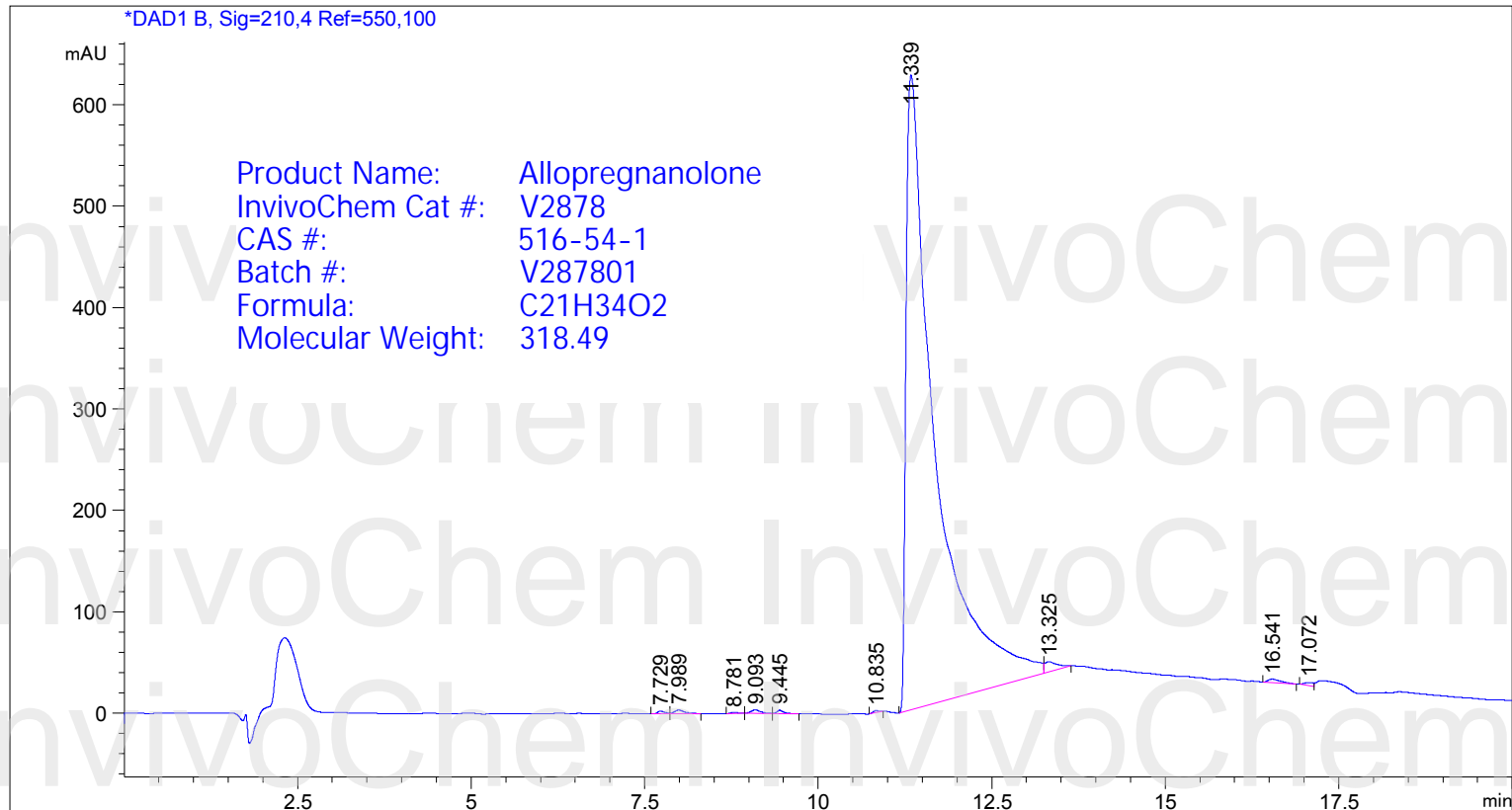


Acq. Operator : SYSTEM
Acq. Instrument : 12601c

Seq. Line : 11
Location : Vial 36

Inj Volume : 2.000 µl
Different Inj Volume from Sample Entry! Actual Inj Volume : 40.000 µl

Additional Info : Peak(s) manually integrated



Area Percent Report

Sorted By : Signal
Multiplier : 1.0000
Dilution : 1.0000
Use Multiplier & Dilution Factor with ISTDs

Signal 1: DAD1 B, Sig=210,4 Ref=550,100

Signal has been modified after loading from rawdata file!

Peak #	RetTime [min]	Type	Width [min]	Area [mAU*s]	Height [mAU]	Area %
1	7.729	BV	0.0983	18.44512	2.64770	0.0986
2	7.989	VB	0.1365	34.03214	3.54505	0.1820
3	8.781	BB	0.0851	7.82769	1.14694	0.0419
4	9.093	BV	0.1251	30.06004	3.33841	0.1607
5	9.445	VB	0.1009	23.86943	3.35883	0.1276
6	10.835	BB	0.0932	11.98917	1.91094	0.0641
7	11.339	BV	0.3992	1.83814e4	625.70001	98.2749

Peak #	RetTime [min]	Type	Width [min]	Area [mAU*s]	Height [mAU]	Area %
8	13.325	VB	0.1628	125.34656	10.20722	0.6702
9	16.541	VB	0.1721	45.04974	3.51436	0.2409
10	17.072	BV	0.1140	26.05293	2.72620	0.1393

Totals : 1.87041e4 658.09567

=====
*** End of Report ***

InvivoChem InvivoChem
InvivoChem InvivoChem
InvivoChem InvivoChem
InvivoChem InvivoChem
InvivoChem InvivoChem
InvivoChem InvivoChem