

HPLC Analysis for V589601 Bifemelane HCl

Inj Volume : 2.000 µl

Different Inj Volume from Sample Entry! Actual Inj Volume : 5.000 µl

Acq. Method : C:\Chem32\1\Methods\Analytical-TFA-220-254nm-1.M

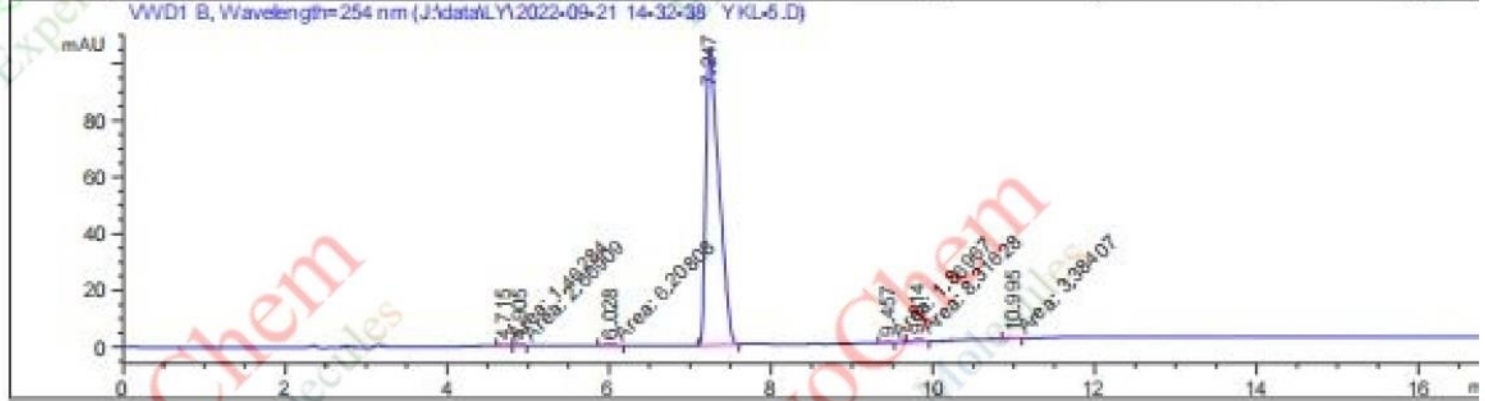
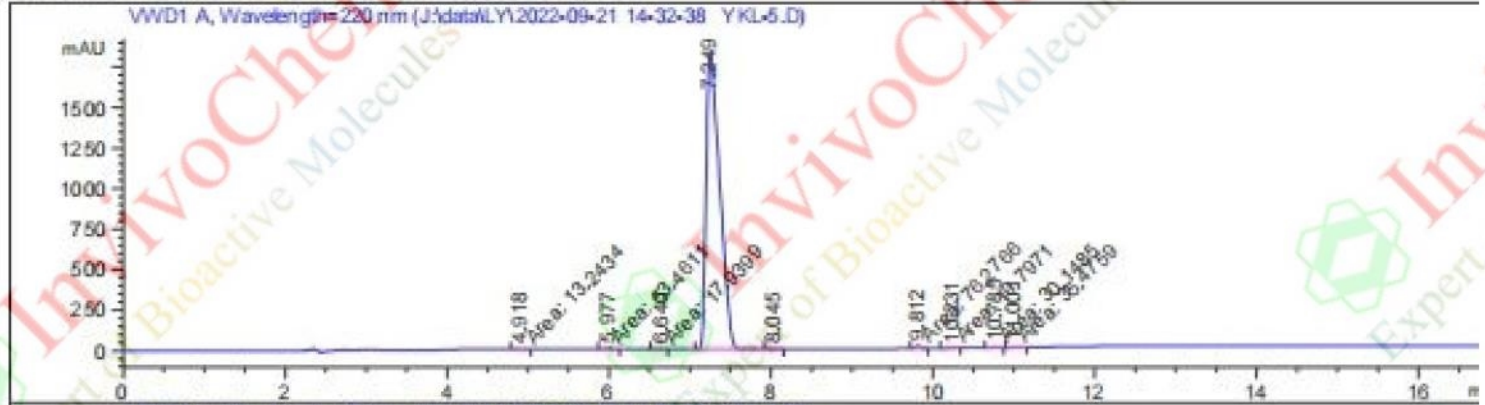
Last changed : 12/6/2021 19:09:21 by SYSTEM

Analysis Method : C:\CHEM32\1\METHODS\Analytical-TFA-70MIN-AB-0915.M

Last changed : 9/21/2022 14:45:13 by SYSTEM

(modified after loading)

Additional Info : Peak(s) manually integrated

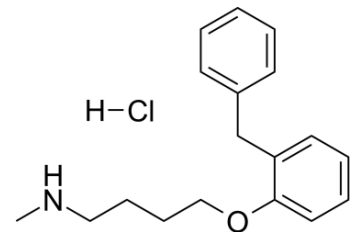


Area Percent Report

Sorted By : Signal
 Multiplier : 1.0000
 Dilution : 1.0000
 Sample Amount : 1.00000 [ng/ul] (not used in calc.)
 Use Multiplier & Dilution Factor with ISTDs

Signal 1: W01 A, Wavelength=220 nm

Peak #	RetTime [min]	Type	Width [min]	Area [mAU*s]	Height [mAU]	Area %
1	4.918	MM	0.1736	13.24342	1.27173	0.0615
2	5.977	MM	0.1150	53.46105	7.74718	0.2481
3	6.640	MM	0.1272	17.93992	2.35054	0.0833
4	7.249	BV R	0.1759	2.12858e4	1827.26453	98.7953



Product Name: Bifemelane HCl
 InvivoChem Cat #: V5896
 CAS #: 62232-46-6
 Batch #: V589601
 Formula: C18H24ClNO
 Molecular Weight: 305.846