

HPLC Analysis for V356201 GSK2795039

Data File C:\CHEM32\1\DATA\2020\202012\QWJ 2020-12-30 14-09-38\010-0101.D
Sample Name: imb-001-zxx

Area Percent Report

Sorted By : Signal
Multiplier : 1.0000
Dilution : 1.0000
Use Multiplier & Dilution Factor with ISTDs

Signal 1: DAD1 A, Sig=220,4 Ref=off

Peak #	RetTime [min]	Type	Width [min]	Area [mAU*s]	Height [mAU]	Area %
1	7.636	BB	0.0549	5414.87646	1543.07593	98.2680
2	8.091	BB	0.0527	95.44080	28.73954	1.7320

Totals : 5510.31726 1571.81547

Signal 2: DAD1 B, Sig=254,16 Ref=off

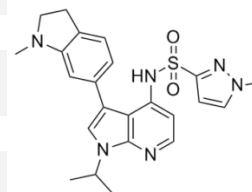
Peak #	RetTime [min]	Type	Width [min]	Area [mAU*s]	Height [mAU]	Area %
1	7.636	BB	0.0549	3534.83960	1008.42523	98.3732
2	8.091	BB	0.0530	58.45481	17.49373	1.6268

Totals : 3593.29441 1025.91896

Signal 3: DAD1 C, Sig=210,8 Ref=off

Peak #	RetTime [min]	Type	Width [min]	Area [mAU*s]	Height [mAU]	Area %
1	7.636	BB	0.0551	6604.59229	1873.15515	98.6017
2	8.091	BB	0.0533	93.66209	27.77401	1.3983

Totals : 6698.25438 1900.92916



Product Name: GSK2795039
InvivoChem Cat #: V3562
CAS #: 1415925-18-6
Batch #: V356201
Formula: C23H26N6O2S
Molecular Weight: 450.56

*** End of Report ***