

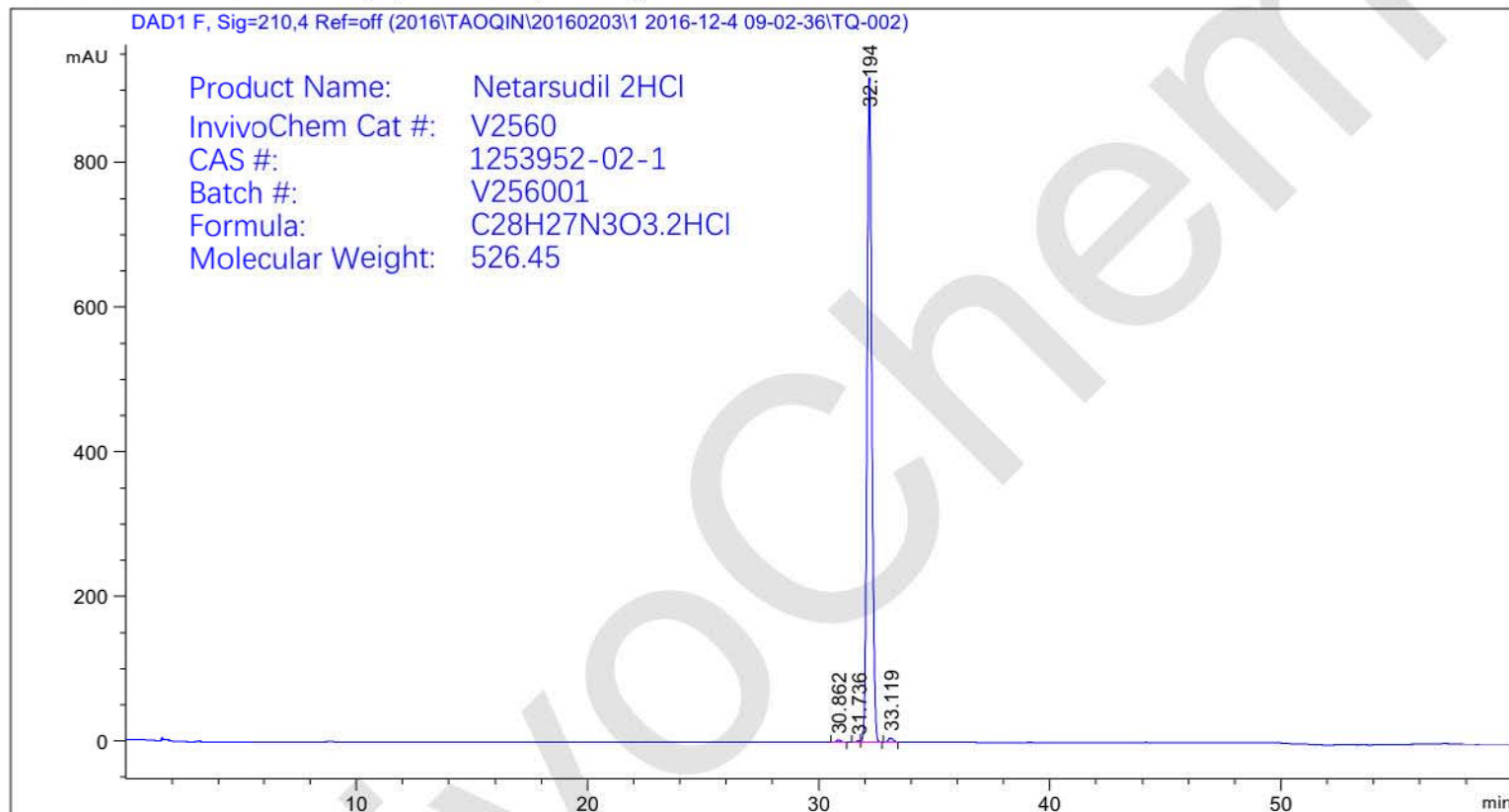
HPLC Analysis for Netarsudil 2HCl



```

=====
Acq. Operator   : SYSTEM                      Seq. Line :    7
Acq. Instrument : HPLC                      Location  : Vial 64
Injection Date  : 12/4/2016 3:22:28 PM      Inj       :    1
                                                Inj Volume: 5.000 µl
Acq. Method     : D:\DATA\2016\TAOQIN_20151118_\20161204\1 2016-12-4

Last changed    : 12/4/2016 1:03:26 PM by SYSTEM
Analysis Method : D:\METHOD\2016\20151118_00694\SAM-TQ-001-01.M
Last changed    : 12/4/2016 12:25:25 PM by SYSTEM
                (modified after loading)
Additional Info  : Peak(s) manually integrated
    
```



Area Percent Report

```

Sorted By      : Signal
Multiplier     : 1.0000
Dilution      : 1.0000
Use Multiplier & Dilution Factor with ISTDs
    
```

Signal 1: DAD1 F, Sig=210,4 Ref=off

Peak #	RetTime [min]	Type	Width [min]	Area [mAU*s]	Height [mAU]	Area %
1	30.862	MM	0.2363	54.83726	3.16296	0.4487
2	31.736	MF	0.1843	32.78434	2.06097	0.2683
3	32.194	FM	0.2375	1.20090e4	920.01294	98.2692
4	33.119	MM	0.2333	123.89628	5.99266	1.0138

Totals : 1.22205e4 931.22954