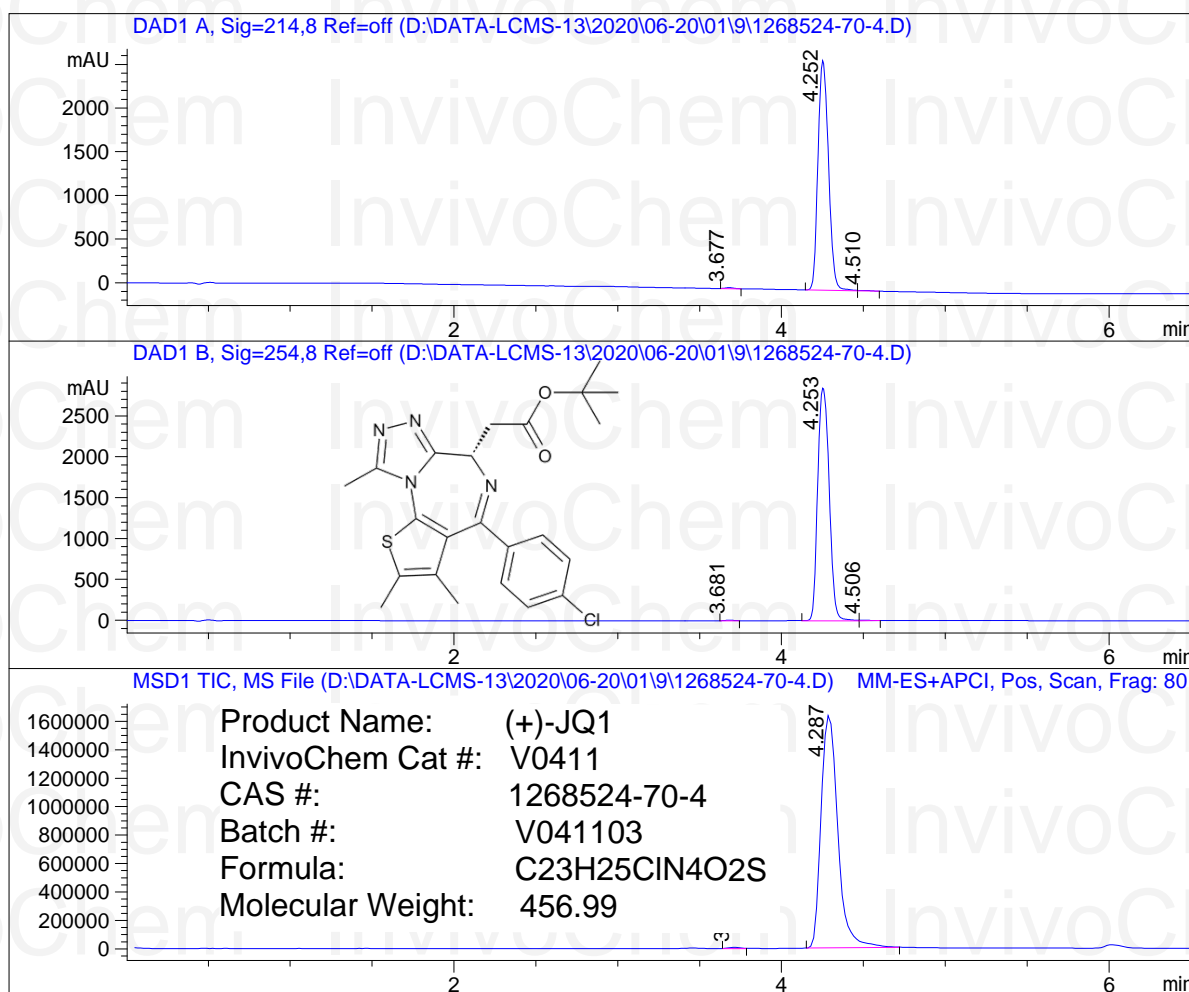


LCMS Report

Sample Name : 1268524-70-4
 Data File : D:\DATA-LCMS-13\2020\06-20\01\9\1268524-70-4.D
 Injection Date : Mon, 1. Jun. 2020 Inj. Vol. : 3ul
 Acq Operator : LCMS-13 Location : Vial 41
 Acq. Method : D:\data-lcms-13\2020\06-20\01\9\P-05-95.M
 Method Info. : column:Xbridge C18 5um 4.6*50mm ;mobile phase:B(ACN),
 A(0.02%NH4Ac); gradient(B%):as Acq.Method above



=====
 Integration Results
 =====

Signal 1: DAD1 A, Sig=214,8 Ref=off

#	R.T.	Type	Height	Height%	Width	Area	Area %
1	3.677	FM	11.583	0.436	0.064	44.620	0.378
2	4.252	MF	2636.626	99.286	0.074	11725.632	99.312
3	4.510	FM	7.388	0.278	0.082	36.564	0.310

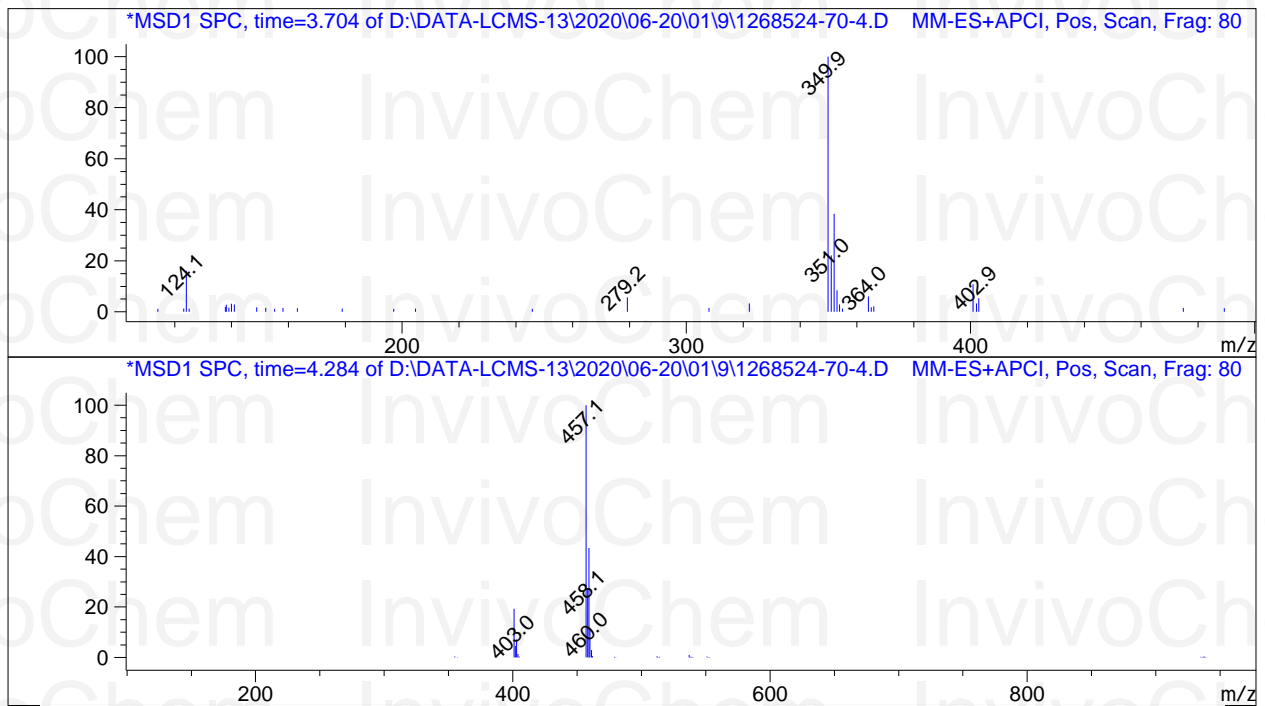
Signal 2: DAD1 B, Sig=254,8 Ref=off

HPLC Analysis for V041103 (+)-JQ1

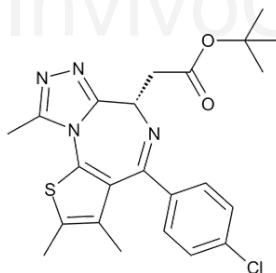
#	R.T.	Type	Height	Height%	Width	Area	Area %
1	3.681	FM	7.598	0.265	0.065	29.792	0.215
2	4.253	BV	2851.393	99.525	0.079	13829.690	99.595
3	4.506	VB	6.024	0.210	0.065	26.482	0.191

Signal 3: MSD1 TIC, MS File

#	R.T.	Type	Height	Height%	Width	Area	Area %
1	3.707	FM	8805.538	0.532	0.079	41620.328	0.354
2	4.287	FM	1.646e+006	99.468	0.119	1.171e+007	99.646



*** End of Report ***



Product Name: (+)-JQ1
InvivoChem Cat #: V0411
CAS #: 1268524-70-4
Batch #: V041103
Formula: C₂₃H₂₅ClN₄O₂S
Molecular Weight: 456.99