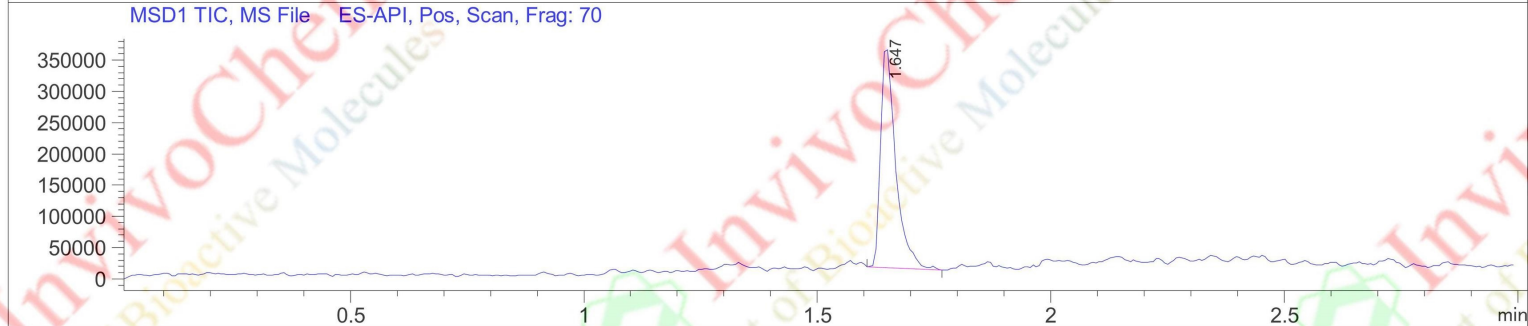
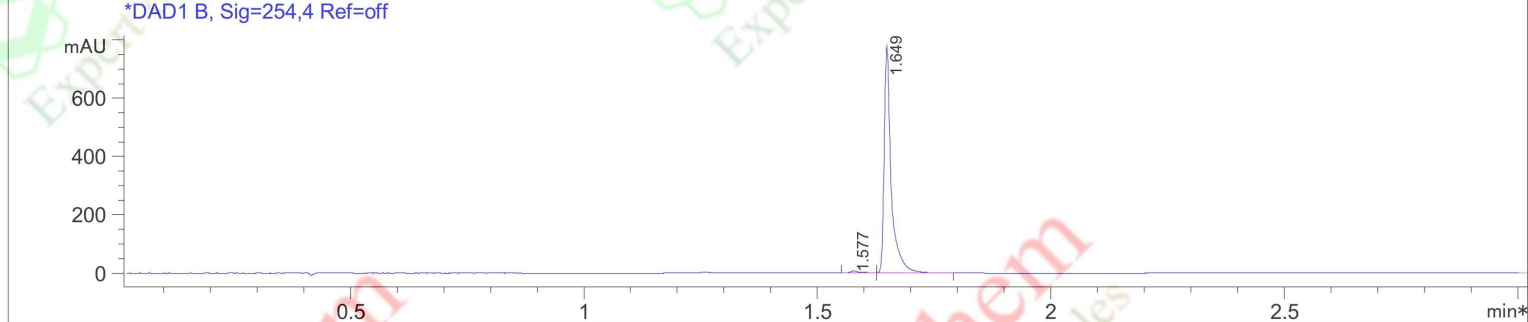
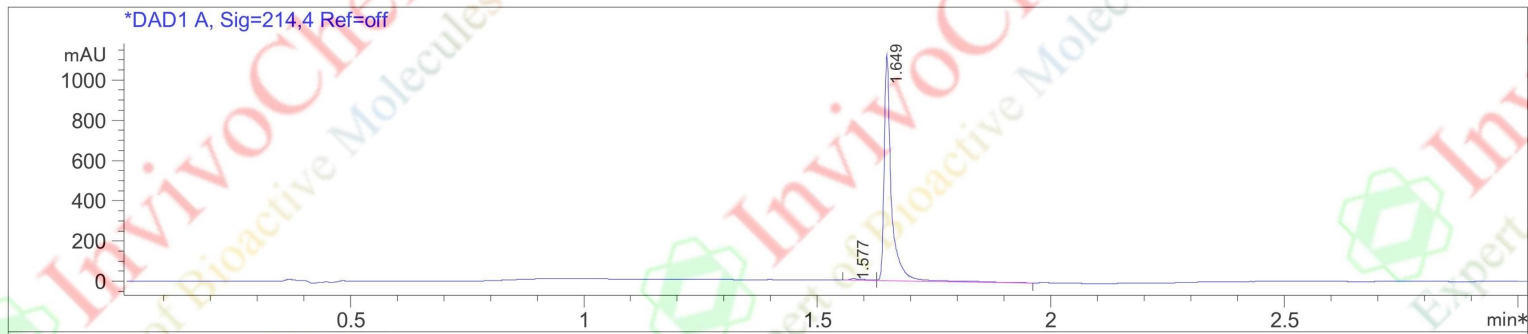


# HPLC Analysis for V1970301 DFHBI-1T



Integration Results for DAD1 A, Sig=214,4 Ref=off

RetTim	Width	Area	Height	Area%
1.58	0.03	14.56	7.08	1.18
1.65	0.02	1220.39	1122.24	98.82

Integration Results for DAD1 B, Sig=254,4 Ref=off

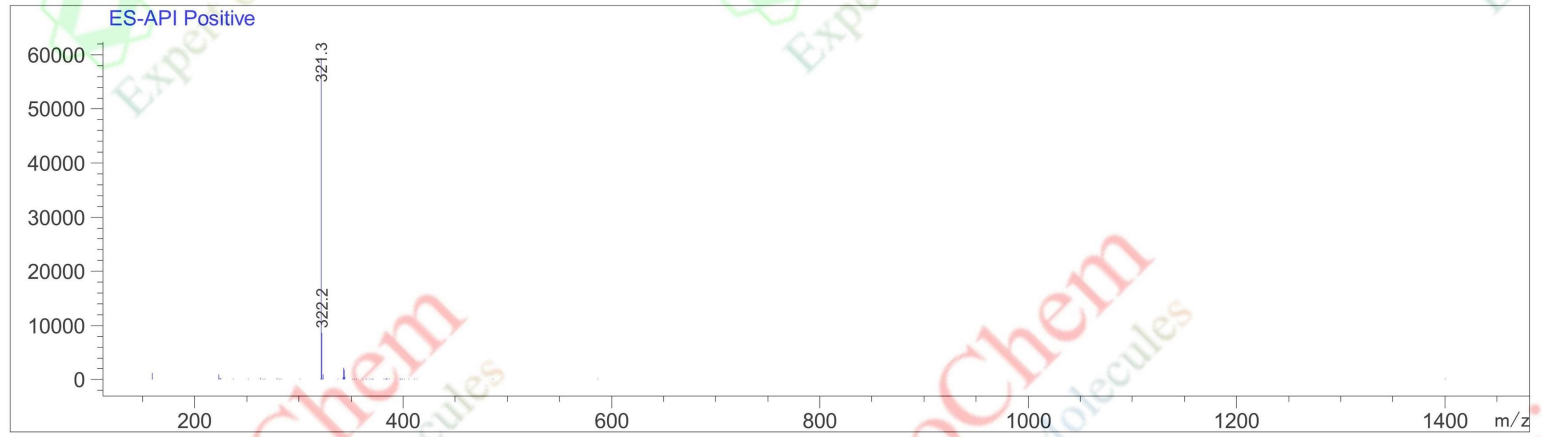
RetTim	Width	Area	Height	Area%
1.58	0.02	8.54	6.02	1.03
1.65	0.02	821.23	777.32	98.97

**Product Name:** DFHBI-1T  
**InvivoChem Cat #:** V19703  
**CAS #:** 1539318-36-9  
**Batch #:** V1970301  
**Formula:** C<sub>13</sub>H<sub>9</sub>F<sub>5</sub>N<sub>2</sub>O<sub>2</sub>  
**Molecular Weight:** 320.214780569077

# LCMS Analysis for V1970301 DFHBI-1T

Ret. Time: 1.65

<<<< POSITIVE SPECTRA >>>>



Product Name: DFHBI-1T  
InvivoChem Cat #: V19703  
CAS #: 1539318-36-9  
Batch #: V1970301  
Formula: C<sub>13</sub>H<sub>9</sub>F<sub>5</sub>N<sub>2</sub>O<sub>2</sub>  
Molecular Weight: 320.214780569077  
Exact Mass: 320.058