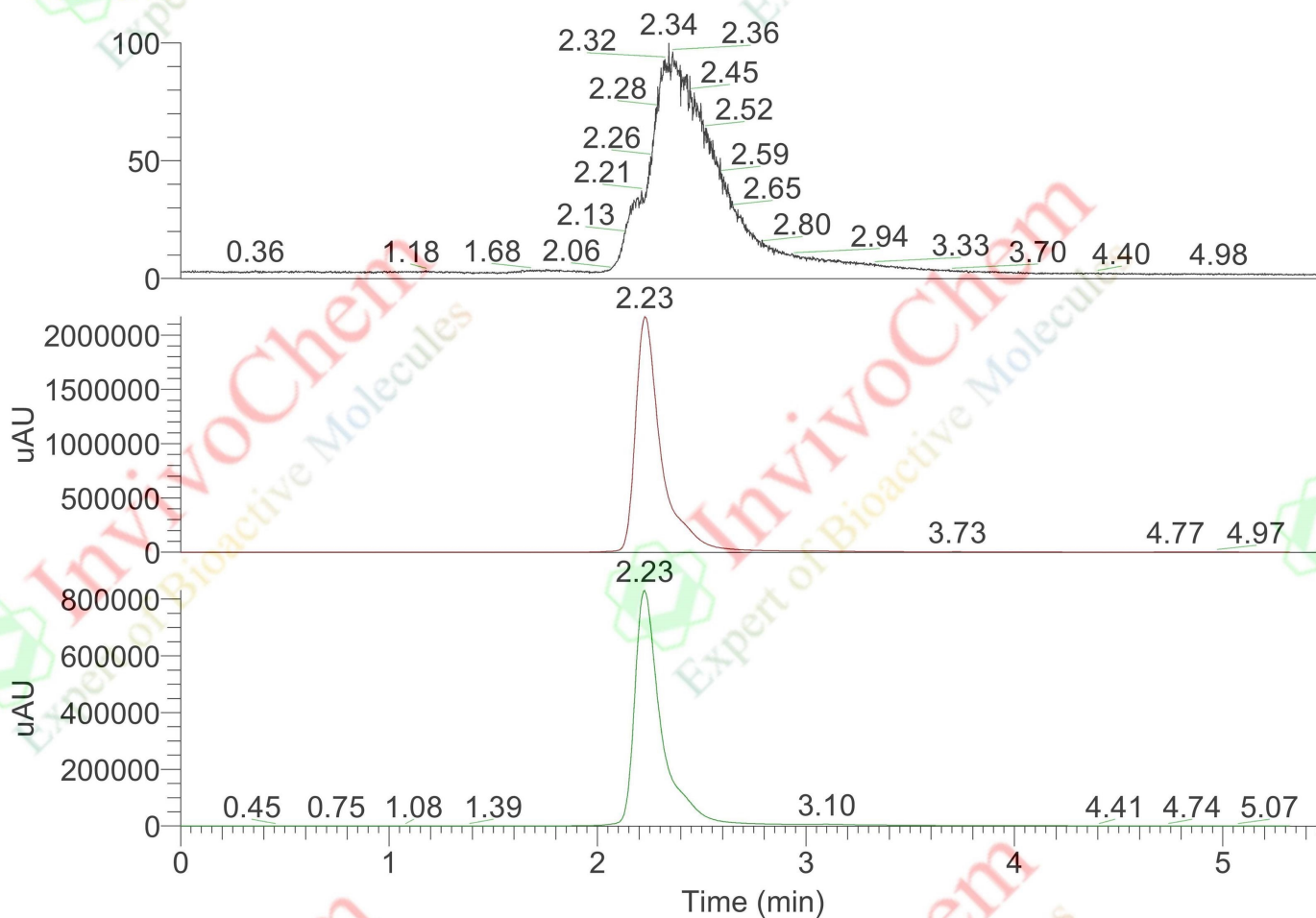


LCMS Analysis for V4184901 Senaparib

D:\wailaiyangpin\20201014\YCSW-LWS-TP

12/18/2020 8:56:48 AM

RT: 0.00 - 5.49



NL:
1.77E6
TIC MS
YCSW-LWS-TP

NL:
2.17E6
UV_VIS_1
UV
YCSW-LWS-TP

NL:
8.31E5
UV_VIS_2
UV 2
YCSW-LWS-TP

YCSW-LWS-TP #1016 RT: 2.35 AV: 1 NL: 9.78E5
T: ITMS + c ESI Full ms [200.00-800.00]

