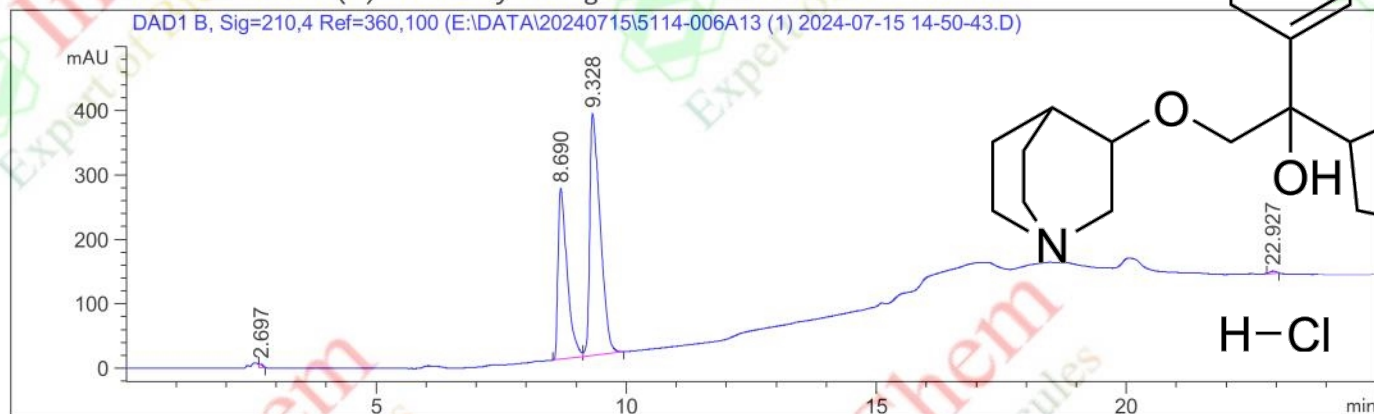


```

=====
Acq. Operator   : SYSTEM
Sample Operator : SYSTEM
Acq. Instrument : LC-4
Injection Date  : 7/15/2024 2:52:30 PM
Location       : 4
Inj            : 1
Inj Volume     : 6.000 µl

Acq. Method    : D:\METHOD 123\55-90(3-15min,25min,CH3OH).M
Last changed   : 7/15/2024 2:50:32 PM by SYSTEM
                (modified after loading)
Analysis Method : E:\DATA\20240715\DEF_LC.S1 2024-07-15 10-16-03\20-90(3-15min,25min,CH3CN).M
                (Sequence Method)
Last changed   : 7/15/2024 4:18:58 PM by SYSTEM
                (modified after loading)
Sample Info    : YMC-Triart C18(4.6*250mm,S-5um,12nm),F=1.0ml/min,T=30degree,
                CH3OH/10mmol/L NaH2PO4+ 0.05% H3PO4 = 55/45(0-3min),55/45-90/10(3-15min),90
                /10(after 15min)
                1.3mg in 0.8ml CH3OH
    
```

Additional Info : Peak(s) manually integrated



Area Percent Report

```

Sorted By      : Signal
Multiplier     : 1.0000
Dilution       : 1.0000
Do not use Multiplier & Dilution Factor with ISTDs

Product Name:   Penehyclidine HCl
InvivoChem Cat #: V49098
CAS #:          151937-76-7
Batch #:        V4909801
Formula:        C20H29NO2.CLH
Molecular Weight: 351.9107
    
```

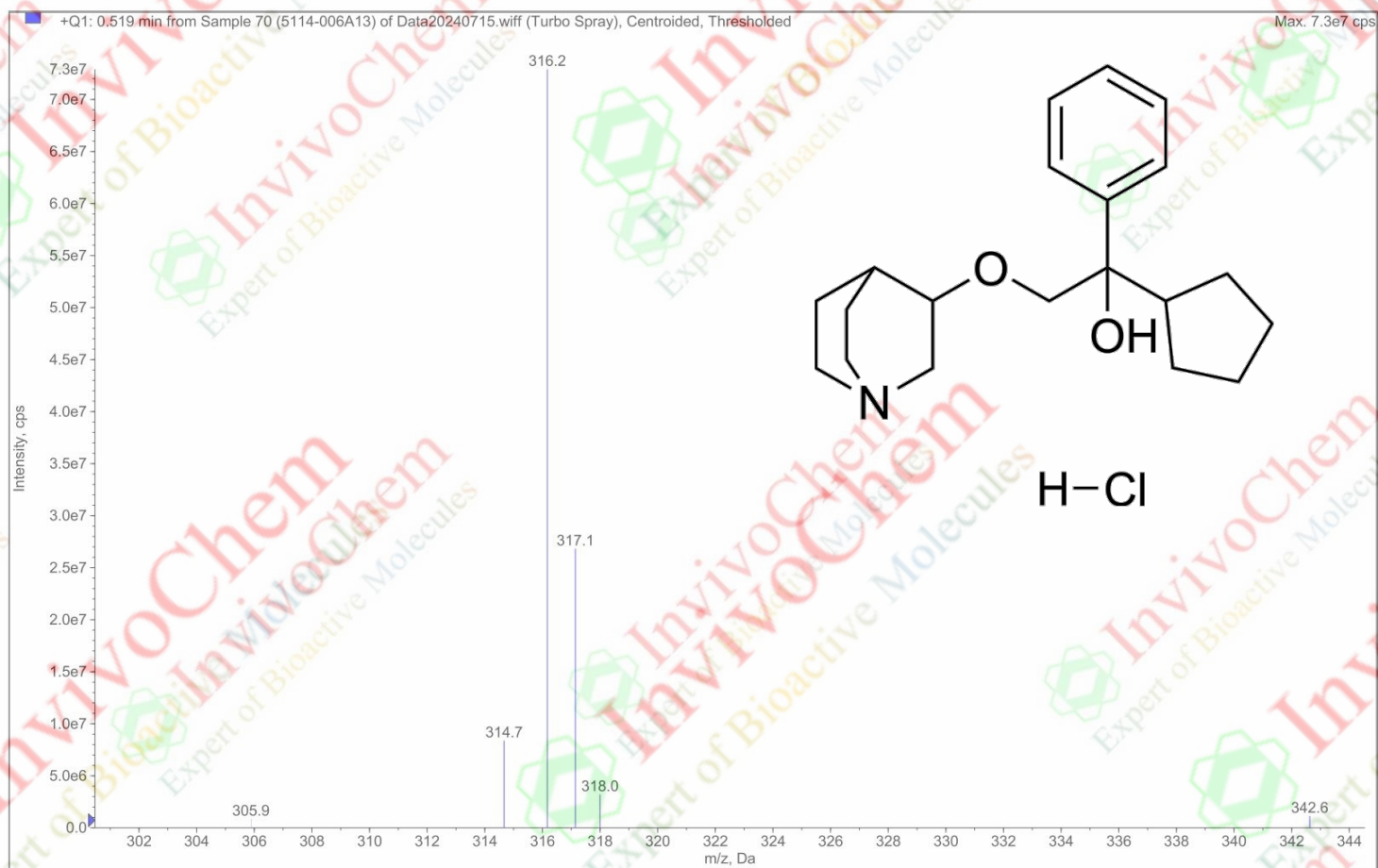
Signal 1: DAD1 B, Sig=210,4 Ref=360,100

Peak #	RetTime [min]	Type	Width [min]	Area [mAU*s]	Height [mAU]	Area %
1	2.697	FM R	0.0843	27.36244	5.40730	0.3080
2	8.690	BV	0.1896	3356.35571	265.33826	37.7751
3	9.328	VB	0.2199	5468.43750	375.57214	61.5461
4	22.927	MM R	0.1500	32.94767	3.65969	0.3708

Totals : 8885.10332 649.97739

\*\*\* End of Report \*\*\*

# LCMS Analysis for V4909801 Penehyclidine HCl



Product Name:	Penehyclidine HCl
InvivoChem Cat #:	V49098
CAS #:	151937-76-7
Batch #:	V4909801
Formula:	C <sub>20</sub> H <sub>29</sub> NO <sub>2</sub> .CLH
Molecular Weight:	351.9107
Exact Mass:	351.197