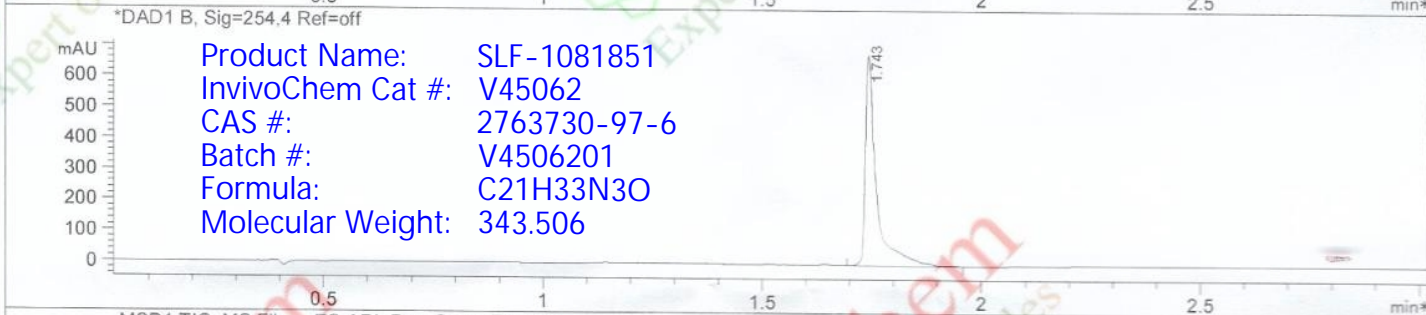
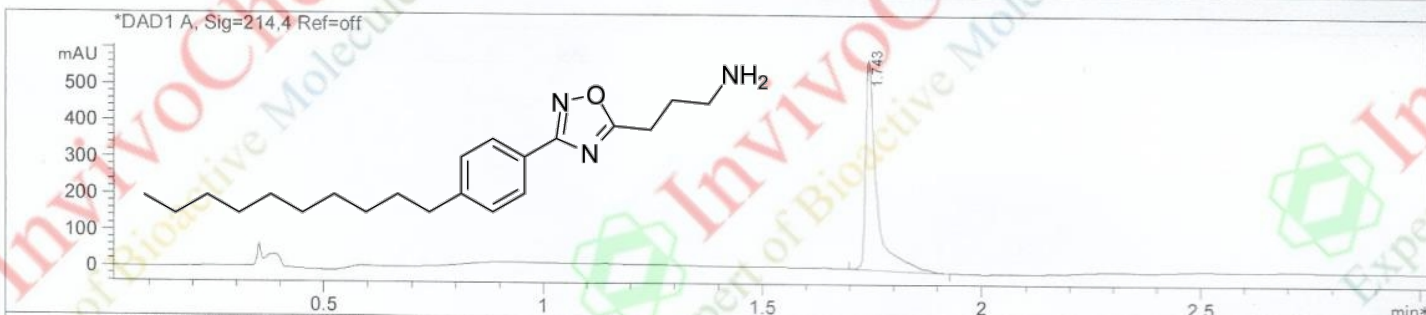
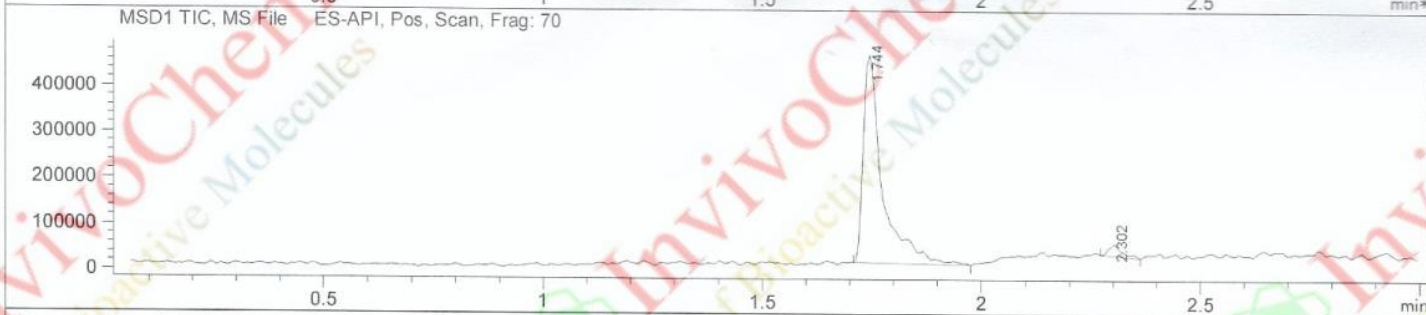


LC/MS Report

Acq. Method : D:\METHODS\1-POS-3MIN.M  
 Analysis Method : D:\METHODS\1-POS-3MIN.M  
 Sample Info : Easy-Access Method: '1-POS-3MIN.M'  
 Method Info : Mobile Phase: A: water(0.01%TFA) B: ACN(0.01%TFA)  
 Gradient: 5% increase to 95%B within 1.3 min, 95%B for 1.7 min.  
 Flow Rate: 2.0ml/min  
 Column: Sunfire C18, 4.6\*50mm, 3.5um  
 Column Temperature: 50 C  
 Detection: UV(214, 4nm) and MS(ESI, Pos mode, 110 to 1500 amu)



Product Name: SLF-1081851  
 InvivoChem Cat #: V45062  
 CAS #: 2763730-97-6  
 Batch #: V4506201  
 Formula: C21H33N3O  
 Molecular Weight: 343.506



Integration Results for DAD1 A, Sig=214.4 Ref=off

RetTim	Width	Area	Height	Area%
1.74	0.03	1026.20	576.25	100.00

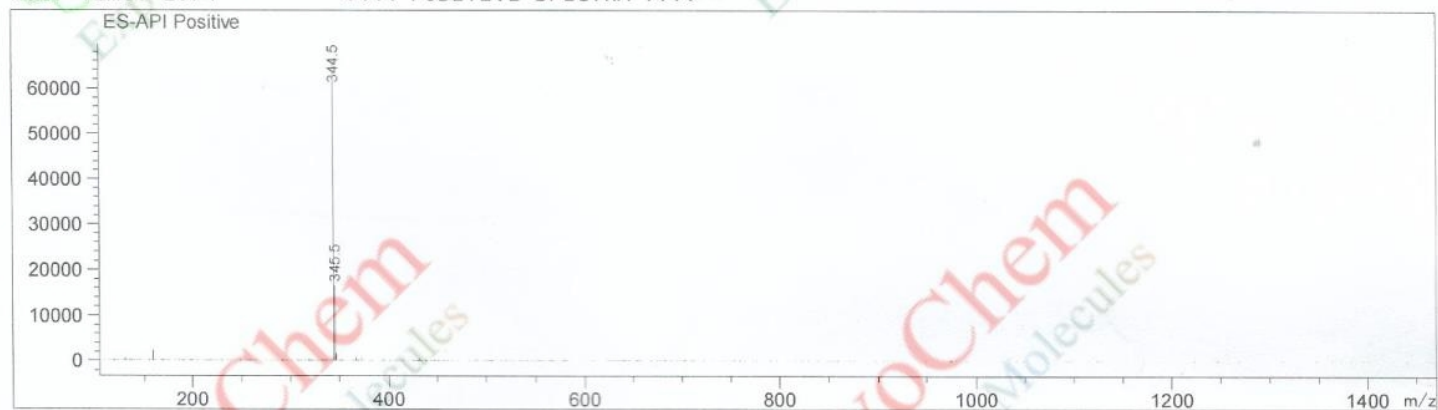
Integration Results for DAD1 B, Sig=254.4 Ref=off

RetTim	Width	Area	Height	Area%
1.74	0.02	1202.73	680.07	100.00

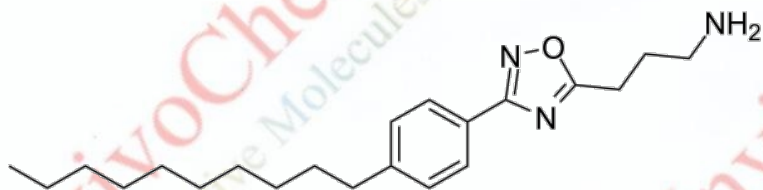
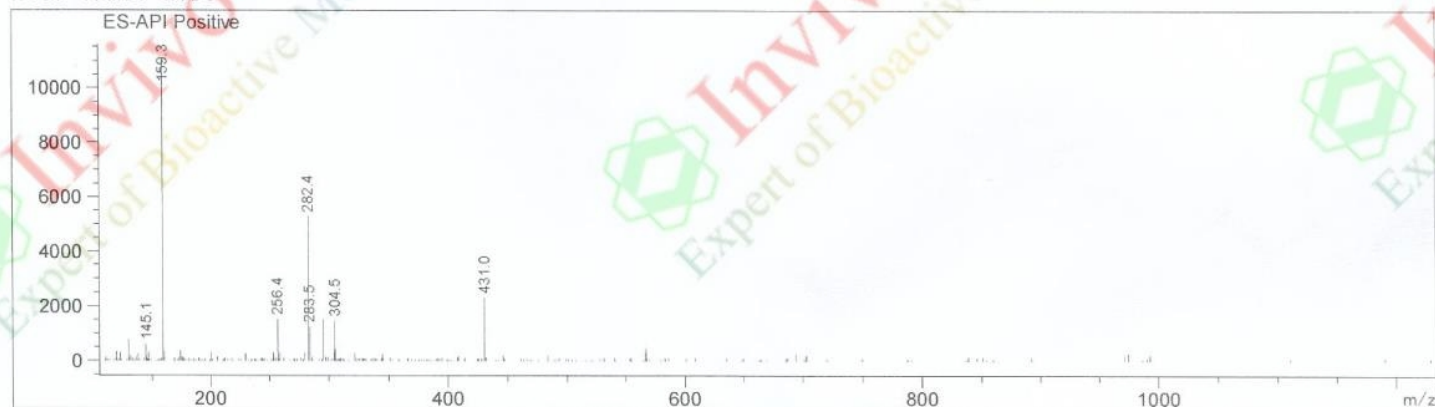
LC/MS Report

Ret. Time: 1.74

<<<< POSITIVE SPECTRA >>>>



Ret. Time: 2.30



Product Name: SLF-1081851  
 InvivoChem Cat #: V45062  
 CAS #: 2763730-97-6  
 Batch #: V4506201  
 Formula: C<sub>21</sub>H<sub>33</sub>N<sub>3</sub>O  
 Molecular Weight: 343.506