

# HPLC Analysis for V5220701 Cyclo(L-Phe-L-Val)

Data file: C:\CHEM32\1\DATA\240919\20240919 2024-09-19 13-41-45\603681  
24091909Final.D  
Sample name: 603681 24091909Final  
Description: Mobile Phase: Buffer A: 0.1% TFA in H<sub>2</sub>O  
Buffer B: 0.1% TFA in ACN  
Gradient: 22-32%B in 20min, Flow rate: 1.0ml/min  
Column: Unitary C18 5um 100A 4.6\*150mm  
Instrument: Agilent HPLC 1100  
Instrument: 1100 Location: 83  
Injection date: 2024/09/19 15:36:08 Injection: 1 of 1  
Last changed: 2024/09/20 9:04:25 Injection volume: 10.000  
Acq. operator: 系统

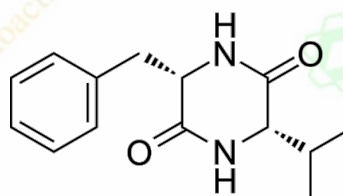
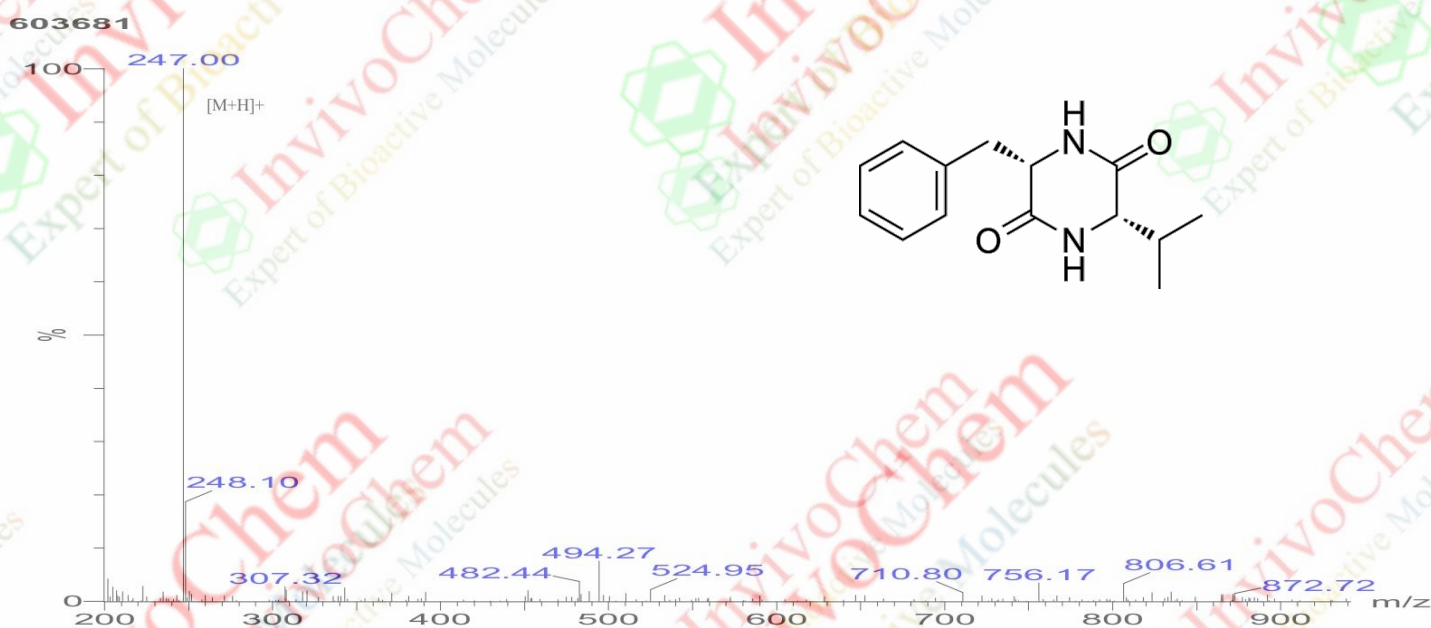


Signal: DAD1 A, Sig=220, 4 Ref=360, 100

RT[min]	Type	Width[min]	Area	Height	Area%	Name
6.806	MF	0.2018	10172.1904	840.0905	99.8802	
7.290	FM	0.0821	12.2039	2.4779	0.1198	
Sum			10184.3943			

Product Name: Cyclo(L-Phe-L-Val)  
InvivoChem Cat #: V52207  
CAS #: 35590-86-4  
Batch #: V5220701  
Formula: C<sub>14</sub>H<sub>18</sub>N<sub>2</sub>O<sub>2</sub>  
Molecular Weight: 246.30

MASS SPECTROMETRY REPORT



Sample Description  
 Analyzed date: 2024-11-19  
 Analyst: SHAO  
 Sample: 603681  
 M.W.: 246.3  
 Lot. No.:

Instrument	Waters ZQ 2000	Probe Bias:	+3.5kv
Probe:	ESI	Detector:	0.05kv
Nebulizer Gas Flow:	10L/min	T. Flow:	0.5ml/min
CDL:	52.0v	B. Conc.:	50%H2O/50%ACN
CDL Temp.:	350 °C		
Block Temp.:	120 °C		

Product Name: Cyclo(L-Phe-L-Val)  
 InvivoChem Cat #: V52207  
 CAS #: 35590-86-4  
 Batch #: V5220701  
 Formula: C<sub>14</sub>H<sub>18</sub>N<sub>2</sub>O<sub>2</sub>  
 Molecular Weight: 246.30  
 Exact Mass: 246.137