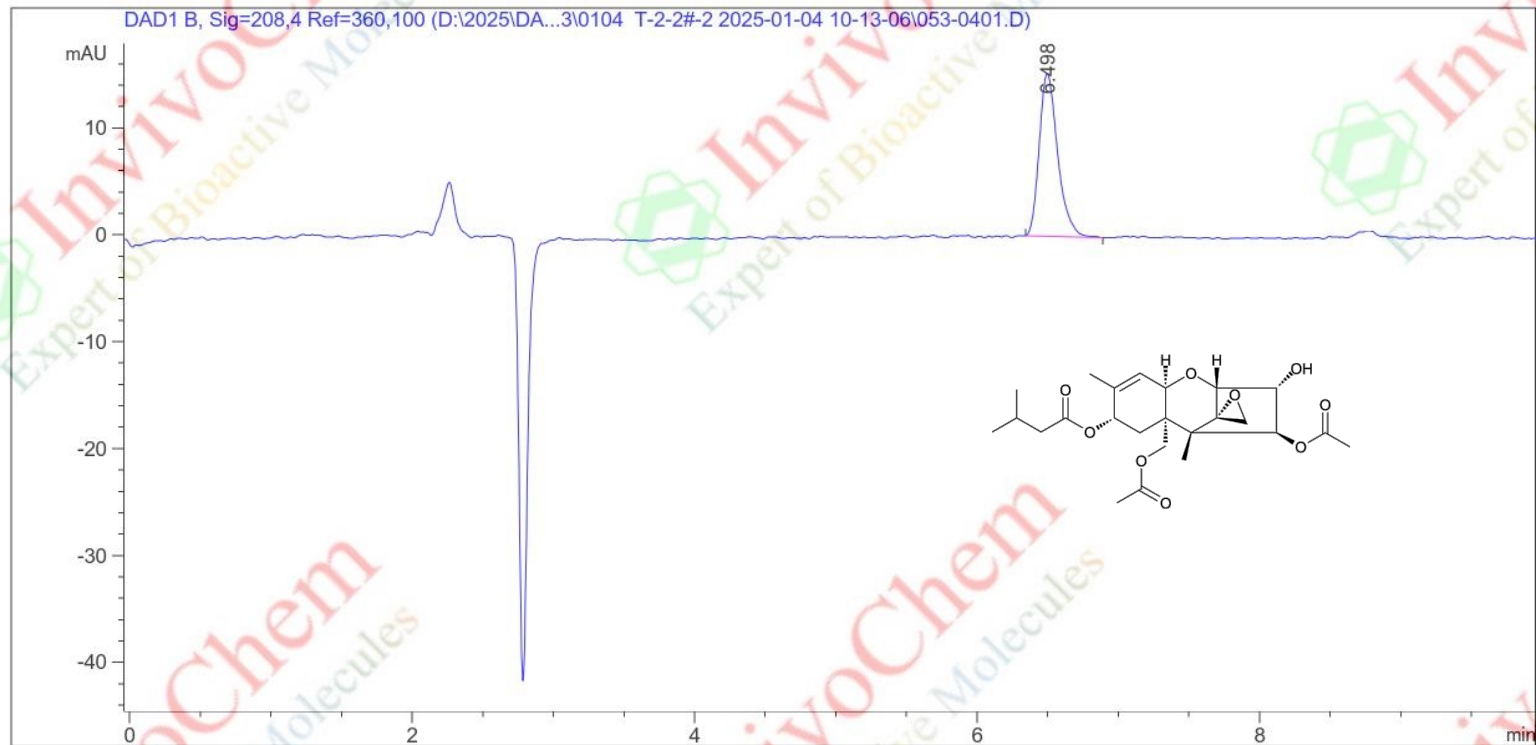


LCMS Analysis for V3167301 T-2 Toxin

Data File D:\2025\DATA\01\0104 T-2-2#-2 2025-01-04 10-13-06\053-0401.D

Sample Name: T-2-100PPM

=====
Acq. Operator : Seq. Line : 4
Acq. Instrument : Instrument 1 Location : Vial 53
Injection Date : 1/03/2025 10:49:46 AM Inj : 1
Inj Volume : 5.0 µl
Acq. Method : D:\2025\DATA\04\0103 T-2-2#-2 2025-01-03 10-13-06\T-2
METHOD08.M
Last changed : 1/03/2025 5:25:00 PM
Analysis Method : C:\CHEM32\1\METHODS\HT-2 METHOD08.M
Last changed : 1/4/2025 10:50:21 AM
(modified after loading)



Area Percent Report

Sorted By : Signal
Multiplier: : 1.0000
Dilution: : 1.0000
Use Multiplier & Dilution Factor with ISTDs

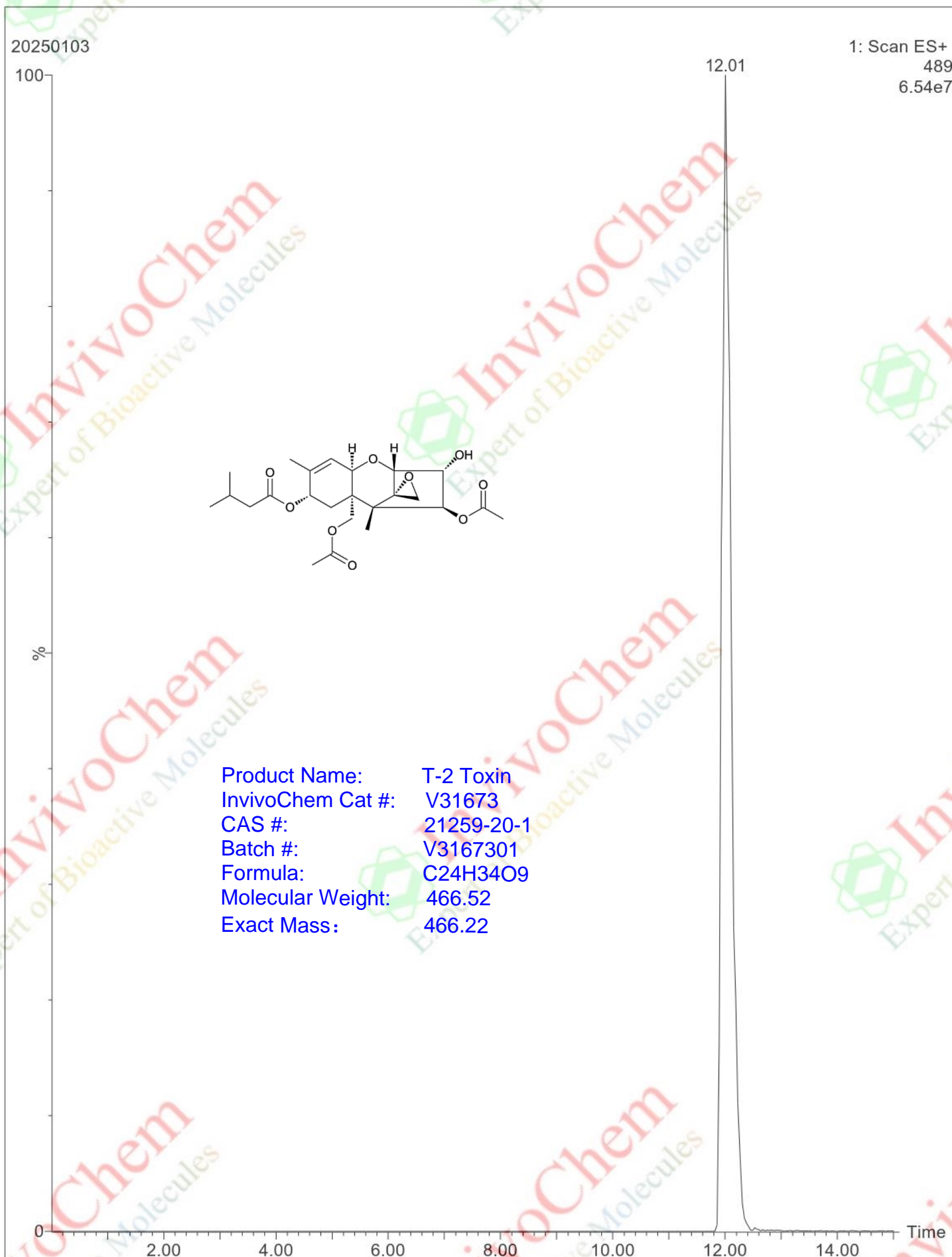
Product Name: T-2 Toxin
InvivoChem Cat #: V31673
CAS #: 21259-20-1
Batch #: V3167301
Formula: C24H34O9
Molecular Weight: 466.52

Signal 1: DAD1 B, Sig=208,4 Ref=360,100

Peak #	RetTime [min]	Type	Width [min]	Area [mAU*s]	Height [mAU]	Area %
1	6.498	BB	0.1375	137.81061	15.23371	100.0000

Totals : 137.81061 15.23371

LCMS Analysis for V3167301 T-2 Toxin



LCMS Analysis for V3167301 T-2 Toxin

