

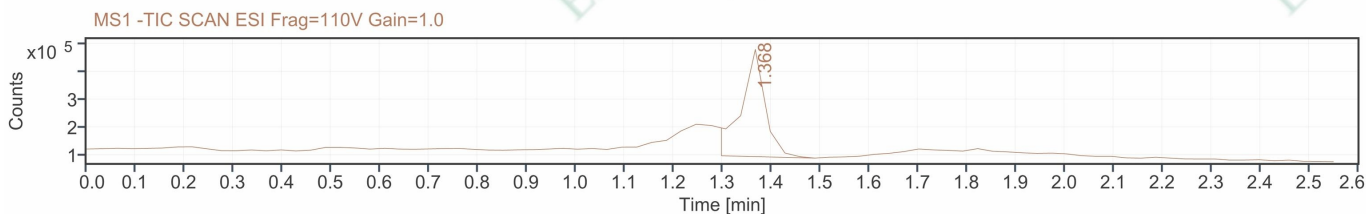
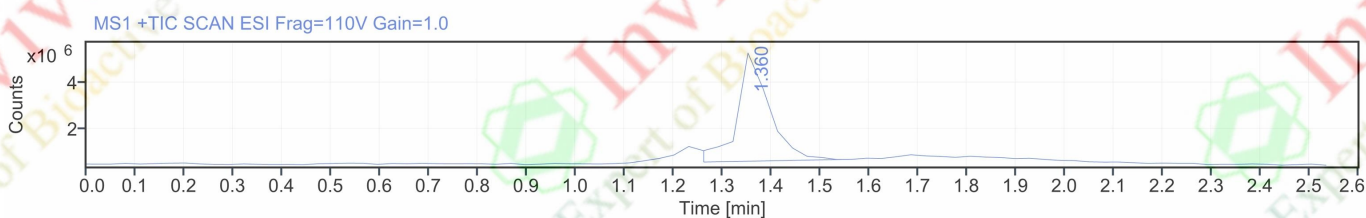
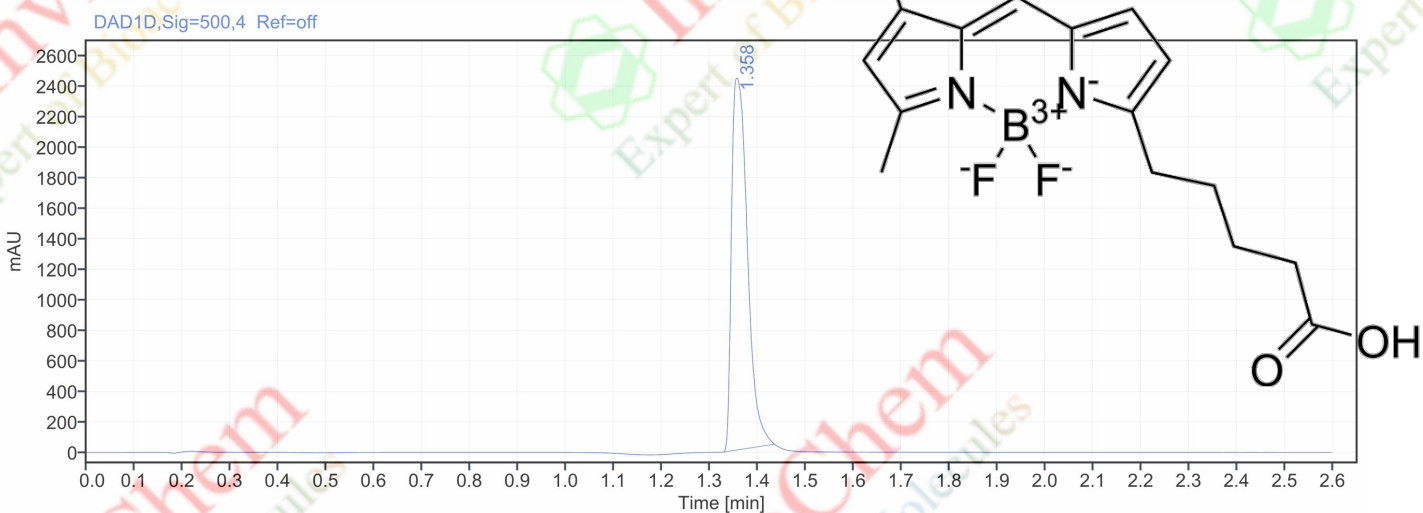
LCMS Report



Agilent Technologies

Sequence Name:	2024-12-26 16-26-09+08-00	Project Name:	LCMS
Data file:	BODIPY-C5.dx	Operator :	SYSTEM (SYSTEM)
Sample name:	BODIPY-C5	Acquired on:	2024-12-26 16:31:25+08:00
Instrument:	LCMS	Location:	P1-E4
Inj. volume:	0.500		
Acq. method:	UPLC.amx		
Processing method:	LCMS.pmx		

Column:		Serial number:	
Diameter:	0	Length	
		Void time:	



Product Name:	BODIPY FL C5
InvivoChem Cat #:	V42973
CAS #:	217075-24-6
Batch #:	V4297301
Formula:	C ₁₆ H ₁₈ BN ₂ O ₂ F ₂ ·H ⁺
Molecular Weight:	320.142

LCMS Report



Agilent Technologies

Signal: DAD1D,Sig=500,4 Ref=off

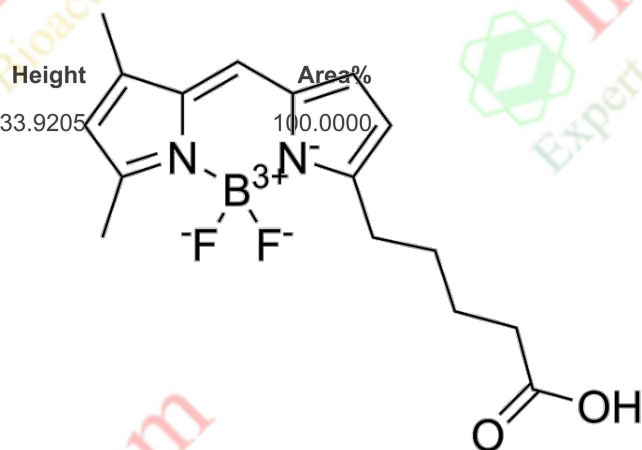
RT [min]	Width [min]	Area	Height	Area%
1.358	0.1097	5616.8411	2437.7344	100.0000
	Max	5616.8411		

Signal: MS1 +TIC SCAN ESI Frag=110V Gain=1.0

RT [min]	Width [min]	Area	Height	Area%
1.360	0.2856	21149297.1020	4794903.5922	100.0000
	Max	21149297.1020		

Signal: MS1 -TIC SCAN ESI Frag=110V Gain=1.0

RT [min]	Width [min]	Area	Height	Area%
1.368	0.1906	1307743.2202	385933.9205	100.0000
	Max	1307743.2202		



Product Name:	BODIPY FL C5
InvivoChem Cat #:	V42973
CAS #:	217075-24-6
Batch #:	V4297301
Formula:	C ₁₆ H ₁₈ BN ₂ O ₂ F ₂ ·H ⁺
Molecular Weight:	320.142

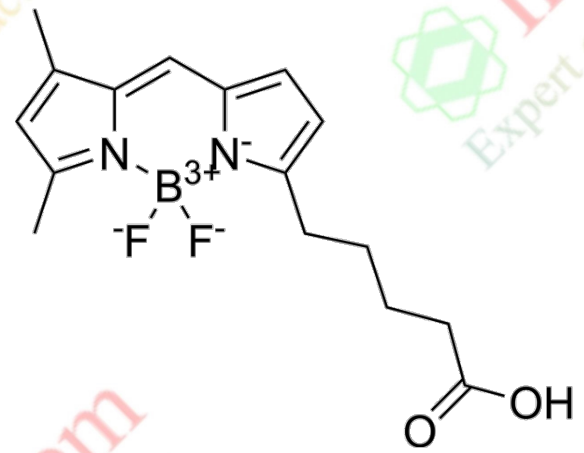
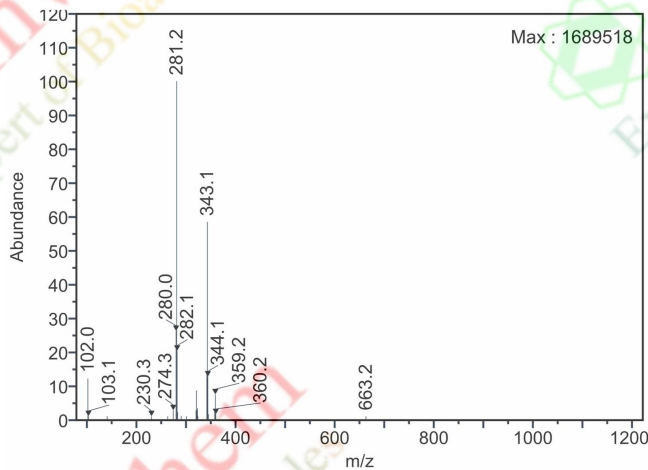


Peak Details (Area Percent at least 1%)

Signal Description : MS1 +TIC SCAN ESI Frag=110V Gain=1.0

Peak RT : 1.36 min

Area % : 100.00%



Product Name:	BODIPY FL C5
InvivoChem Cat #:	V42973
CAS #:	217075-24-6
Batch #:	V4297301
Formula:	C ₁₆ H ₁₈ BN ₂ O ₂ F ₂ ·H ⁺
Molecular Weight:	320.142

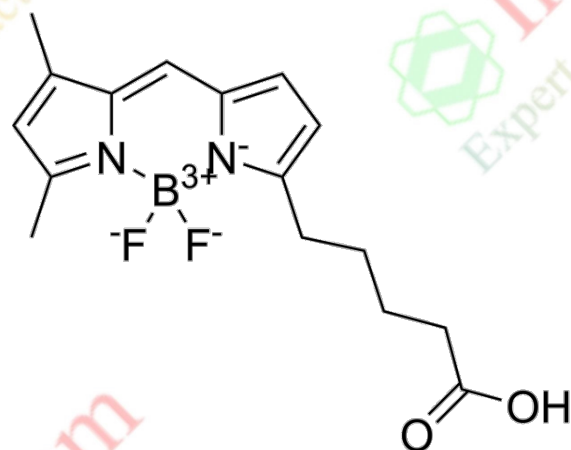
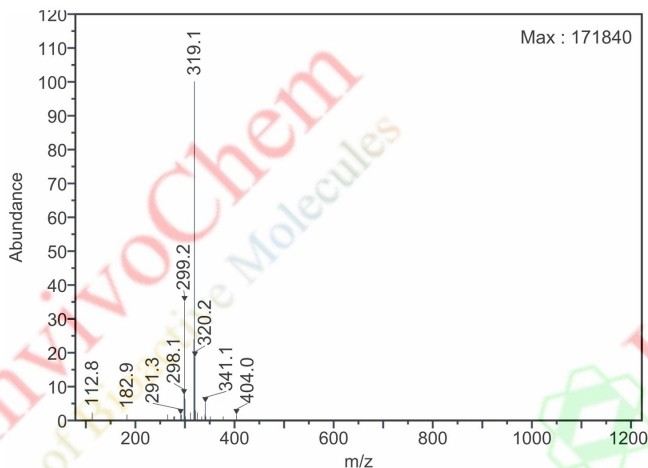
LCMS Report



Agilent Technologies

Signal Description : MS1 -TIC SCAN ESI Frag=110V Gain=1.0

Peak RT : 1.368 min **Area % :** 100.00%



Product Name:	BODIPY FL C5
InvivoChem Cat #:	V42973
CAS #:	217075-24-6
Batch #:	V4297301
Formula:	C ₁₆ H ₁₈ BN ₂ O ₂ F ₂ ·H ⁺
Molecular Weight:	320.142