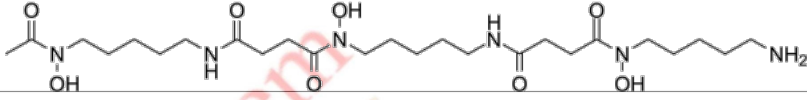
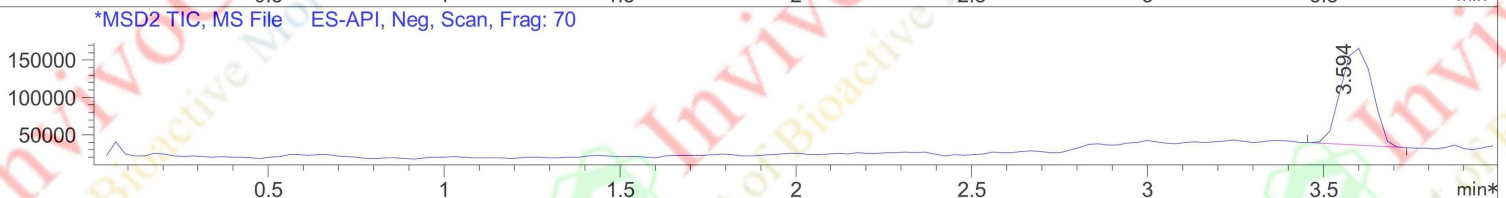
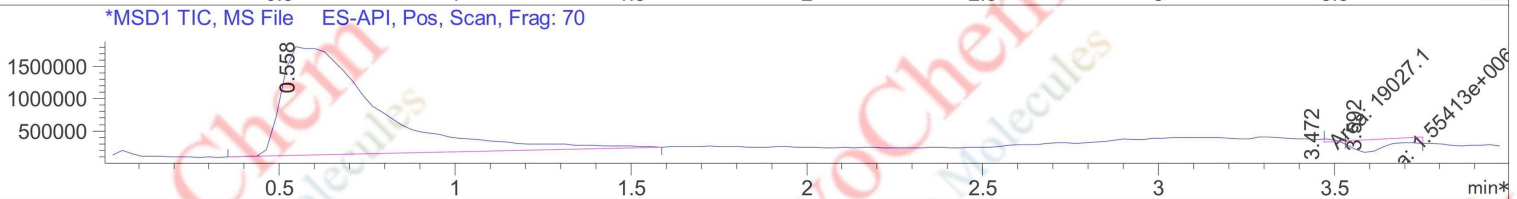
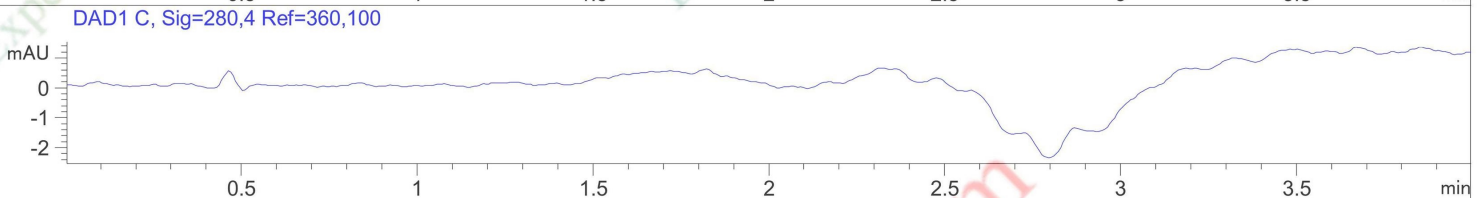
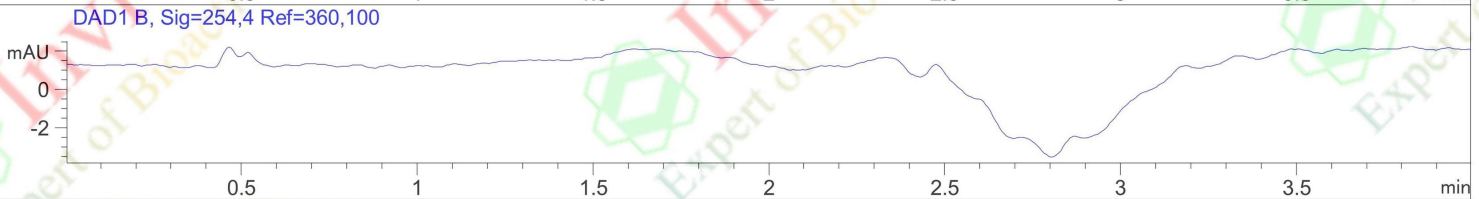
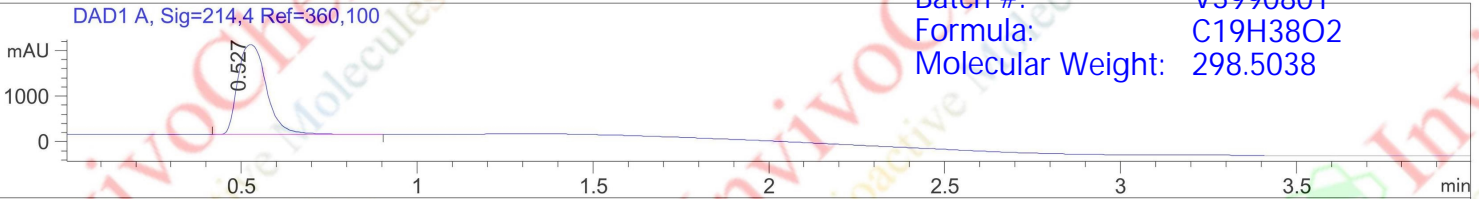


File ..\02 2025-05-20 09-24-26\OnlineEdited--103.D Tgt Mass (EZ):  
 Injection Date : 20 May 24 6:11 pm +0800 Seq. Line : 103  
 Sample Name : 20250520-QC564044-943125 Location : 80  
 Acq. Operator : SYSTEM Inj : 1  
 Spec. Reported : MS Integration Inj Volume : 1 ul  
 Acq. Method : D:\Chem32\1\Data\MAFANGYA\02 2025-05-20 09-24-26\20171123--FA02-M.M  
 Analysis Method : D:\Chem32\1\Data\MAFANGYA\02 2025-05-20 09-24-26\20171123--FA02-M.M  
 Sample Info :  
 Method Info : **LCMS Analysis for V3990801 Nonadecanoic acid**



Product Name: Nonadecanoic acid  
 InvivoChem Cat #: V39908  
 CAS #: 646-30-0  
 Batch #: V3990801  
 Formula: C19H38O2  
 Molecular Weight: 298.5038



Integration Results for DAD1 A, Sig=214,4 Ref=360,100

RetTim	Width	Area	Height	Area%	MS (+)	MS (-)
0.53	0.09	11233.22	1971.43	100.00	*** 15	113

Integration Results for DAD1 B, Sig=254,4 Ref=360,100

RetTim	Width	Area	Height	Area%	MS (+)	MS (-)

Integration Results for DAD1 C, Sig=280,4 Ref=360,100

RetTim	Width	Area	Height	Area%	MS (+)	MS (-)

Integration Results for MSD1 TIC, MS File

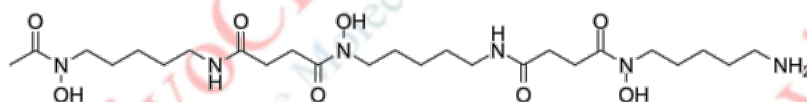
RetTim	Width	Area	Height	Area%	MS (+)	MS (-)
0.56	0.23	31455530.00	1720790.63	95.24	157	-
3.47	0.00	19027.07	48281.27	0.06	101	-

3.59 0.14 1554125.88 189404.02 4.71 101 -

## LCMS Analysis for V3990801 Nonadecanoic acid

Integration Results for MSD2 TIC, MS File

RetTim	Width	Area	Height	Area%	MS (+)	MS (-)
3.59	0.11	810941.25	130271.23	100.00	-	297

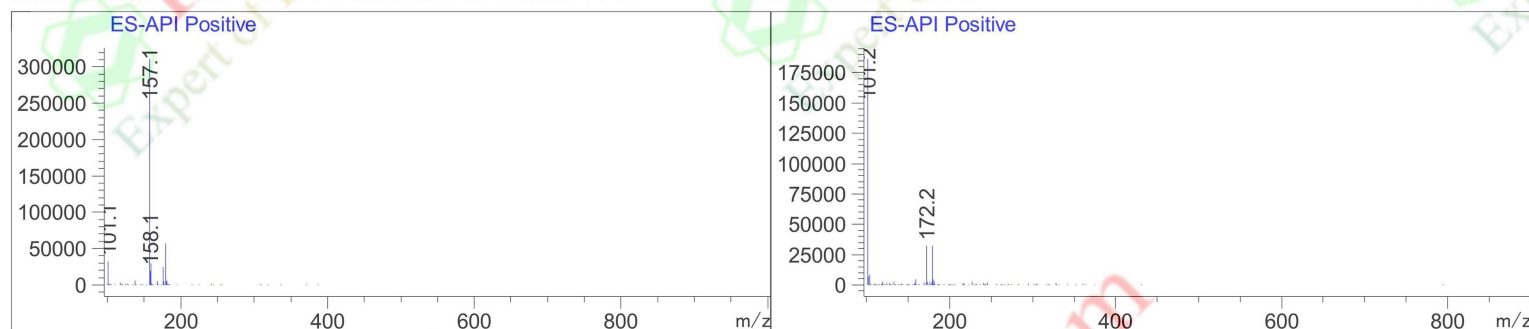


Product Name: Nonadecanoic acid  
InvivoChem Cat #: V39908  
CAS #: 646-30-0  
Batch #: V3990801  
Formula: C<sub>19</sub>H<sub>38</sub>O<sub>2</sub>  
Molecular Weight: 298.5038

## LCMS Analysis for V3990801 Nonadecanoic acid

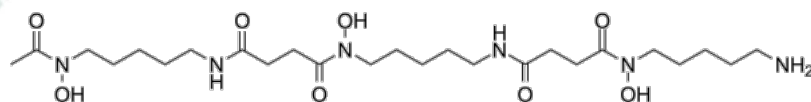
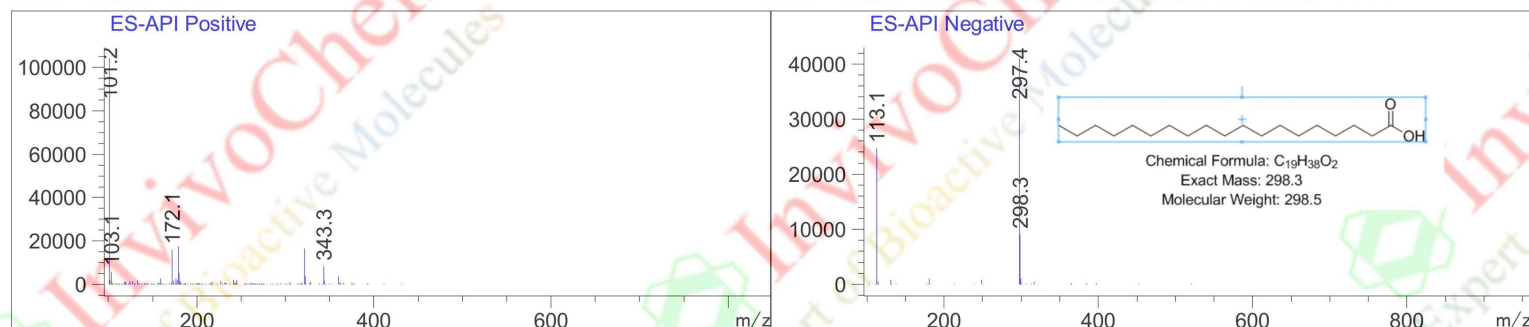
Ret. Time: 0.56 &lt;&lt;&lt; POSITIVE SPECTRA &gt;&gt;&gt;

Ret. Time: 3.47



Ret. Time: 3.59

Ret. Time: 3.59 &lt;&lt;&lt; NEGATIVE SPECTRA &gt;&gt;&gt;



Product Name: Nonadecanoic acid

InvivoChem Cat #: V39908

CAS #: 646-30-0

Batch #: V3990801

Formula: C<sub>19</sub>H<sub>38</sub>O<sub>2</sub>

Molecular Weight: 298.538