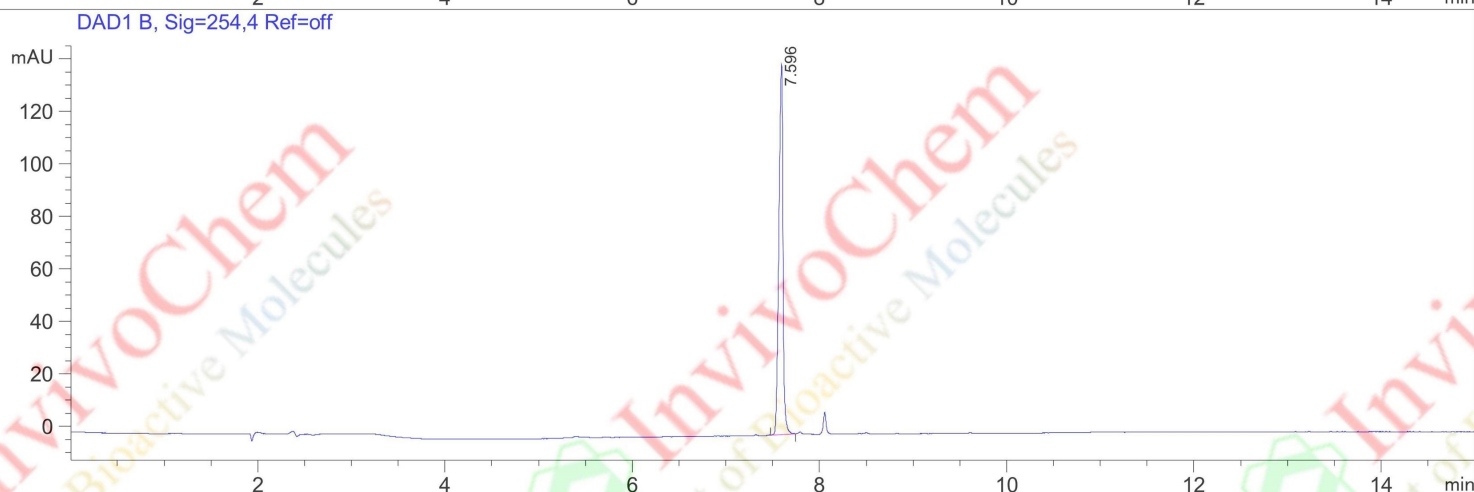
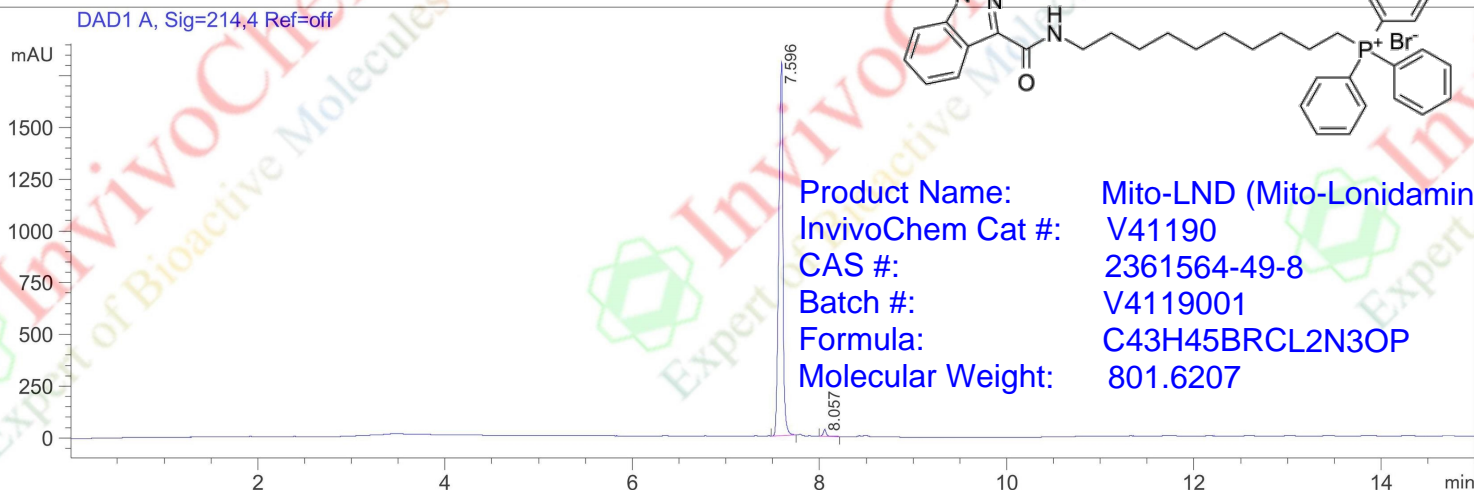
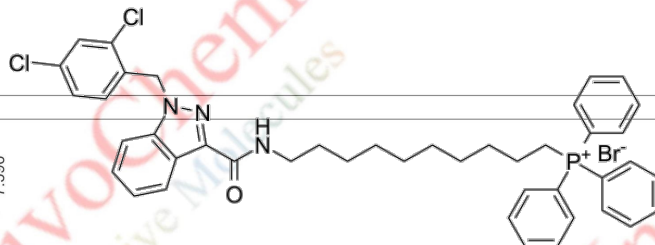


HPLC Analysis for V4119001 Mito-LND (Mito-Lonidamine)

Spec. Reported : MS Integration Inj Volume : 0.5 ul
 Acq. Method : D:\METHODS\2-HPLC-15MIN.M
 Analysis Method : D:\METHODS\2-HPLC-15MIN.M
 Sample Info : Easy-Access Method: '2-HPLC.M'
 Method Info : Mobile Phase: A: water(0.01%TFA) B: ACN(0.01%TFA)
 Gradient: 5% increase to 95%B within 7.5 min, 95%B for 7.5 min.
 Flow Rate: 1.0ml/min
 Column: Sunfire C18, 4.6*150mm, 3.5um
 Column Temperature: 45 C



Integration Results for DAD1 A, Sig=214,4 Ref=off

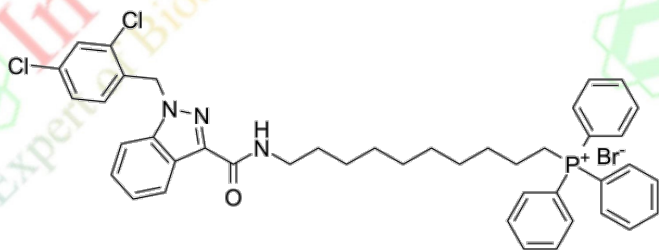
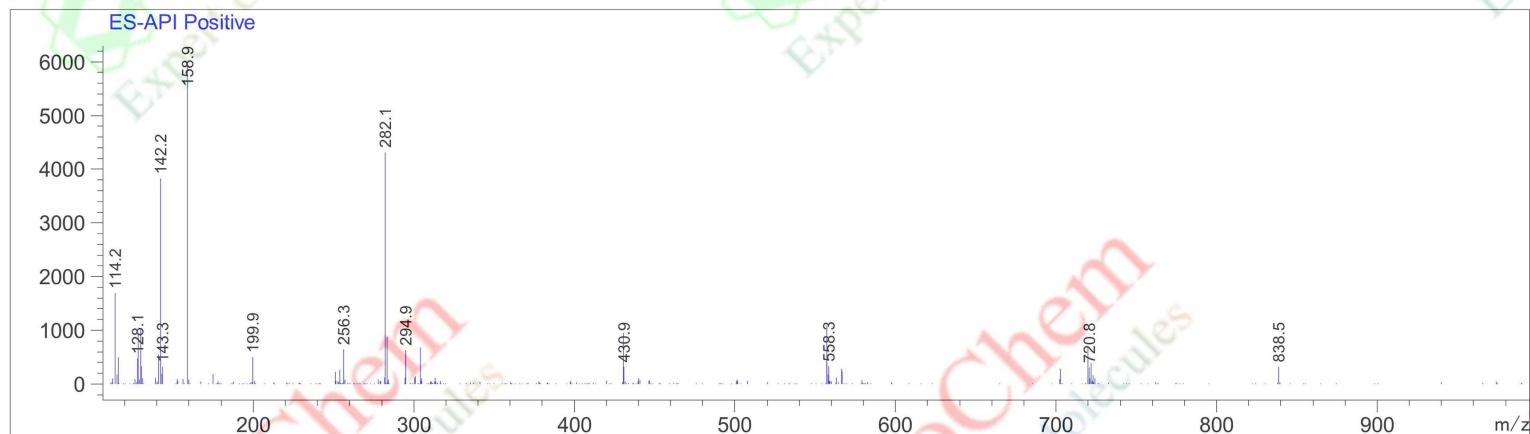
RetTim	Width	Area	Height	Area%
7.60	0.05	5555.74	1805.36	98.71
8.06	0.03	72.79	33.41	1.29

Integration Results for DAD1 B, Sig=254,4 Ref=off

RetTim	Width	Area	Height	Area%
7.60	0.05	428.67	140.97	100.00

HPLC Analysis for V4119001 Mito-LND (Mito-Lonidamine)

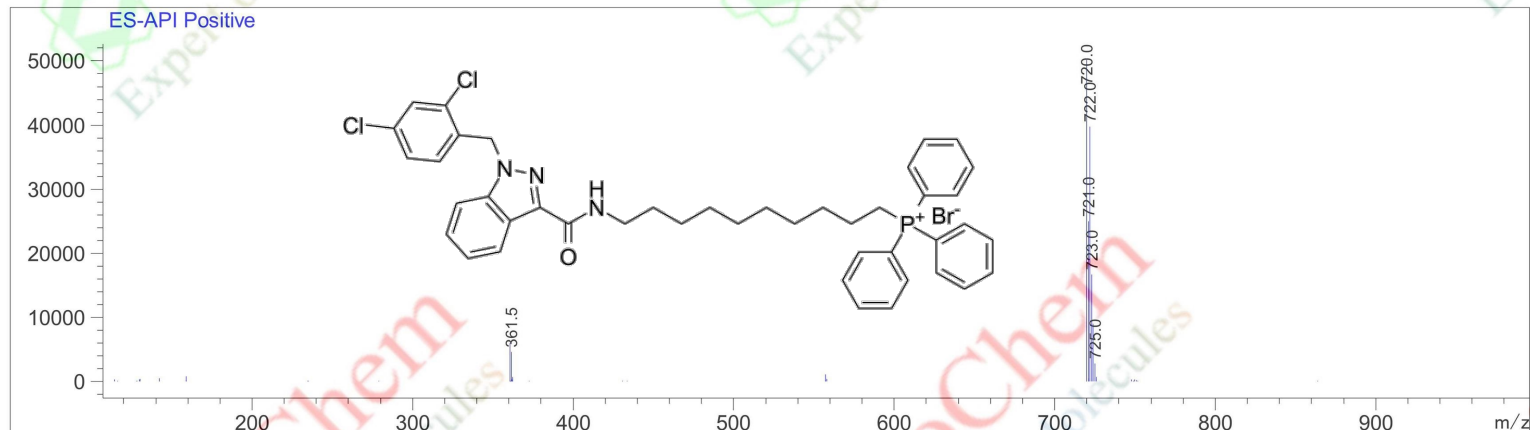
Ret. Time: 2.42



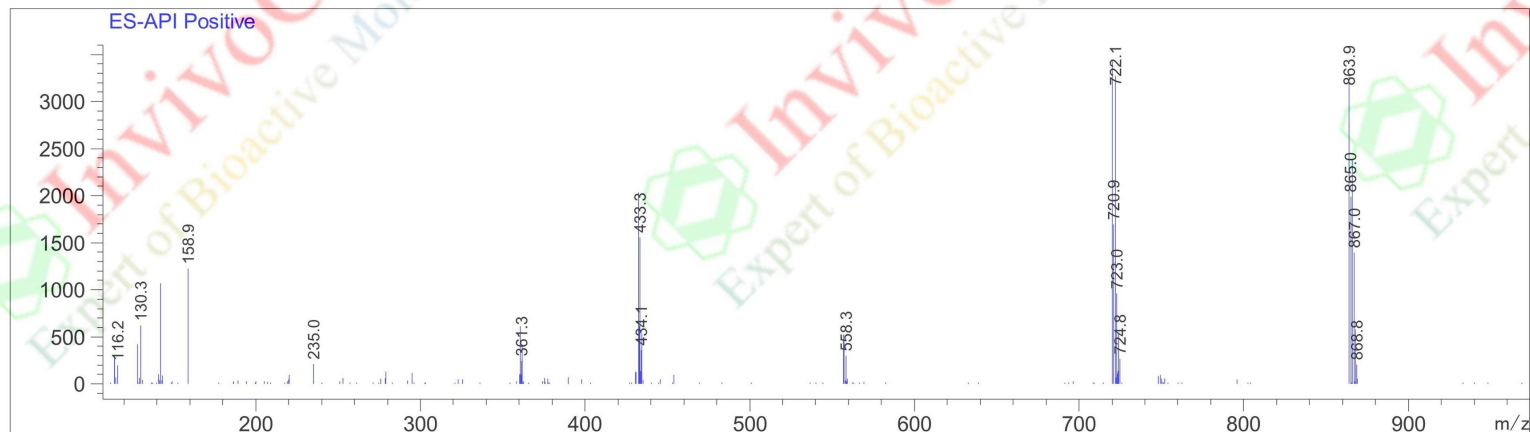
Product Name: Mito-LND (Mito-Lonidamine)
InvivoChem Cat #: V41190
CAS #: 2361564-49-8
Batch #: V4119001
Formula: C₄₃H₄₅BRCL₂N₃OP
Molecular Weight: 801.6207

HPLC Analysis for V4119001 Mito-LND (Mito-Lonidamine)

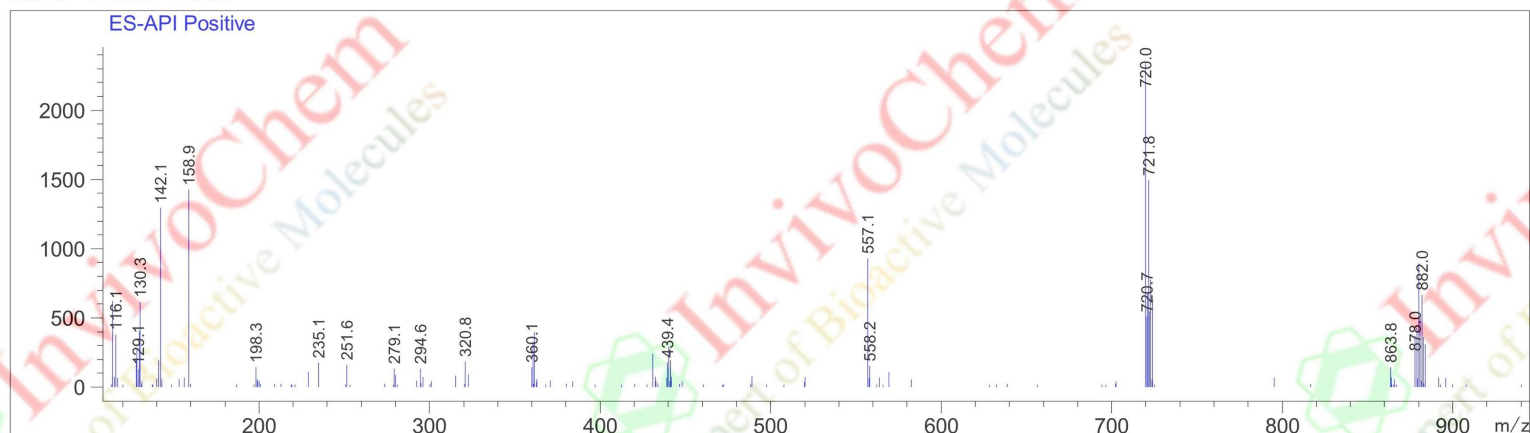
Ret. Time: 1.71 <<<< POSITIVE SPECTRA >>>>



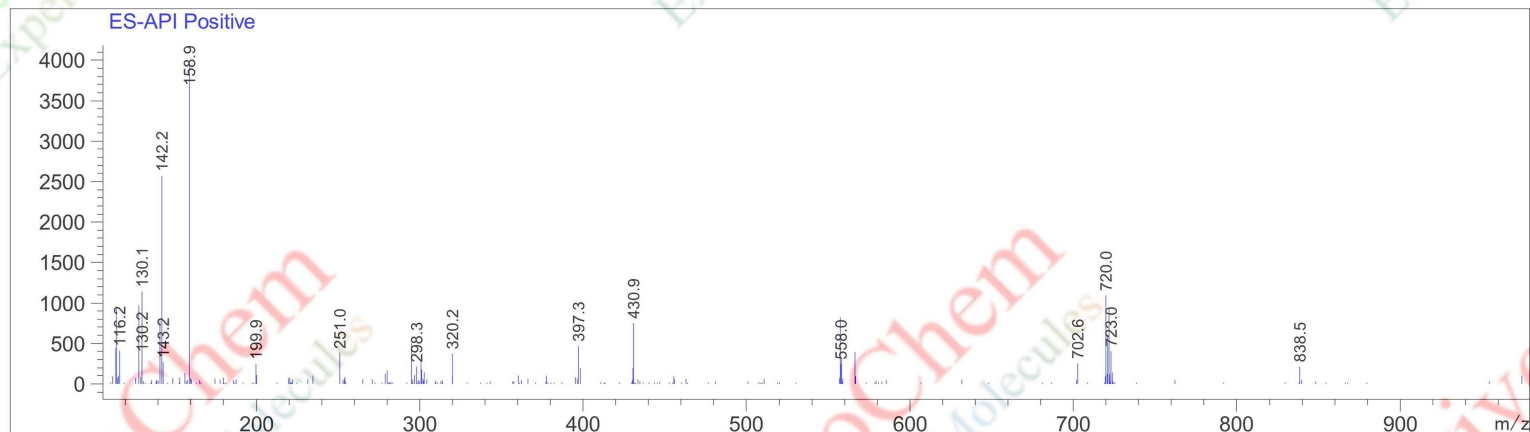
Ret. Time: 1.79



Ret. Time: 1.86

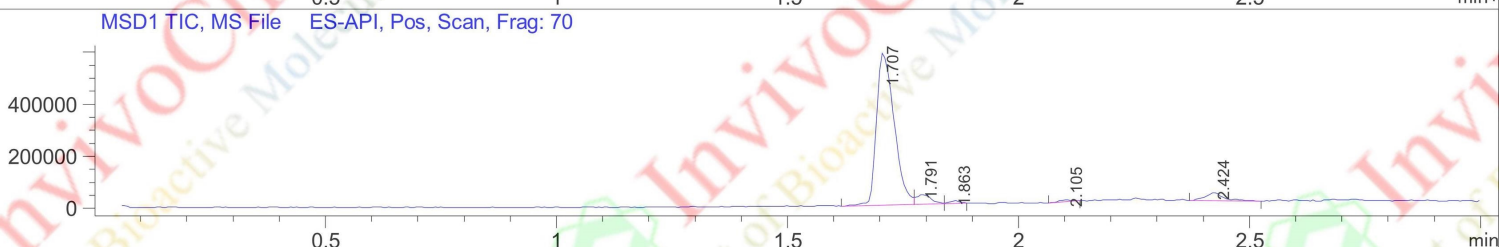
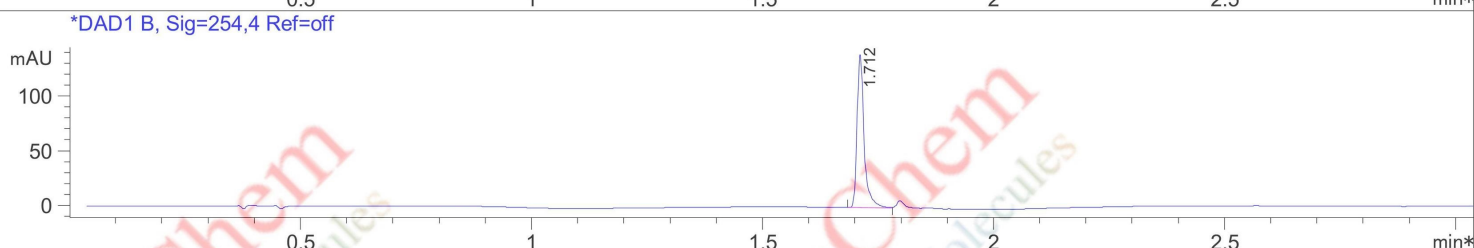
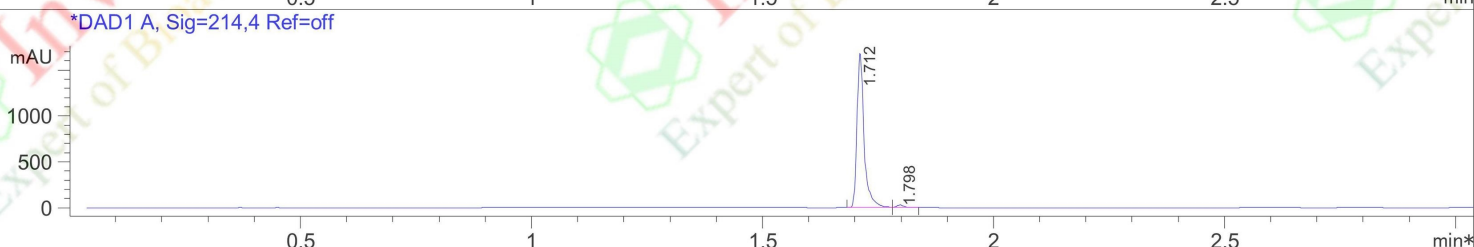
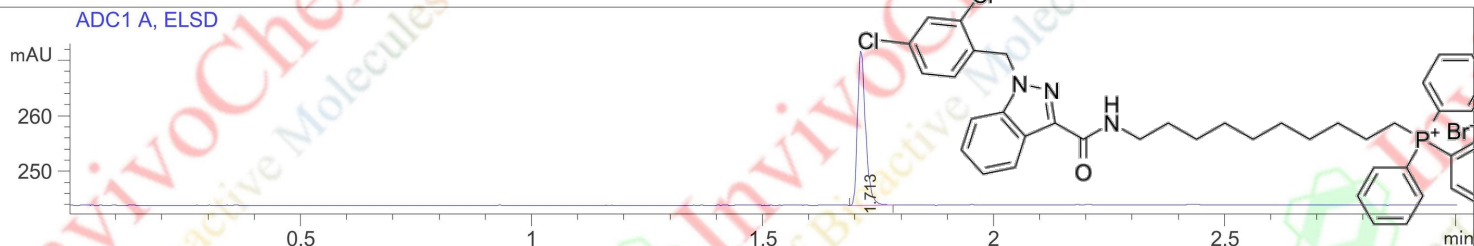


Ret. Time: 2.11



HPLC Analysis for V4119001 Mito-LND (Mito-Lonidamine)

Spec. Reported : MS Integration Inj Volume : 0.5 ul
 Acq. Method : D:\METHODS\1-POS-3MIN.M
 Analysis Method : D:\METHODS\1-POS-3MIN.M
 Sample Info : Easy-Access Method: '1-POS-3MIN'
 Method Info : Mobile Phase: A: water(0.01%TFA) B: ACN(0.01%TFA)
 Gradient: 5% increase to 95%B within 1.3 min, 95%B for 1.7 min.
 Flow Rate: 2.0ml/min
 Column:Sunfire C18,4.6*50mm,3.5um
 Column Temperature: 45 C
 Detection:UV(214,4nm) and MS(ESI,Pos mode,110 to 1000 amu)



Integration Results for ADC1 A, ELSD

RetTim	Width	Area	Height	Area%
1.71	0.02	33.98	27.95	100.00

Integration Results for DAD1 A, Sig=214,4 Ref=off

RetTim	Width	Area	Height	Area%
1.71	0.02	1805.34	1689.31	98.28
1.80	0.02	31.59	28.04	1.72

Integration Results for DAD1 B, Sig=254,4 Ref=off

RetTim	Width	Area	Height	Area%
1.71	0.02	149.11	140.84	100.00