

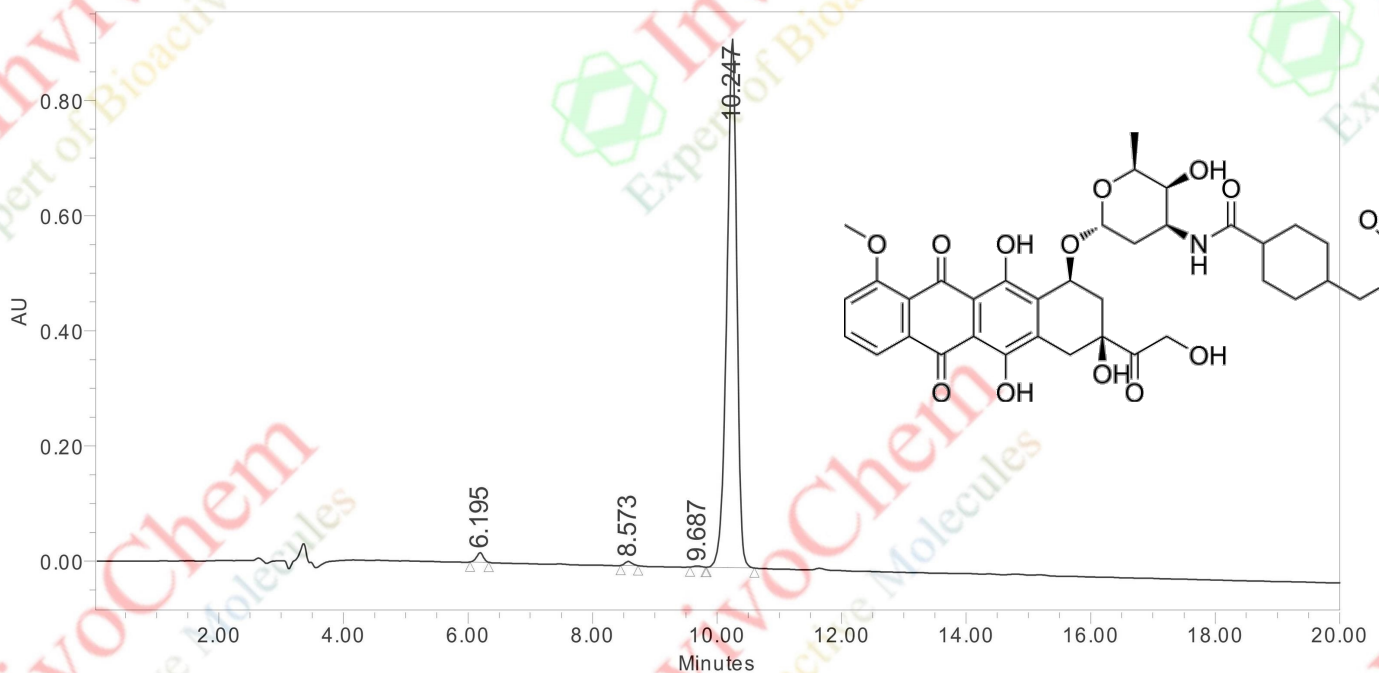
# LCMS Analysis for V2020801 Doxorubicin-SMCC

**Empower™ 3**  
SOFTWARE

## QC Report

### SAMPLE INFORMATION

Sample Name: P242712 Sample Type: Unknown Vial: 1 Injection #: 1 Injection Volume: 5.00 ul Run Time: 20.0 Minutes  Date Acquired: 1/13/2025 9:20:16 AM CST Date Processed: 1/13/2025 9:56:45 AM CST	Acquired By: System Sample Set Name: Acq. Method Set: 35_55% B in 20min Processing Method: Default Channel Name: 220.0nm Proc. Chnl. Descr.: PDA 220.0 nm (PDA 190.0 to
---	--



	RT	Area	% Height	Width (sec)	% Area
1	6.195	123040	1.71	18.000	1.18
2	8.573	56480	0.76	17.000	0.54
3	9.687	15628	0.20	15.000	0.15
4	10.247	10247740	97.33	46.000	98.13

<b>Product Name:</b> <b>InvivoChem Cat #:</b> <b>CAS #:</b> <b>Batch #:</b> <b>Formula:</b> <b>Molecular Weight:</b>	Doxorubicin-SMCC V20208 400647-59-8 V2020801 C39H42N2O14 762.75579
---	---

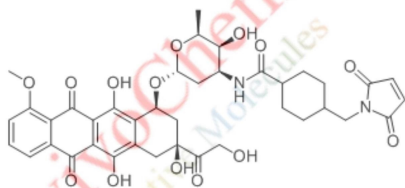
Reported by User: System  
 Report Method: QC Report  
 Report Method ID 1259  
 Page: 1 of 1

Project Name: HPLC004  
 Date Printed:  
 1/13/2025  
 9:57:14 AM PRC

# LCMS Analysis for V2020801 Doxorubicin-SMCC

20250109

P242712



Chemical Formula:  $C_{39}H_{42}N_2O_{14}$   
Exact Mass: 762.26  
Molecular Weight: 762.76

Product Name: Doxorubicin-SMCC  
InvivoChem Cat #: V20208  
CAS #: 400647-59-8  
Batch #: V2020801  
Formula:  $C_{39}H_{42}N_2O_{14}$   
Molecular Weight: 762.75579

