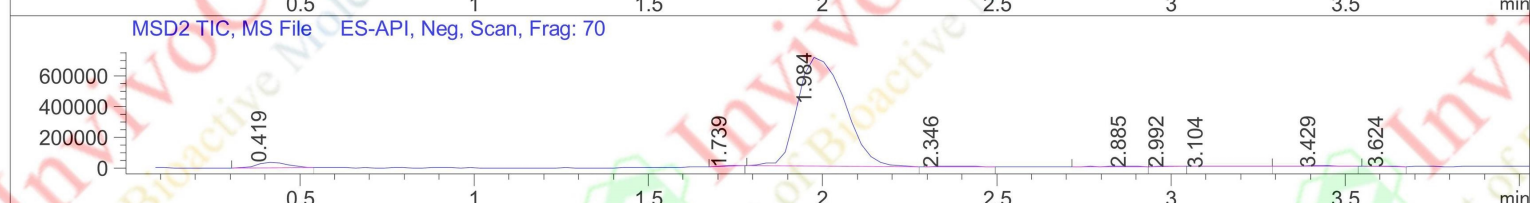
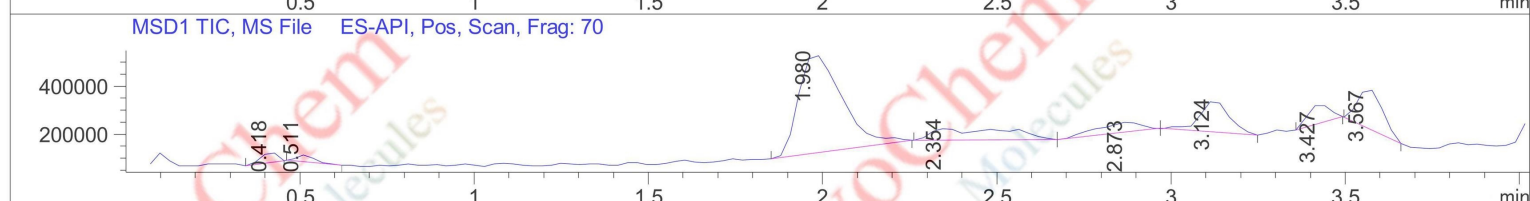
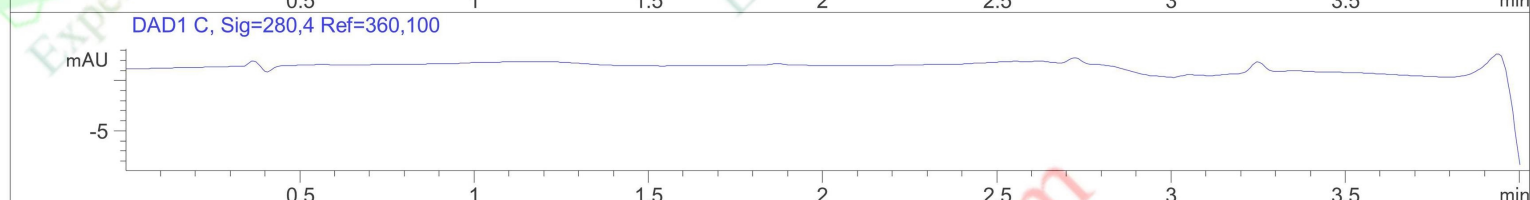
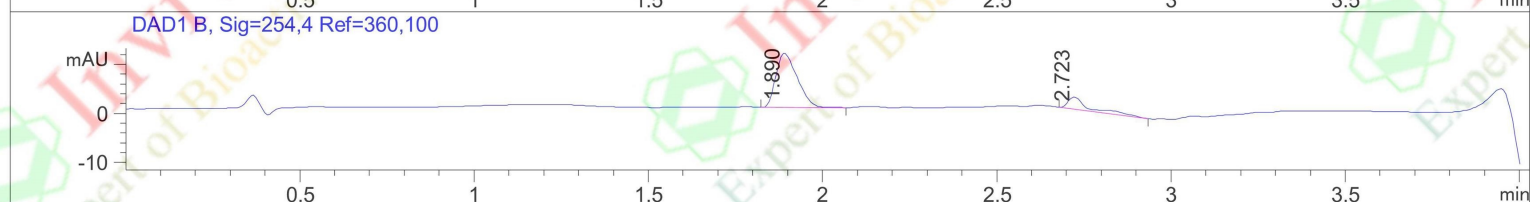
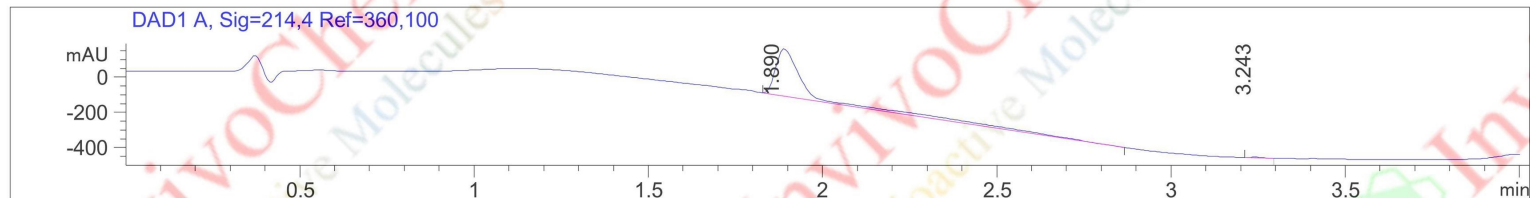


# HPLC Analysis for V6709401 Sulfo-NHS-LC-Biotin sodium

File ..\02 2021-11-29 09-18-14\OnlineEdited--051.D Tgt Mass (EZX):  
 Injection Date : 29 Nov 21 1:39 pm +0800 Seq. Line : 51  
 Sample Name : 20211129-QC276262-471443 Location : 43  
 Acq. Operator : SYSTEM Inj : 1  
 Spec. Reported : MS Integration Inj Volume : 1 ul  
 Acq. Method : D:\Chem32\1\Data\MAFANGYA\02 2021-11-29 09-18-14\20171123--FA02.M  
 Analysis Method : D:\Chem32\1\Data\MAFANGYA\02 2021-11-29 09-18-14\20171123--FA02.M  
 Sample Info :  
 Method Info :



Integration Results for DAD1 A, Sig=214,4 Ref=360,100

RetTim	Width	Area	Height	Area%	MS (+)	MS (-)
1.89	0.08	1565.21	268.30	99.39	535	533
3.24	0.04	9.57	3.80	0.61	350	113

Integration Results for DAD1 B, Sig=254,4 Ref=360,100

RetTim	Width	Area	Height	Area%	MS (+)	MS (-)
1.89	0.07	46.93	11.07	81.46	535	533
2.72	0.06	10.68	2.47	18.54	137	113

Integration Results for DAD1 C, Sig=280,4 Ref=360,100

RetTim	Width	Area	Height	Area%	MS (+)	MS (-)

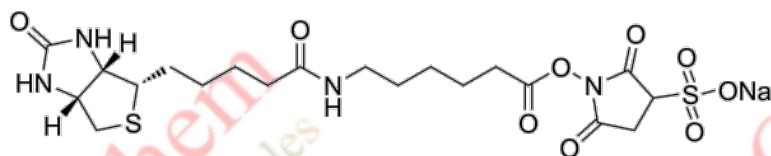
Integration Results for MSD1 TIC, MS File

RetTim	Width	Area	Height	Area%	MS (+)	MS (-)

0.42	0.06	135913.27	41368.43	1.98	137	-
0.51	0.06	98095.51	28052.47	1.43	137	-
1.98	0.13	3540451.75	408194.75	51.66	535	-
2.35	0.20	746639.94	49345.93	10.90	137	-
2.87	0.13	374287.81	40727.96	5.46	137	-
3.12	0.10	771147.00	132076.98	11.25	301	-
3.43	0.08	347869.31	79285.28	5.08	360	-
3.57	0.08	838493.50	167708.08	12.24	304	-

## Integration Results for MSD2 TIC, MS File

RetTim	Width	Area	Height	Area%	MS (+)	MS (-)
0.42	0.09	204069.25	36813.39	2.94	-	194
1.74	0.09	19324.20	5629.73	0.28	-	549
1.98	0.15	6601871.00	712020.81	95.05	-	533
2.35	0.11	29279.88	3690.96	0.42	-	113
2.89	0.12	18154.58	3187.00	0.26	-	113
2.99	0.05	11407.30	3585.28	0.16	-	113
3.10	0.12	14679.46	2068.21	0.21	-	113
3.43	0.09	36706.62	6299.13	0.53	-	113
3.62	0.06	10519.16	2939.78	0.15	-	113

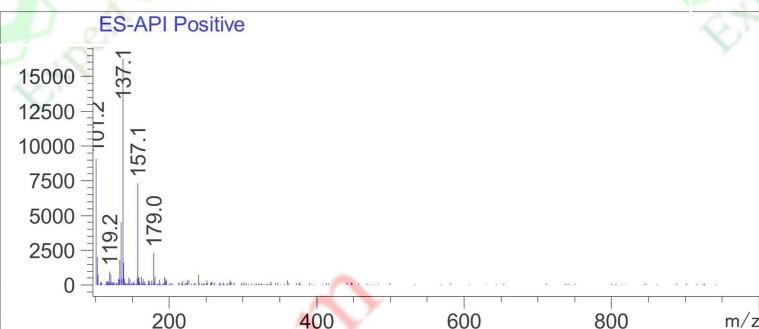
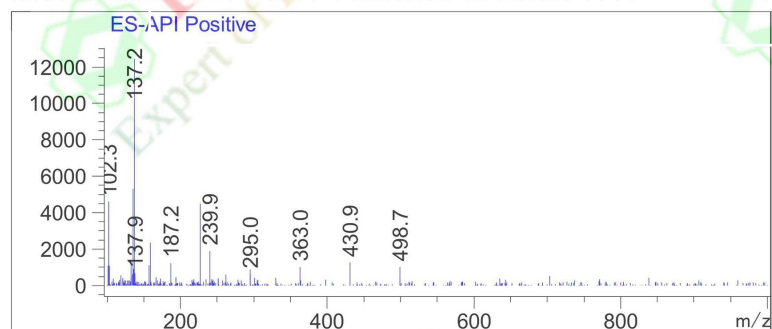


**Product Name:** Sulfo-NHS-LC-Biotin sodium  
**InvivoChem Cat #:** V67094  
**CAS #:** 191671-46-2  
**Batch #:** V6709401  
**Formula:** C<sub>20</sub>H<sub>29</sub>N<sub>4</sub>NAO<sub>9</sub>S<sub>2</sub>  
**Molecular Weight:** 556.59

## LCMS Analysis for V6709401 Sulfo-NHS-LC-Biotin sodium

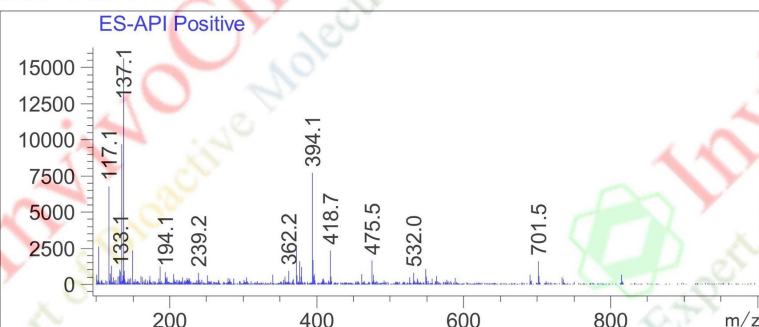
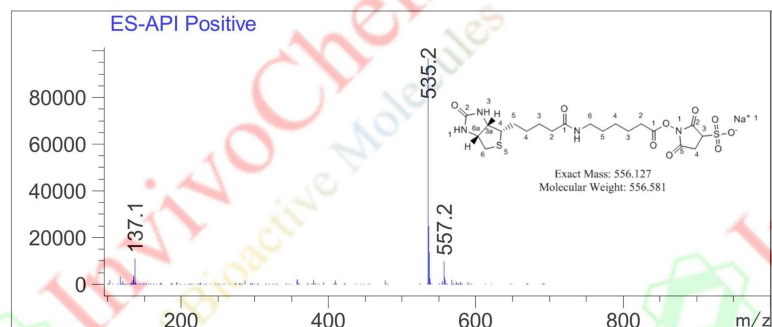
Ret. Time: 0.42 &lt;&lt;&lt;&lt; POSITIVE SPECTRA &gt;&gt;&gt;&gt;

Ret. Time: 0.51



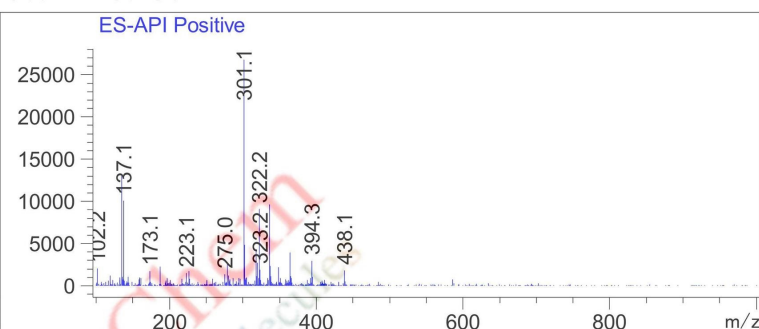
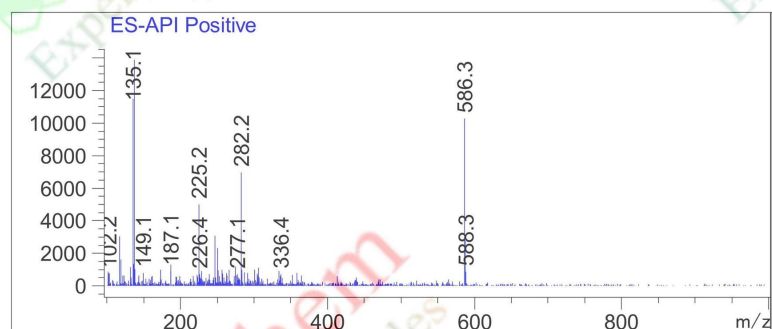
Ret. Time: 1.98

Ret. Time: 2.35



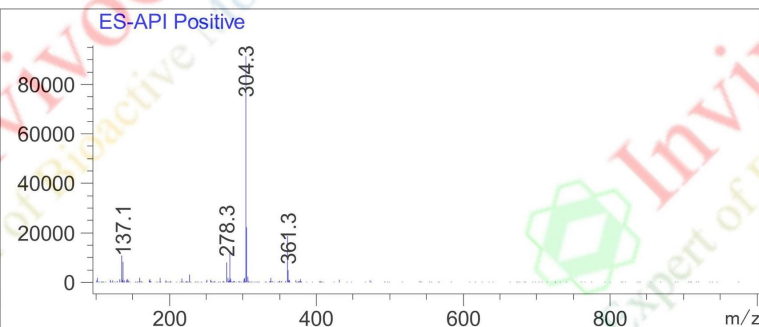
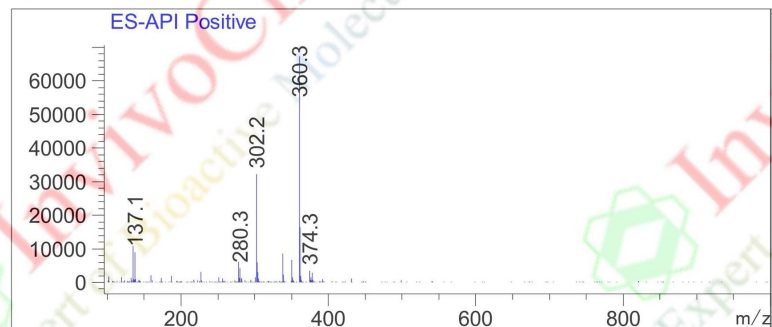
Ret. Time: 2.87

Ret. Time: 3.12



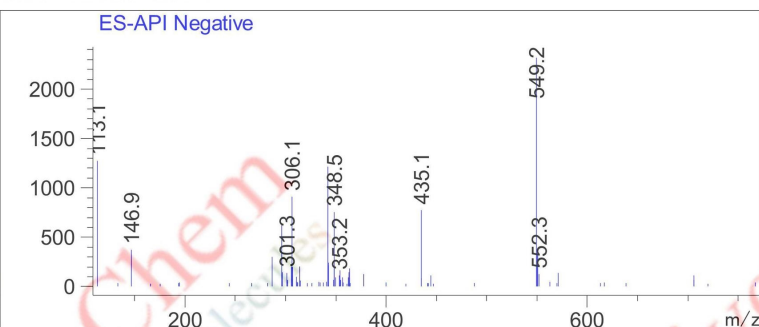
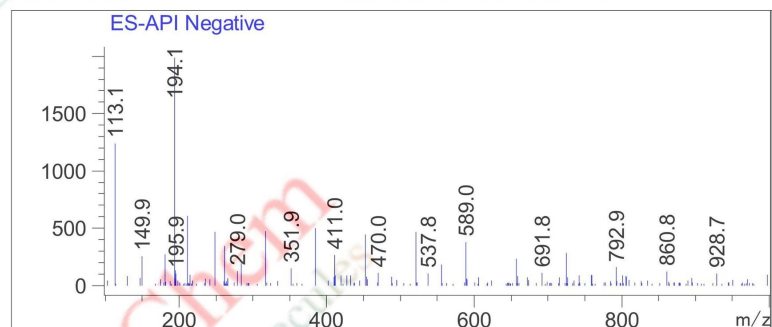
Ret. Time: 3.43

Ret. Time: 3.57

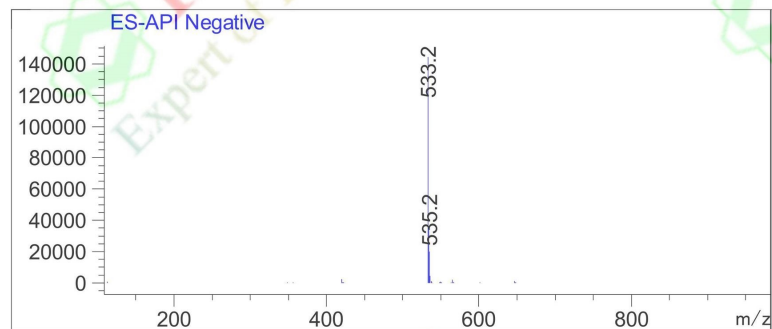


Ret. Time: 0.42 &lt;&lt;&lt;&lt; NEGATIVE SPECTRA &gt;&gt;&gt;&gt;

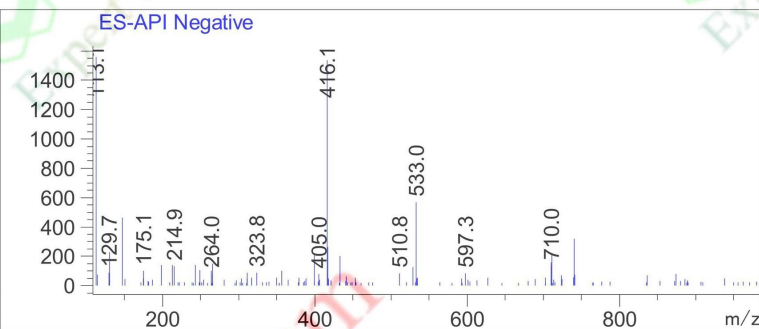
Ret. Time: 1.74



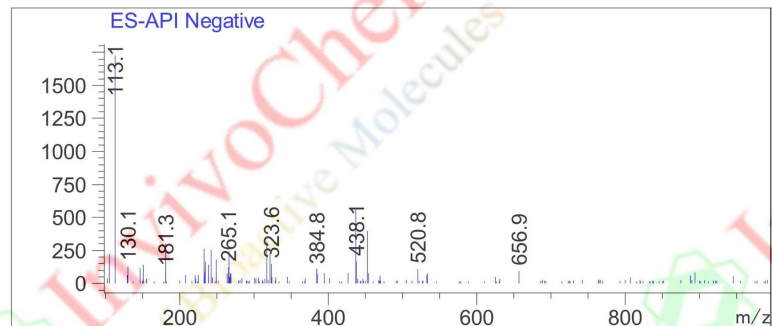
Ret. Time: 1.98



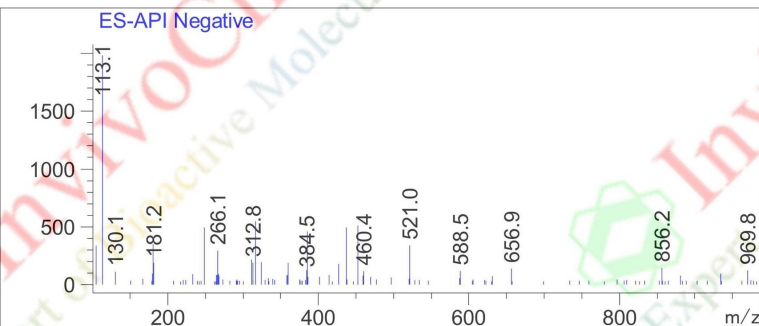
Ret. Time: 2.35



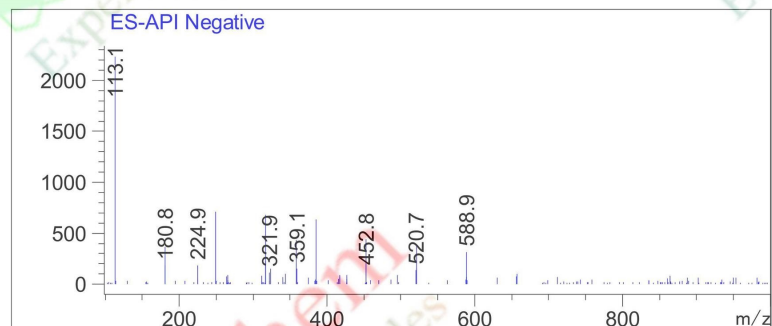
Ret. Time: 2.89



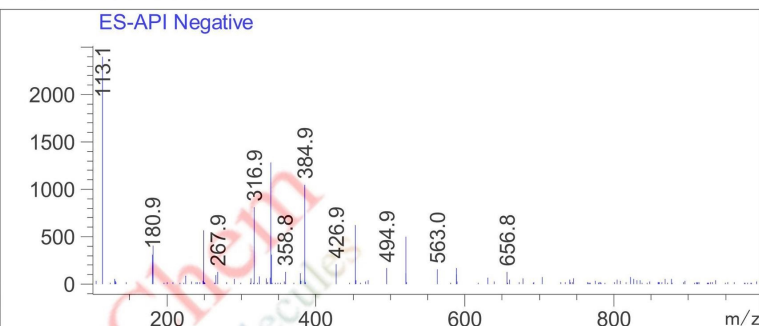
Ret. Time: 2.99



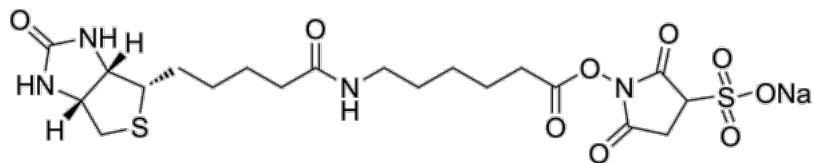
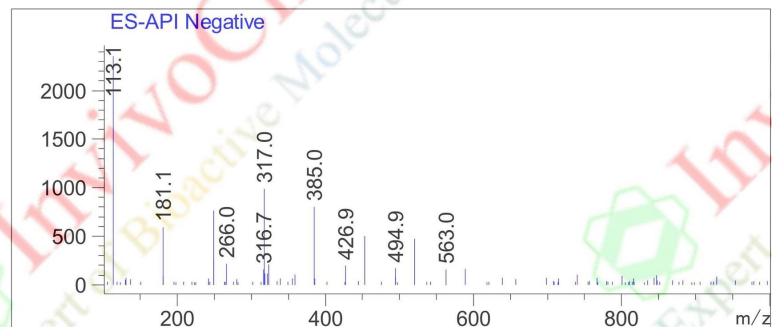
Ret. Time: 3.10



Ret. Time: 3.43



Ret. Time: 3.62



Product Name: Sulfo-NHS-LC-Biotin sodium  
 InvivoChem Cat #: V67094  
 CAS #: 191671-46-2  
 Batch #: V6709401  
 Formula: C<sub>20</sub>H<sub>29</sub>N<sub>4</sub>NaO<sub>9</sub>S<sub>2</sub>  
 Molecular Weight: 556.59

\*\*\* End of Report \*\*\*

