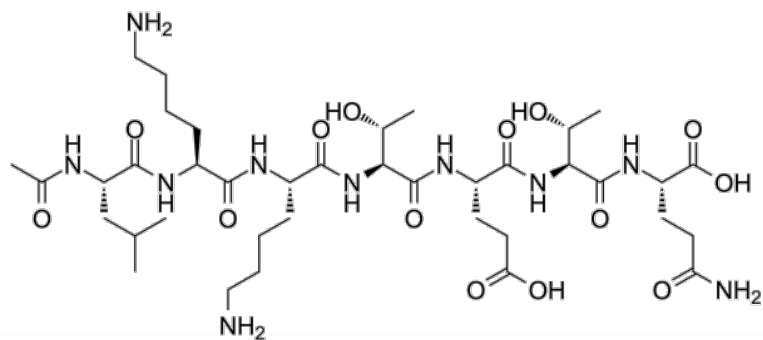
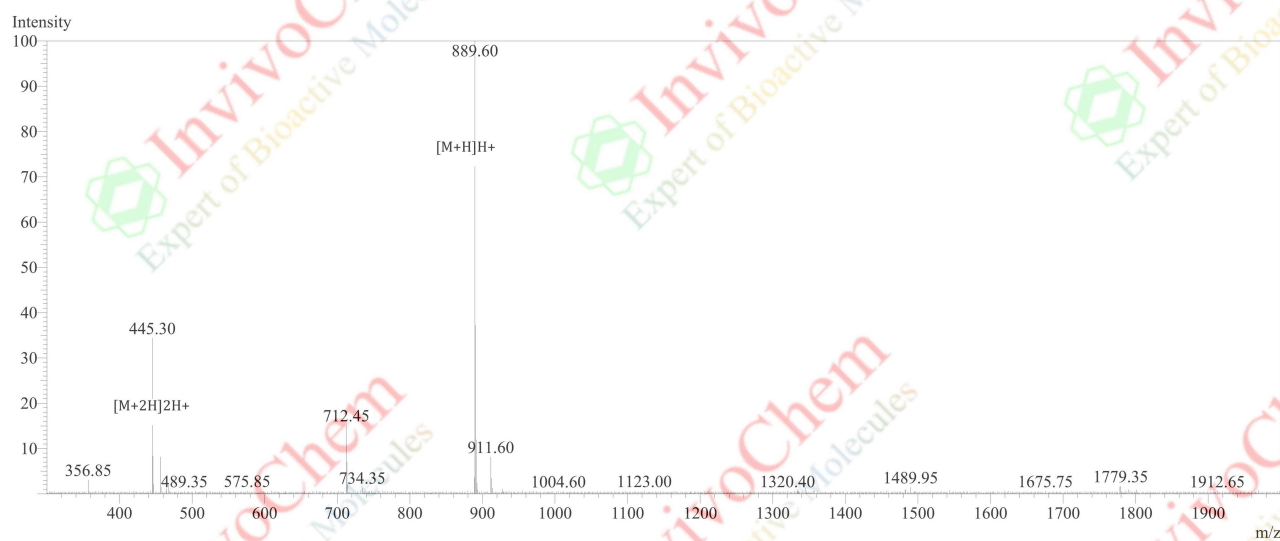


# MS Analysis for V2893501 TB500



Product Name: TB500  
InvivoChem Cat #: V28935  
CAS #: 885340-08-9  
Batch #: V2893501  
Formula: C<sub>38</sub>H<sub>68</sub>N<sub>10</sub>O<sub>14</sub>  
Molecular Weight: 889.005129814148  
Exact Mass: 888.491

MS Spectrum



### Sample Information

Dissolution method :5% HAC+8% ACN+87% H<sub>2</sub>O  
Date Acquired :2026/02/09  
Injection Volume :1ul  
Block Temp :200

Interface :ESI  
Nebulizing Gas Flow :1.50L/min  
CDL Temp :250C  
CDL Volt :0v

Prerod Bias :+4.5kv  
Detector :-1.5kv  
T.Flow :0.2ml/min  
B.conc :50% H<sub>2</sub>O/50% MEOH

Order ID :GP123876-3  
Name :N/A  
Sequence :N/A  
Lot.No :GP123876-3-0209  
Theoretical :888.49  
Observed :888.60