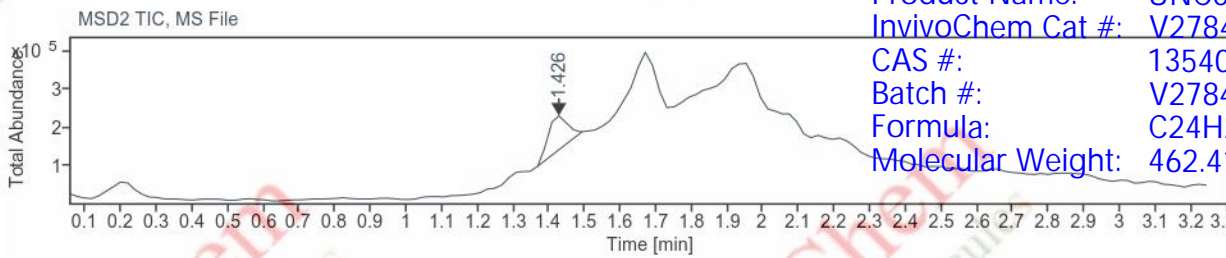
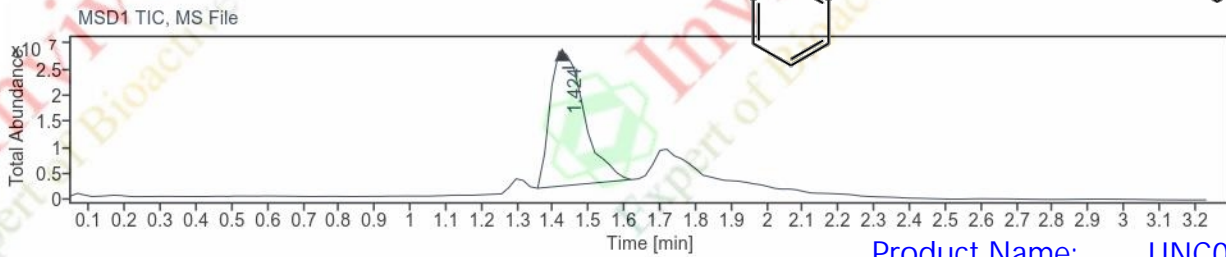
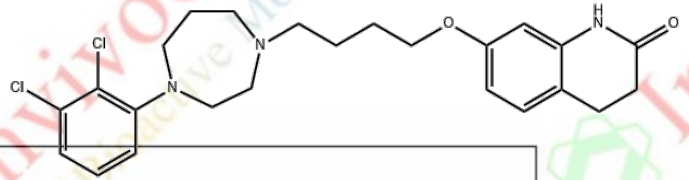


LCMS Analysis for V2784401 UNC0006

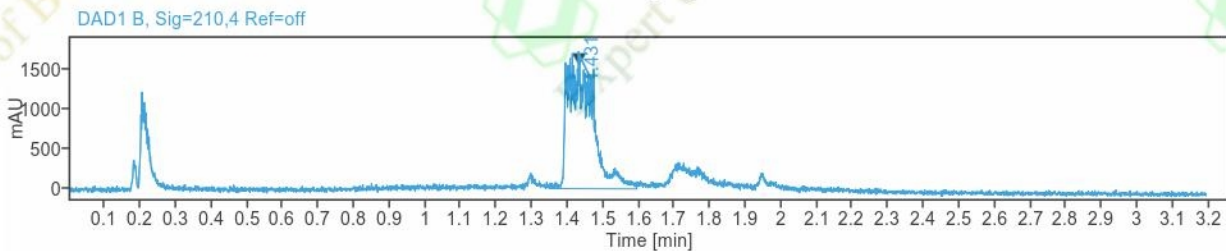
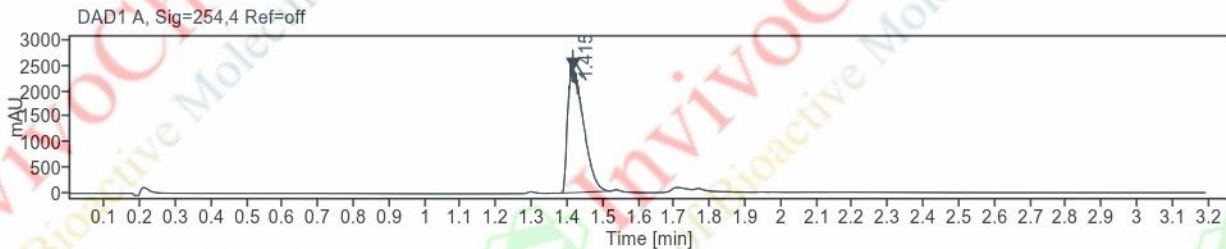
Data file: D:\LC-MS\Data\Analyst\24-06\24-06-11\LCMS-20240611-1-27754.D
Sample name: LCMS-20240611-1
Description: WalkUp method: 'LCMS100-800 210 254-XIN'
Target:

Instrument: FXS-LC-MS-04
Injection date: 2024-06-11 08:43:18+08:00
Acq. method: LCMS100-800 210 254-XIN.M
Analysis method: LCMS100-800 210 254-XIN.M
Last changed: 2024-06-27 16:00:54+08:00

Location: P2-B-06
Injection volume: 5.000
Acq. operator: admin



Product Name: UNC0006
InvivoChem Cat #: V27844
CAS #: 1354030-14-0
Batch #: V2784401
Formula: C24H29CL2N3O2
Molecular Weight: 462.415



Signal: DAD1 A, Sig=254,4 Ref=off

RT [min]	Type	Area	Height	Area%
1.42	BBA	7536.3	2396.0	100.00
	Sum	7536.3		

LCMS Analysis for V2784401 UNC0006

Signal: DAD1 B, Sig=210,4 Ref=off

RT [min]	Type	Area	Height	Area%
1.43	BBA	7893.5	1541.7	100.00
Sum		7893.5		

Signal: MSD1 TIC, MS File

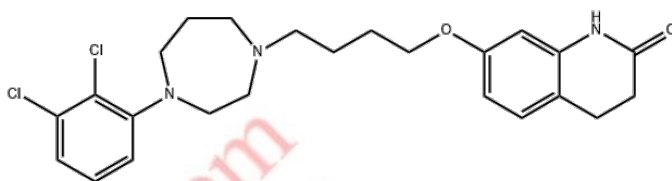
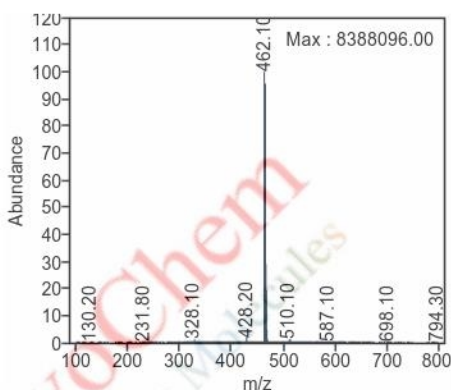
RT [min]	Type	Area	Height	Area%
1.42	BBA	171456048.0	26383474.0	100.00
Sum		171456048.0		

Signal: MSD2 TIC, MS File

RT [min]	Type	Area	Height	Area%
1.43	BBA	347580.5	88526.4	100.00
Sum		347580.5		

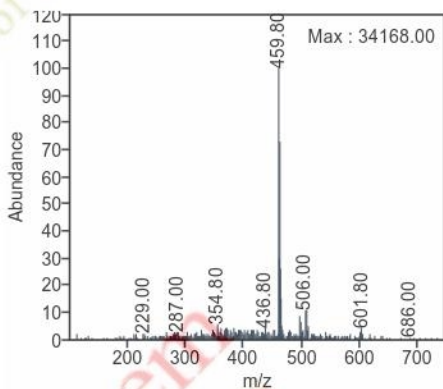
Signal: MSD1 TIC, MS File

Peak RT: 1.424



Signal: MSD2 TIC, MS File

Peak RT: 1.426



Product Name: UNC0006
InvivoChem Cat #: V27844
CAS #: 1354030-14-0
Batch #: V2784401
Formula: C₂₄H₂₉Cl₂N₃O₂
Molecular Weight: 462.415