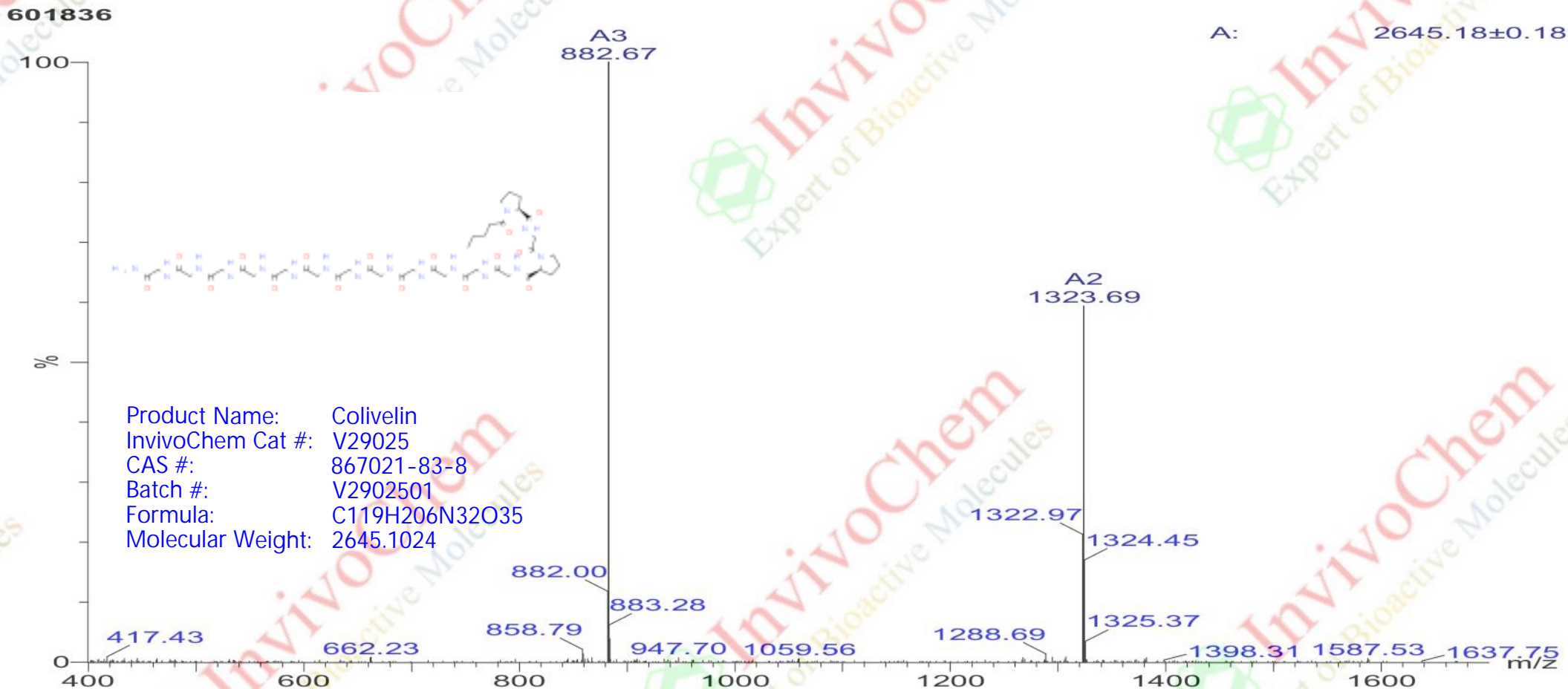


LCMS Analysis for V2902501 Colivelin

MASS SPECTROMETRY REPORT



Sample Description

Analyzed date: 2023-10-16
Analyst: SHAO
Sample: 601836
M.W.: 2645.1
Lot. No.:

Instrument

Waters 2695
Probe: ESI
Nebulizer Gas Flow: 1.5L/min
CDL: -20.0v
CDL Temp.: 250 °C
Block Temp.: 200 °C

Probe Bias: +4.5kv
Detector: 1.5kv
T. Flow: 0.5ml/min
B. Conc.: 50%H₂O/50%ACN