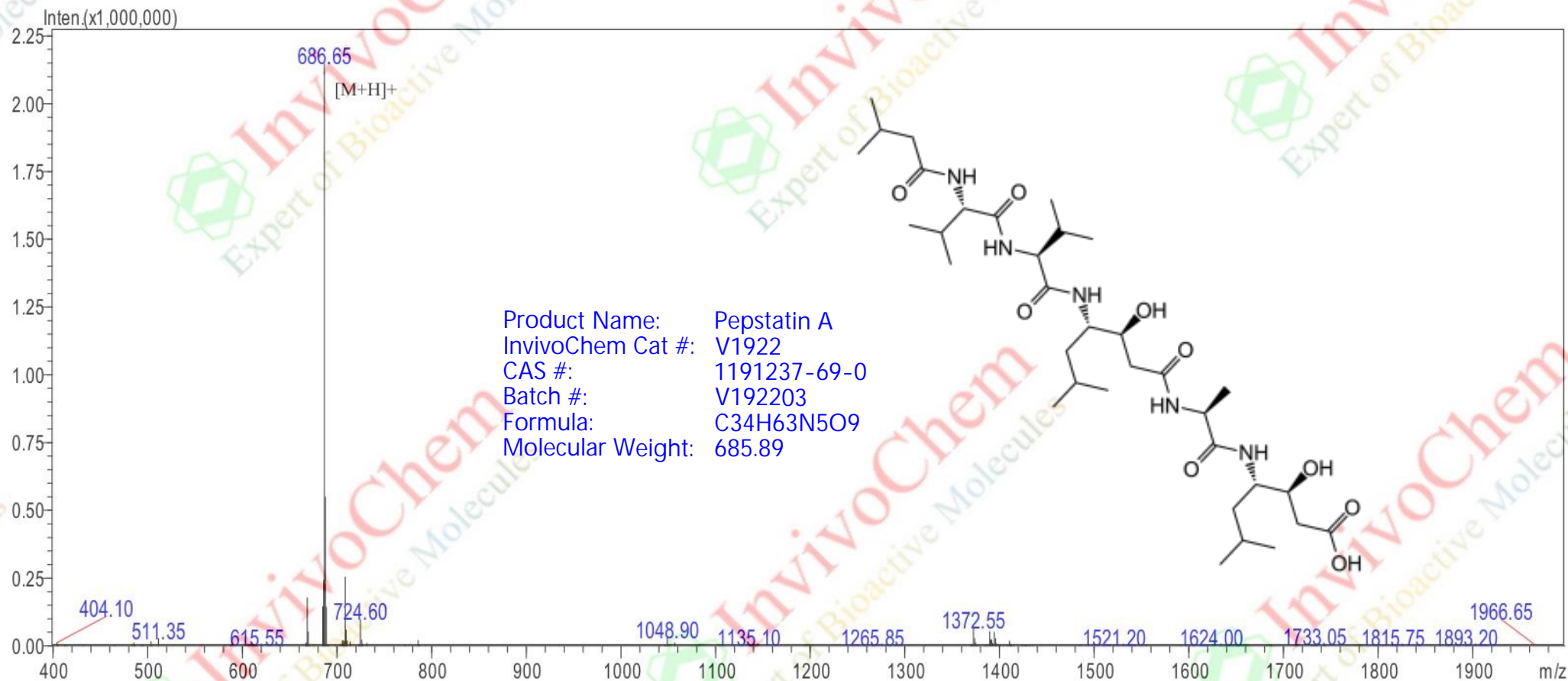


# LCMS Analysis for V192203 Pepstatin A

## MASS SPECTROMETRY REPORT



Sample Description 2023-11-04

Analyzed date:

Analyst: SHAO

Sample: 800070

M.W.: 685.9

Lot. No.:

Instrument SHIMADZU LCMS-2023

Probe: ESI Probe Bias: +4.5kv

Nebulizer Gas Flow: 1.5L/min Detector: 1.5kv

CDL: -20.0v T. Flow: 0.2ml/min

CDL Temp.: 250°C B. Conc.: 50%H<sub>2</sub>O/50%ACN

Block Temp.: 200°C