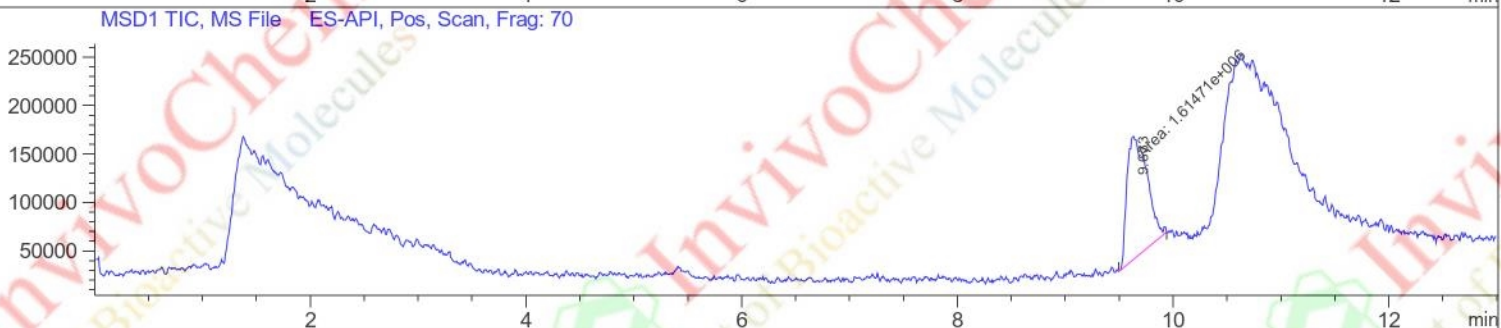
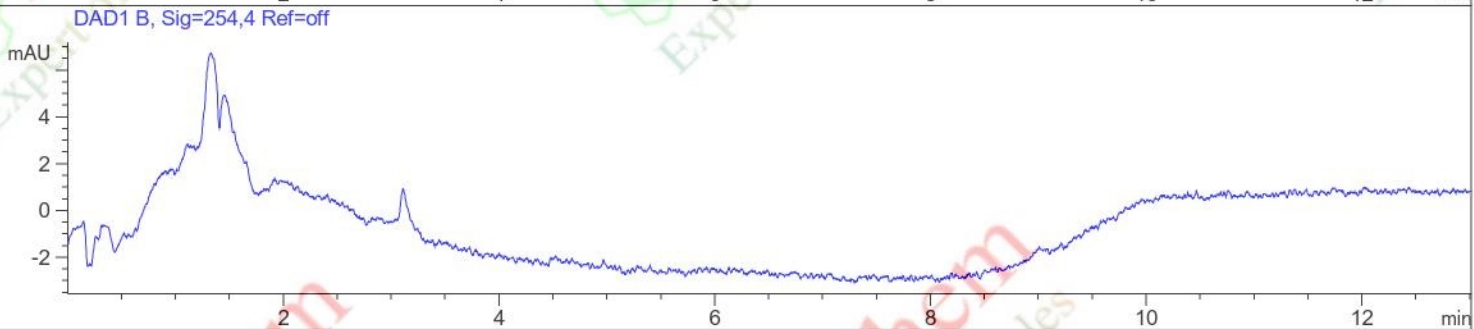
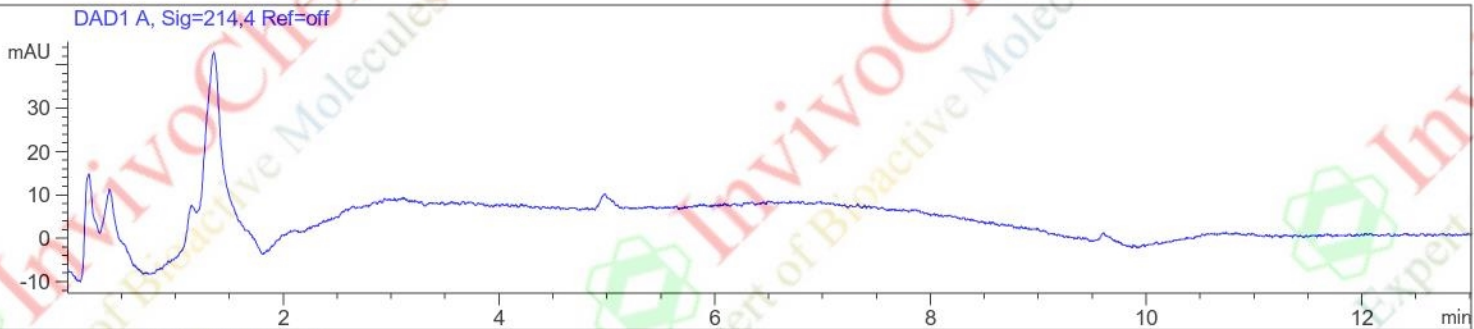


File D:\DATA\CHEMIST\PCL-#-2023DD1155.D
 Injection Date : 25 Oct 23 1:29 pm +0800 Tgt Mass(EZX) :
 Sample Name : PCL-#-2023DD1155-HPLC Location : P2-D-08
 Acq. Operator : J. Chemist Inj : 1
 Spec. Reported : MS Integration Inj Volume : 5 ul
 Acq. Method : D:\METHODS\HPLC.M
 Analysis Method : D:\METHODS\1-POS-4MIN.M
 Sample Info : Easy-Access Method: 'HPLC'
 Method Info : Mobile Phase: A: Water (0.01%TFA) B: ACN (0.01%TFA)
 Gradient: 5%-95% B in 2 min
 Flow Rate: 1.8ml/min
 Column: SunFire C18,4.6*150mm,3.5um
 Column Temperature: 40 °C
 UV: 214&254nm



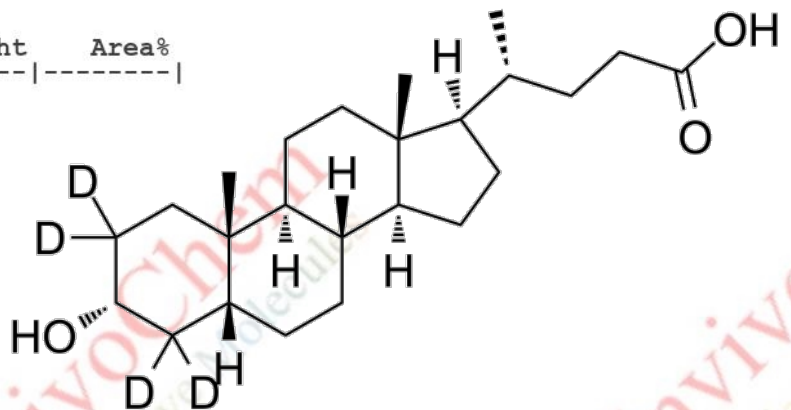
Integration Results for DAD1 A, Sig=214,4 Ref=off

RetTim	Width	Area	Height	Area%
1.647	0.080	1.61471e+006	35	100

Integration Results for DAD1 B, Sig=254,4 Ref=off

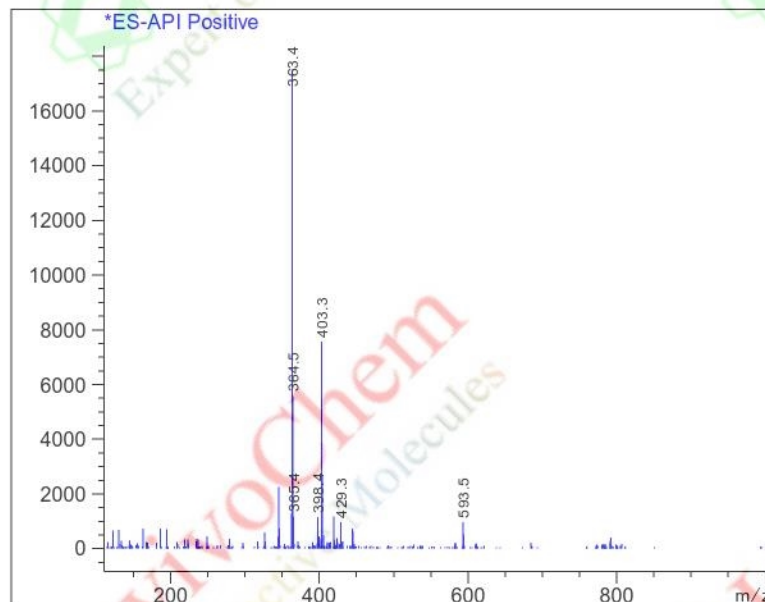
RetTim	Width	Area	Height	Area%
1.647	0.080	1.61471e+006	4	100

Product Name: Lithocholic acid-d4
 InvivoChem Cat #: V34751
 CAS #: 83701-16-0
 Batch #: V3475101
 Formula: C₂₄H₃₆D₄O₃
 Molecular Weight: 380.60



LCMS Analysis for V3475101 Lithocholic acid-d4

Ret. Time: 9.63 <<<< POSITIVE SPECTRA >>>>



Product Name: Lithocholic acid-d4
InvivoChem Cat #: V34751
CAS #: 83701-16-0
Batch #: V3475101
Formula: C₂₄H₃₆D₄O₃
Molecular Weight: 380.60

