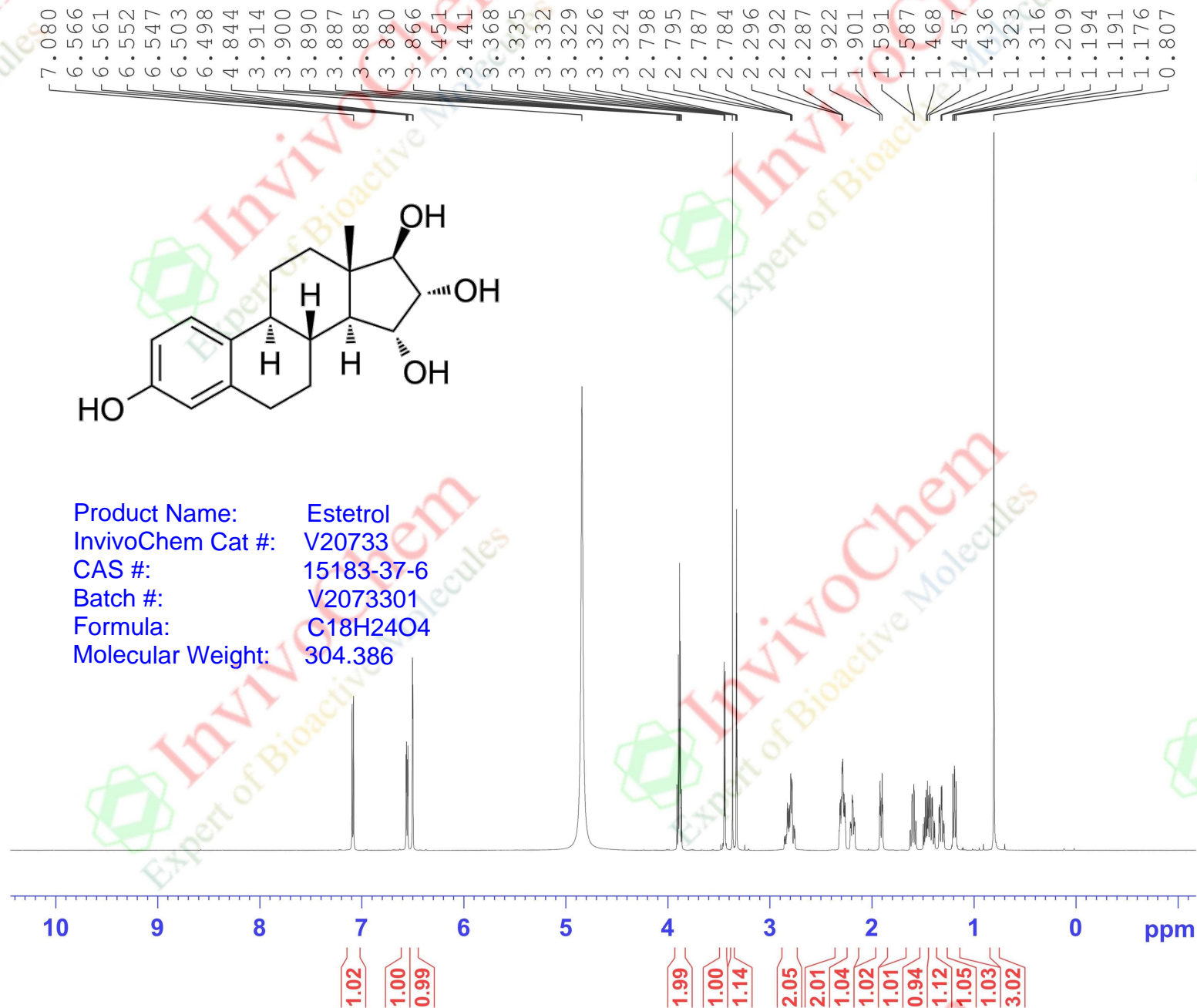


NMR Analysis for V2073301 Estetrol ; Solvent: CD₃OD

NT-S20260226-017

PROTON MeOD {E:\nmr\WFH} root 46



Current Data Parameters
 NAME ESTR-260225
 EXPNO 1
 PROCNO 1

F2 - Acquisition Parameters
 Date_ 20260226
 Time_ 14.45
 INSTRUM spect
 PROBHD 5 mm PABBO BB-
 PULPROG zg30
 TD 65536
 SOLVENT MeOD
 NS 16
 DS 2
 SWH 12019.230 Hz
 FIDRES 0.183399 Hz
 AQ 2.7262976 sec
 RG 128
 DW 41.600 usec
 DE 6.50 usec
 TE 525.2 K
 D1 1.00000000 sec
 TDO 1

==== CHANNEL f1 =====
 SFO1 600.2337067 MHz
 NUC1 1H
 P1 13.30 usec
 PLW1 23.00000000 W

F2 - Processing parameters
 SI 65536
 SF 600.2300000 MHz
 WDW EM
 SSB 0
 LB 0.30 Hz
 GB 0
 PC 1.00

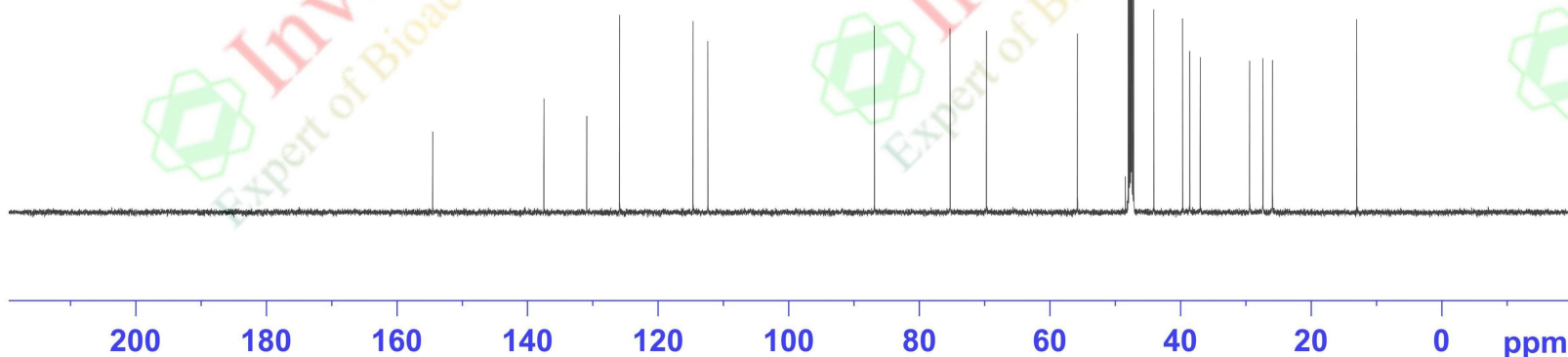
NT-S20260626-017

C13CPD MeOD {E:\nmr\WFH}

Root 46

154.540
137.516
130.95
125.92
114.68
112.41

86.90
75.31
69.74
55.80
48.47
48.18
48.04
47.90
47.76
47.61
47.47
47.33
47.19
44.11
39.72
38.61
37.01
29.44
27.41
25.94
13.05



Current Data Parameters
NAME ESTR-260225
EXPNO 2
PROCNO 1

F2 - Acquisition Parameters
Date_ 20260226
Time_ 15.54
INSTRUM spect
PROBHD 5 mm PABBO BB-
PULPROG zgpg30
TD 65536
SOLVENT MeOD
NS 1024
DS 4
SWH 36057.691 Hz
FIDRES 0.550197 Hz
AQ 0.9087659 sec
RG 203
DW 13.867 usec
DE 6.50 usec
TE 525.8 K
D1 2.0000000 sec
D11 0.0300000 sec
TD0 1

==== CHANNEL f1 =====
SFO1 150.9430456 MHz
NUC1 13C
P1 11.65 usec
PLW1 145.0000000 W

==== CHANNEL f2 =====
SFO2 600.2324009 MHz
NUC2 1H
CPDPRG[2] waltz16
PCPD2 70.00 usec
PLW2 23.0000000 W
PLW12 0.83029997 W
PLW13 0.41762999 W

F2 - Processing parameters
SI 32768
SF 150.9279535 MHz
WDW EM
SSB 0
LB 1.00 Hz
GB 0
PC 1.40