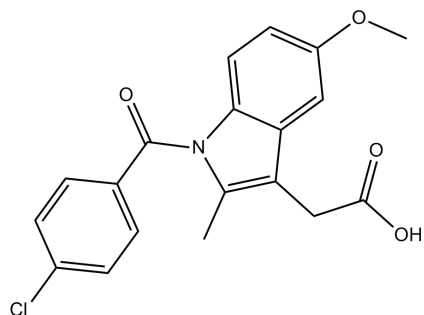


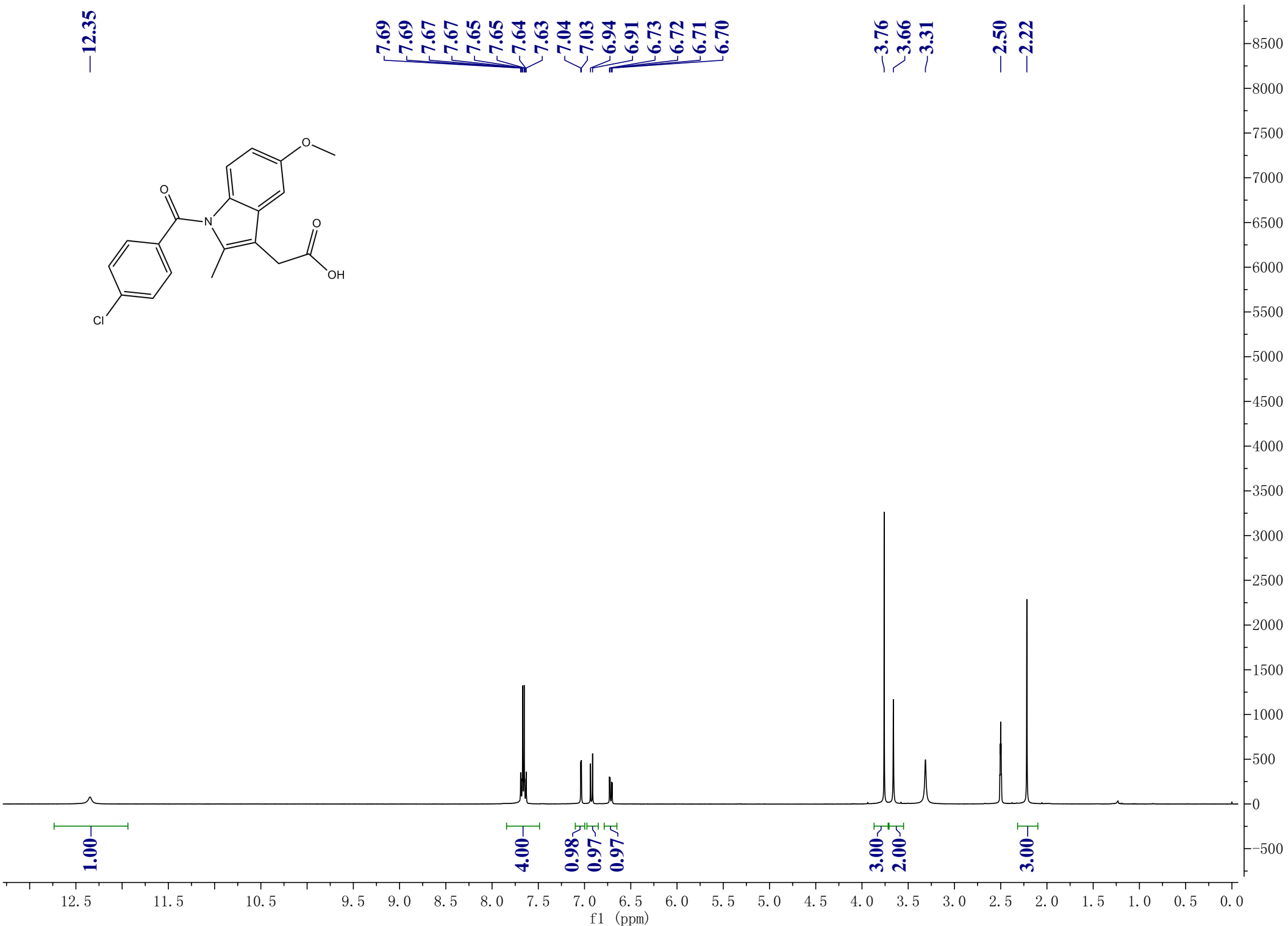
12.35



7.69  
7.69  
7.67  
7.67  
7.65  
7.65  
7.64  
7.63  
7.04  
7.03  
6.94  
6.91  
6.73  
6.72  
6.71  
6.70

3.76  
3.66  
3.31

2.50  
2.22



1.00

4.00

0.98

0.97

0.97

3.00

2.00

3.00

f1 (ppm)