

### Certificate of Analysis

<b>Product Name</b>	Methyl- $\beta$ -cyclodextrin
<b>Catalog No.</b>	V33326
<b>Batch No.</b>	V3332601

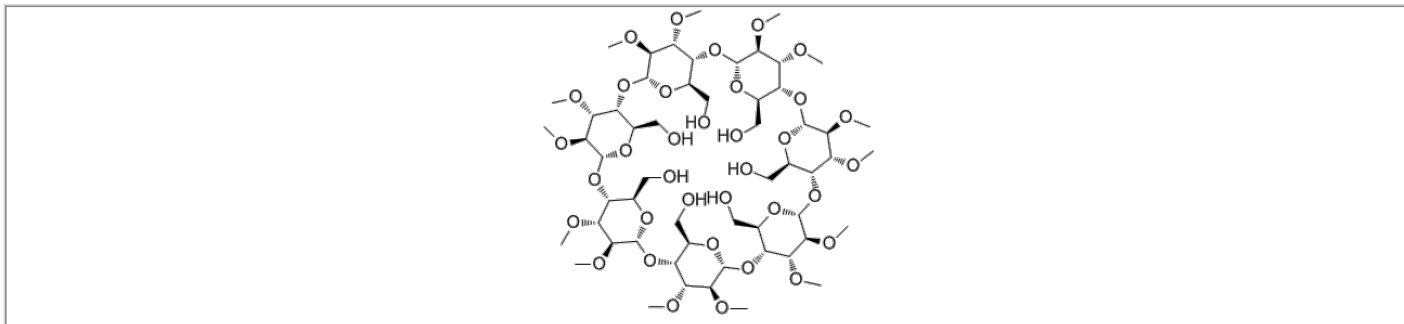
#### 1. Physical and Chemical Properties

<b>Appearance</b>	powder
<b>Molecular Formula</b>	C <sub>54</sub> H <sub>94</sub> O <sub>35</sub>
<b>Molecular Weight</b>	1303.3032
<b>Purity</b>	≥98%
<b>CAS No.</b>	128446-36-6
<b>Production Date</b>	2024-05-10

#### 2. Analytical Data

Test Item	Specification	Result
HPLC	≥98%	≥98%
NMR	Consistent with structure	Confirms
Mass Spectrum	Consistent with structure	Confirms

#### 3. Structure



#### 4. Storage Condition

<b>Storage Condition</b>	Powder	-20°C	3 years
		4°C	2 years
	In solvent	-80°C	6 months
		-20°C	1 month

**Products are for research use only • Not for human or veterinary use**